



FOR SALE

NEST OR INVEST IN CENTRAL LOCATION !

This immaculate and tastefully renovated 3 bedroom house is situated in a quiet street and a very sought after location in Molendinar. The lovely home is positioned on an elevated ground to catch cool breezes and plenty of natural light. Conveniently located close to Griffith University, The Gold Coast University Hospital, Trinity Lutheran College, shops and public transport. Don't miss out!

Features include:

- 3 good sized bedrooms, master with large built-in robe
- Large open plan living and dining leading to outdoor undercover entertaining area
- Chefs kitchen with stone benchtops, island stone benchtops, gas cooktop, stainless steel appliances and plenty of cupboard spaces
- LED downlights throughout
- Security screen to doors and windows
- Family bathroom, separate toilet
- Solar power system approximate 4.0KW
- Split system reverse cycle air conditioning
- Ceiling fans living and all bedrooms
- Abundance storage spaces
- Plenty of natural light and airy
- Single carport plus additional parking spaces
- Move in Ready
- Good side access
- Fully fenced property
- Large garden shed
- Beautifully landscaped gardens
- Low maintenance yard
- 628m2 block.

For information or to inspect, please contact listing agent Anthony on 0404 124284.

Disclaimer: The information contained herein is obtained from owners and/or relevant and legitimate third-party sources. We have, in preparing this information, used our best endeavours to ensure that the information is true and accurate however, we accept no responsibility, offer no

3 BED | 1 BATH | 2 CAR

PRICE:

Expressions of Interest

OPEN FOR INSPECTION:

N/A

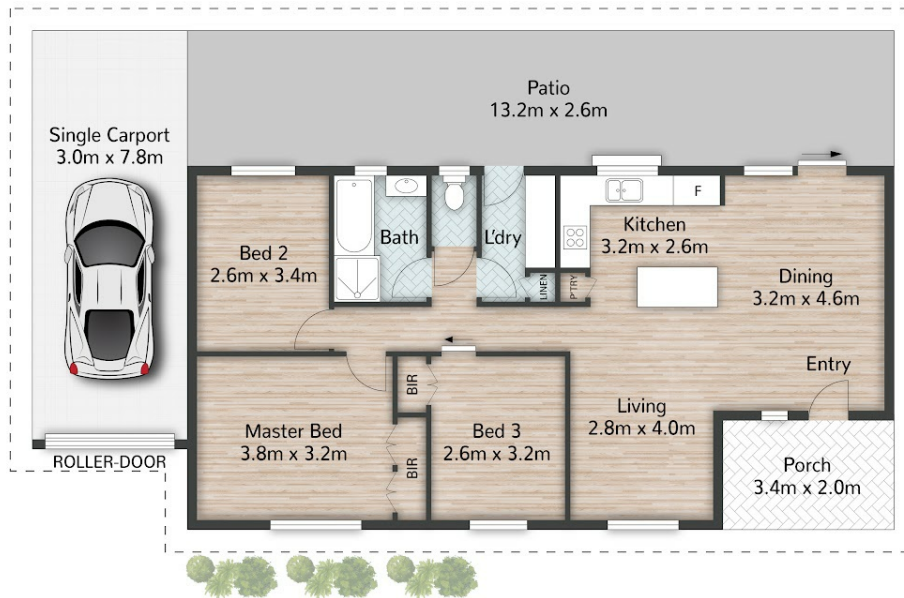
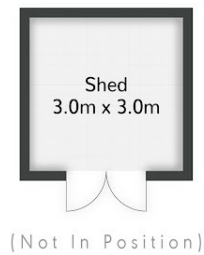


Anthony Teo

0404124284

anthony.teo@atrealty.com.au

www.atrealty.com.au



22 Bloodwood Crescent **MOLENDINAR**

3 | 1 | 1 | 162m² | 628m²

All dimensions are approximate; they are subject to errors and inaccuracies and no liability will be accepted. Plans are shown for marketing purposes only.

Disclaimer: Please note this floor plan is for marketing purposes and is to be used as a guide only. All dimensions are estimates only and may not be exact measurements.