

# FOR SALE

## QUARTER ACRE WATERFRONT WITH STUNNING PANORAMIC 270 DEGREE OCEAN VIEWS

STYLISH DOUBLE STOREY OFFERING DUAL LIVING POTENTIAL AND SIDE ACCESS

Located in a picturesque setting with waves gently lapping at the shore and offering uninterrupted bay views stretching for miles, this property represents a fantastic opportunity to buy into one of the most exclusive pockets in Redland Bay. Zoned comprehensive development, this quarter acre of real estate gold is a real prize, with the potential to build up to six storeys (STCA). (there is also the chance of something more (please call Gok on 0435 654 672 to discuss))

Auster street is part of the Weinam creek PDA and is home to an apartment complex successfully built recently, delivering a great return. Located near the marina, a whole host of amenities have been recently built and opened - new hospital, new schools, shops including Woolworths and multi residential apartments. Redland Bay is surging with new amenities and recently approved developments, and is centrally located 45 minutes from both Brisbane city and the Gold Coast.

This area will also be the venue for some of the Olympic events and is home to the 2.3 Billion dollar master plan currently underway (Shoreline) and also an Industrial area (Redland bay business park) in the latter stages of development, whose sites have been in high demand.

All the right elements exist with this opportunity: zoning, infrastructure upgrade, population growth, precedence & evidence of successful development in the area and on this very street, not to mention a stunning location with uninterrupted bay/island views.

The House itself:

A stylish, versatile home; 5 bedrooms / 4 bathrooms (including 3 ensuites), with separate wings and multiple living and entertainment areas making it ideal for dual living and extended families or running a home business. You can renovate and modernize the house or just

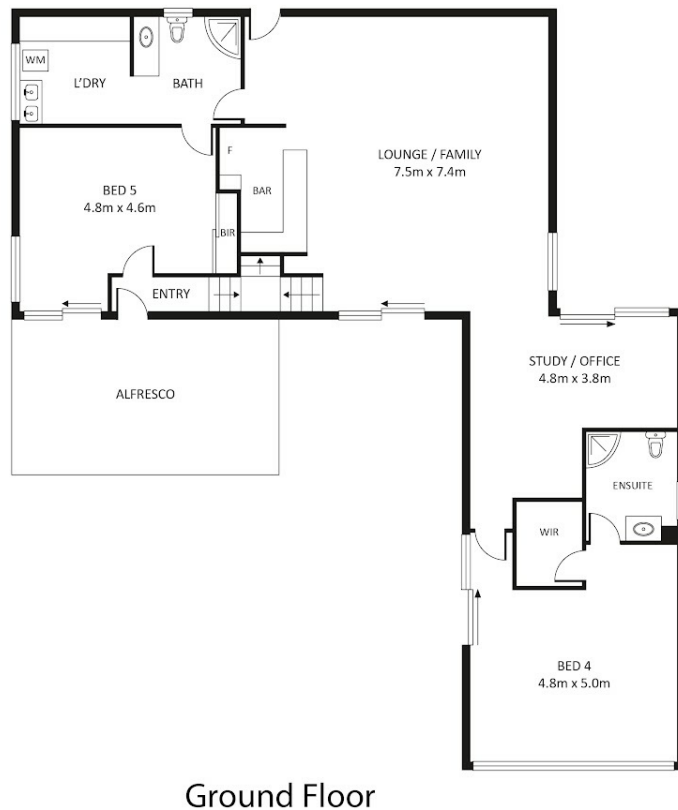
5 BED | 4 BATH | 4 CAR

PRICE:  
CONTACT AGENT

OPEN FOR INSPECTION:  
N/A



**Gok Siva**  
**0435654672**  
gok@atrealty.com.au  
[www.atrealty.com.au](http://www.atrealty.com.au)



Disclaimer: Floor plan measurements are approximate and for illustrative purposes only.

Disclaimer: Please note this floor plan is for marketing purposes and is to be used as a guide only. All dimensions are estimates only and may not be exact measurements.