



FOR SALE

BURSTING WITH POTENTIAL - WHSZ

Sitting proudly on a huge 764m2 block with a generous 25.3m frontage, this well-positioned 70's inspired home offers a thoughtfully designed layout featuring three comfortable bedrooms and two well-appointed bathrooms, including open plan living spaces providing ample room for family living and entertaining.

With its combination of space, location, and potential, this property presents an exciting opportunity for families looking to establish themselves in this highly desired area.

FEATURES INCLUDE:

- Master bedroom with walk-in robe, ensuite (original 70's decor)
- Bedrooms 2 & 3 double size, one with BIR's
- Large family bathroom with separate bath & shower
- Huge laundry with door to back yard
- Sunken lounge room with plenty of natural light, looking out to the front of the property
- Separate allocated dining room - would make a terrific study/office/playroom
- Huge open plan kitchen to family/dining - gas cooking, retro copper rangehood & feature wall tiles, wall oven
- Games room located next to family/dining room leading out to alfresco
- Wide hallway with linen cupboard
- Large windows throughout, ceiling fans
- Bonus storeroom
- RCD & Smoke detector compliant
- Bore reticulation (lawns have had lots of TLC to regenerate)
- Built 1972
- Green Title block 764.9m2 with 25.3m frontage x 30.2 depth
- Council Rates: \$2,247 (FY 2023/24) approx
- Water Rates: \$1,305 (FY 2023/24) approx
- Willetton & Leeming High School dual zone, Bull Creek Primary School, minutes to All Saints College

If you're looking to acquire a large & affordable home in Bull Creek this one's very livable while you renovate to create your dream home. - We love the floor plan, multiple living rooms, big master suite, generous size bathrooms, large windows throughout, great block size!

3 BED | 2 BATH | 1 CAR

PRICE:

UNDER OFFER BY JILL GROVES

OPEN FOR INSPECTION:

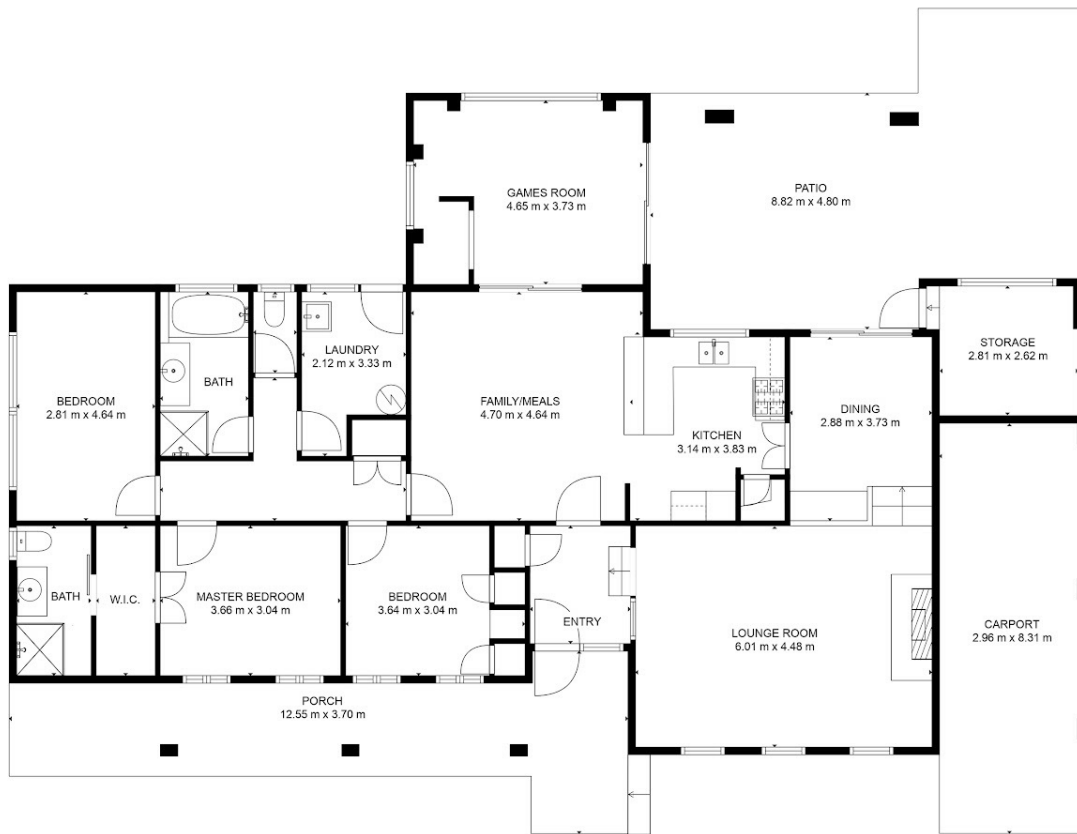
N/A



Jill Groves
0408765240

jillgroves@atrealty.com.au

www.atrealty.com.au



@realty 30 Bass Road, Bull Creek

Not to scale • All measurements are approximate • Drawn for presentation purposes only

Disclaimer: Please note this floor plan is for marketing purposes and is to be used as a guide only. All dimensions are estimates only and may not be exact measurements.