



**SOLD**

## CHARMING FAMILY HOME ON 1.53HA

This very spacious charming weatherboard home, is located in Allgomera, near Paddy's Rest and boasts everything you could ever want and more. From the moment you step onto the 1.53ha / approx. 3.78acres of land you will be captivated by the serenity on offer.

As you approach the home, you will be struck by the impressive deck and expansive sunroom that wraps around the entire home. Imagine sitting out here, sipping your morning coffee, and taking in the breath-taking views of the surrounding countryside. This is just the beginning of what this property has to offer.

Step inside and be awestruck by the spacious size and open layout of this three bedroom, two bathroom home, with large sunroom that could easily be transformed into a 4th bedroom. The master bedroom features a ensuite, and with built-in wardrobes in all four oversized bedrooms, you will have plenty of storage space for all your belongings.

The indoor features of this house are sure to impress. The beautiful floorboards add a touch of elegance and warmth to the home, while the rumpus room provides a perfect space for entertaining guests or for the kids to play.

The built-in workshop is a handy addition for any DIY projects or hobbies you may have.

But the true highlight of this property is the outdoor space. The property is fully fenced, has 3 water tanks, an adjoining paddock complete with a dam, the idea set up for 1 to 2 horses and a four bay multi-use machinery shed for secure parking of your vehicles, there is no shortage of space for all your outdoor needs.

Contact Jennifer on 0409 765 032 today to schedule a viewing and experience the magic of this property for yourself. You won't be disappointed.

**3 BED | 2 BATH | 4 CAR**

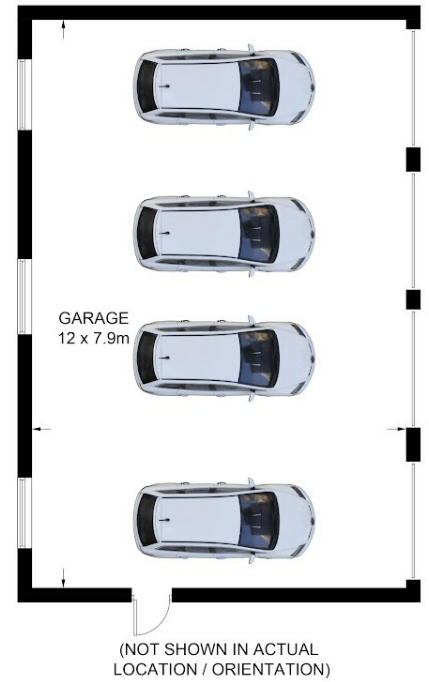
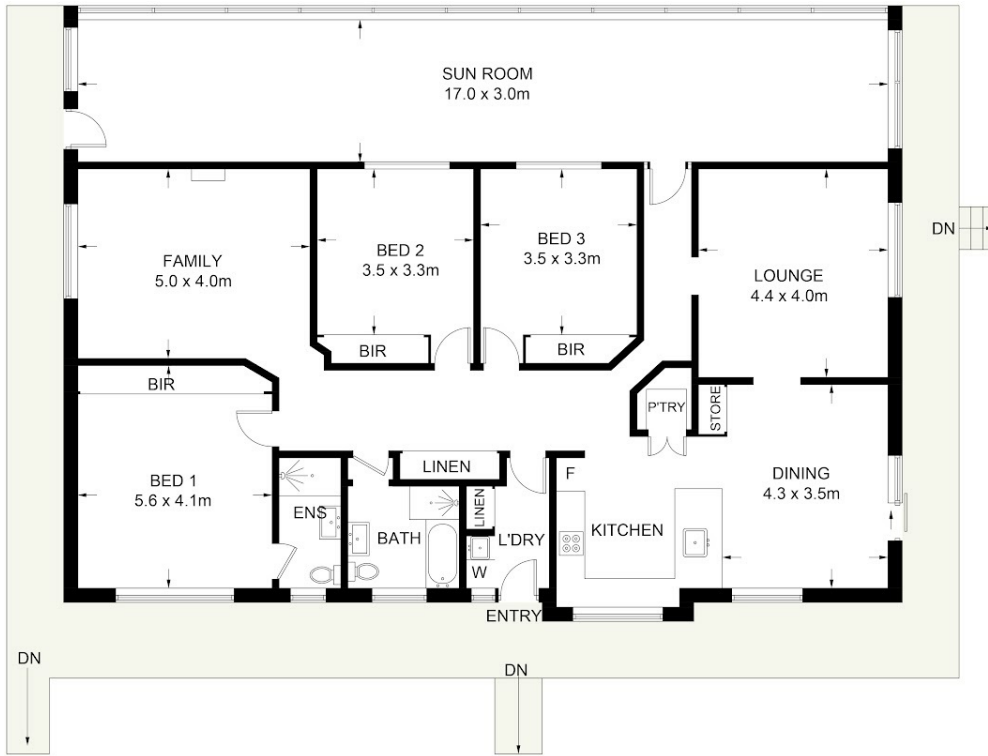
**PRICE:**  
**\$878,000**

**OPEN FOR INSPECTION:**  
**N/A**



**Jennifer Miller**  
**0409765032**  
jmiller@atrealty.com.au  
[www.atrealty.com.au](http://www.atrealty.com.au)

Approximate Gross Internal Area = 206.6 sq m  
Garage = 94.9 sq m  
Total = 301.5 sq m  
External Area = 64.8 sq m



## 71 Allgomera Road, Allgomera, NSW 2441

DISCLAIMER: PLANS SHOWN ARE FOR PRESENTATION PURPOSES AND ARE NOT PART OF ANY LEGAL DOCUMENT. ALL MEASUREMENTS AND FIGURES ARE APPROXIMATE.

Disclaimer: Please note this floor plan is for marketing purposes and is to be used as a guide only. All dimensions are estimates only and may not be exact measurements.