

**SOLD**

**ANOTHER SOLD BY YOUR LOCAL EXPERTS  
SANDEEP & ASHISH . LOOKING TO SELL GIVE  
US A CALL !!**

This beautifully designed home seamlessly combines style, practicality, and luxury, offering an intelligently crafted layout and a contemporary color palette that will captivate at every corner. The bold, modern facade makes an unforgettable first impression, while the soaring 2.7-meter-high ceilings create an open and airy atmosphere throughout the home.

As you step inside, you're welcomed by an high entrance with door, leading to a Master Bedroom is a true sanctuary, featuring a walk-in robe and a stylish ensuite with an extended shower, double vanity, and stone benchtops—offering a touch of elegance to your daily routine.

The heart of the home is the spacious open-plan kitchen, dining, and living area, designed for seamless indoor-outdoor living. The kitchen is a chef's dream, with a stone benchtop, 900mm gas stove, oven, and dishwasher for ultimate convenience. A butler's pantry provides additional storage and functionality for all your culinary needs.

Every detail has been carefully considered, from the sleek tapware to the premium fixtures, ensuring a refined finish throughout the home. Custom tiles grace the bathrooms and common areas, while built-in robes in the three additional bedrooms maximize storage and help maintain an organized, clutter-free environment. High internal doors add an extra layer of luxury and sophistication throughout.

Stay comfortable year-round with evaporative cooling and gas heating. Designer lighting and LED downlights create a warm and inviting ambiance, while the double-car garage offers ample parking, with side access providing secure parking for boats, caravans, or extra vehicles.

Perfectly situated within walking distance to Riverwalk Primary School, Riverwalk Water Park, and the upcoming Riverwalk Town Centre, this home is also close to Werribee Secondary School, Mackillop College, childcare services, public transport, and Werribee Train Station, offering easy access to the Melbourne CBD and Geelong via the freeway. Nearby cafes, restaurants, and public transport make it a truly connected location, bringing vibrant city life to your doorstep.

**4 BED | 2 BATH | 2 CAR**

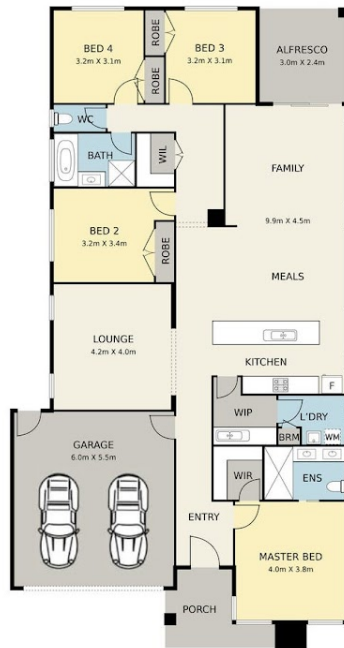
**PRICE:  
\$768,000**

**OPEN FOR INSPECTION:  
N/A**



**Sandeep Bhangu  
0432549151**

**sandeep@localpropertyexperts.com.au  
localpropertyexperts.com.au**



105 Tulsi Avenue, Werribee

DISCLAIMER  
 DIMENSIONS ARE APPROXIMATE AND SUBJECT TO SURVEY AND APPROVALS. ALL DIMENSIONS ARE APPROXIMATE AND NOT TO SCALE. THEY ARE SUBJECT TO SURVEY AND APPROVALS. ANY INACCURACIES AND/OR OMISSIONS WILL BE THE RESPONSIBILITY OF THE CLIENT. LOCAL PROPERTY EXPERTS WILL BE RESPONSIBLE FOR THE ACCURACY OF THE INFORMATION PROVIDED.

Disclaimer: Please note this floor plan is for marketing purposes and is to be used as a guide only. All dimensions are estimates only and may not be exact measurements.