



# FOR SALE

**SOLD!! SECURE THE BEST PRICE WITH LOCAL EXPERTS SANDEEP & ABHI. CONTACT US TO SELL YOUR HOME!**

This architecturally designed home features a meticulously crafted floor plan and a modern colour scheme that will surely impress. Its contemporary facade stands as a testament to style and sophistication, making a memorable first impression on visitors. Inside, the 2.7-meter-high ceilings elevate the sense of grandeur and space throughout the home.

The luxurious Master Bedroom offers a walk-in robe and an ensuite bathroom, complete with a twin shower, designer mirror and a 40mm stone benchtop that adds a touch of elegance to your daily routine.

The heart of the home is the open-plan kitchen, dining, and living area, thoughtfully designed for seamless indoor-outdoor living. The kitchen is a chef's dream, featuring a waterfall stone benchtop, along with a Westinghouse gas stove, oven, and dishwasher for added convenience. A Butler's pantry provides additional storage and functionality. For entertaining, a fully functional bar is perfect for hosting gatherings and creating lasting memories.

Every detail in this home has been carefully considered, from the stylish black tapware to the upgraded nylon carpet, ensuring a luxurious and high-quality finish. Italian tiles bring a touch of sophistication to the bathrooms and common areas, while the sliding mirror robes in the three additional bedrooms offer ample storage and help maintain a clutter-free environment. The 2340mm high internal doors add an extra layer of grandeur to each room.

Stay comfortable throughout the year with the Evaporative cooling system and gas heating. Designer lighting and LED downlights throughout the property create a warm and inviting ambiance. Parking is easy with the double car garage.

Walking Distance to Riverwalk Primary School, Riverwalk Water Park, and of course the future Riverwalk Town Centre, Close proximity to Werribee secondary school, Mackillop College, Childcare, public transport, Werribee Train Station this home offers easy commuting to Melbourne CBD, Geelong with an easy access from freeway. Enjoy the convenience of nearby cafes, restaurants, and public transport, ensuring you are always connected to the vibrant city

**4 BED | 2 BATH | 2 CAR**

**PRICE:**  
**\$740,000 - \$770,000**

**OPEN FOR INSPECTION:**  
**N/A**

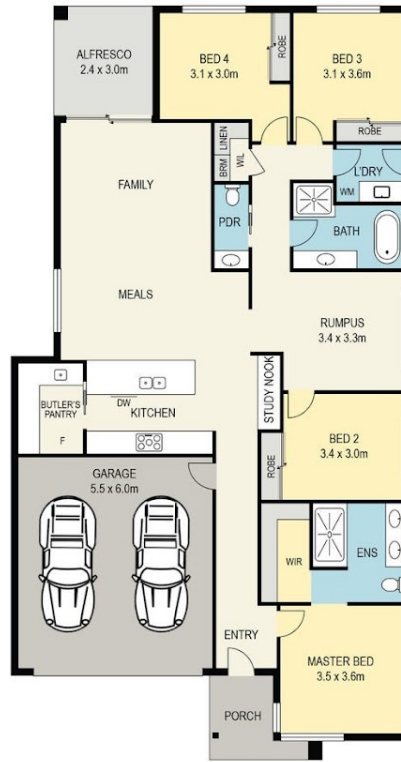


**Sandeep Bhangu**

**0432549151**

[sandeep@localpropertyexperts.com.au](mailto:sandeep@localpropertyexperts.com.au)

[localpropertyexperts.com.au](http://localpropertyexperts.com.au)



DISCLAIMER  
 PLANS SHOWN ARE FOR MARKETING PURPOSES ONLY. ALL DIMENSIONS ARE APPROXIMATE AND NOT TO SCALE. THEY ARE SUBJECT TO ERROR AND INACCURACIES AND NO LIABILITY WILL BE ACCEPTED. INTERESTED PARTIES SHOULD MAKE THEIR OWN INQUIRIES.

Disclaimer: Please note this floor plan is for marketing purposes and is to be used as a guide only. All dimensions are estimates only and may not be exact measurements.