

36 SANDLEHEATH ROAD, ELIZABETH GROVE, SA, 5112



SOLD

SPACIOUS HOME ON APPROX 919SQM AND WIDE 20M FRONTAGE

Nestled in a prime location, this exceptional redevelopment opportunity spans approximately 919 square meters and boasts a wide 20m frontage, offering abundant space for your creative vision to come to life. The expansive property features a four-bedroom house with a wealth of potential.

Property Highlights

- 919sqm (approx.) of prime land
- Four generously sized bedrooms
- Bright and spacious living area
- Ducted cooling throughout the home
- Undercover parking
- Fully fenced rear yard
- Excellent location, close to all amenities

Interior Features

The home comprises a bright living area, kitchen with an adjacent meals area, renovated bathroom, 4 bedrooms, ducted cooling and reverse cycle AC, carport, shed, rear verandah and a fully fenced rear yard.

Redevelopment Potential Subject to Consents

With its ample size and strategic location, this property presents a myriad of redevelopment possibilities. Whether you envision expanding the existing home, building a new modern residence, or even developing multiple dwellings (subject to council approval), the options are vast and promising.

Don't miss out on this rare opportunity to create something truly special on this expansive allotment. Whether you're an investor, developer, or looking for a new home with potential, this property is sure to exceed your expectations.

4 BED | 1 BATH | 2 CAR

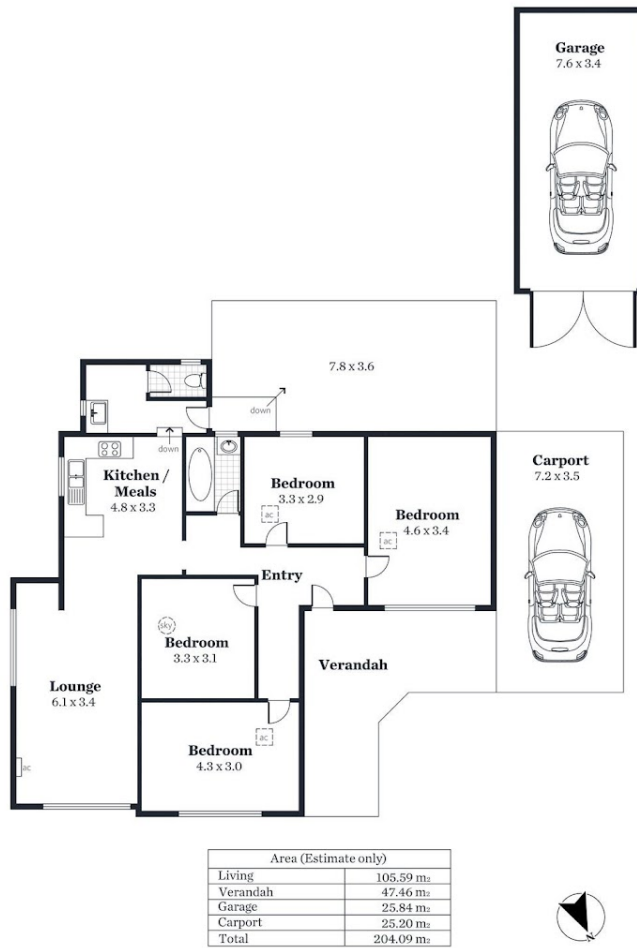
PRICE:
\$640,000

OPEN FOR INSPECTION:
N/A



Andrew Giles
0414696936
gilesproperty@atrealty.com.au
www.atrealty.com.au
RLA: 269823

RLA 269823



Disclaimer: Please note this floor plan is for marketing purposes and is to be used as a guide only. All dimensions are estimates only and may not be exact measurements.