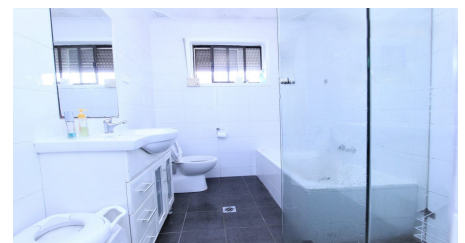
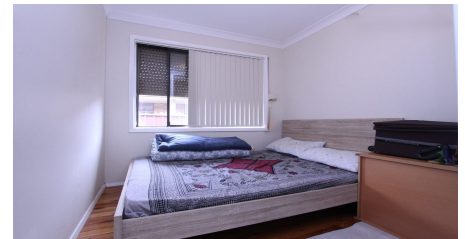


44/37 CURRAWONG STREET,  
INGLEBURN



## FOR LEASE

### IDEAL HOME IN A PRIME LOCATION.

Discover the ideal home in a prime location, Situated in prime location. Just few mins Walk to School, Park and just moments from Ingleburn CBD.

This charming property features:

- 3 bright bedrooms with built in robe.
- A spacious bathroom
- Internal laundry.
- Well maintained low maintenance outdoor area.

Proximity to Amenities: (Approx. 500 m to 1500 m)

- Walk to train station.
- Close to all other amenities.
- Close to local schools.
- Close to Child Care and Parks.

Please Call on 02 8075 2525 for more information.

ONLINE enquiry policy –

All email & online enquiries received from this website will not be attended to if contact number & email address are not provided.

To be able to view the property we require you to register. We also encourage you to complete a T-app application prior to viewing.

APPLY NOW BY ENTERING THIS LINK INTO YOUR BROWSER:

<https://t-app.com.au/propticonnect>

Please note: We do NOT accept 1form application.

Disclaimer:

The information has been furnished to Propti Connect from sources we deem to be

3 | 1 | 2

PRICE:  
Under application



**Rentals Propti Connect**

0280752525

[rentals@propticonnect.com.au](mailto:rentals@propticonnect.com.au)

[propticonnect.com.au](https://propticonnect.com.au)

44/37 CURRAWONG STREET,  
INGLEBURN



ProptiConnect

APPLY NOW BY SCANNING OUR QR  
CODE IN THE PHOTO GALLERY  
OR  
COPY AND PASTE THIS LINK INTO  
YOUR BROWSER:

[t-app.com.au/propticonnect](https://t-app.com.au/propticonnect)

Disclaimer: Whilst every effort has been made to ensure the accuracy of these particulars, no warranty is given by the vendor or the agent as to their accuracy. Interested parties should not rely on these particulars as representations of fact but must instead satisfy themselves by inspection or otherwise.

Rentals Propti Connect | 0280752525 | [rentals@propticonnect.com.au](mailto:rentals@propticonnect.com.au) | [propticonnect.com.au](https://propticonnect.com.au)