

# FOR SALE

6  | 3  | 10 

14 ALAWARA DRIVE, TALLAI, QLD, 4213



**SANDRA LIEBENBERG**  
PROPERTIES GOLD COAST



## TWO HOMES - MASSIVE SHED - ON USABLE ACREAGE

Welcome to this stunning ultra private Dual Living property thoughtfully designed with the generosity of space for multi-generational living or hosting visitors on (approx 7,792m<sup>2</sup>) of park-like grounds in one of Tallai's finest cul-de-sac pockets on the Gold Coast Queensland.

The beauty of this property is instantly evident upon arrival with a carefully curated tree-lined driveway leading to a dual family retreat that rests beautifully with its magnificent surrounds and sets the tone, creating a striking fusion of peace and modern day living. Completed to a generous spec in 2024 and offering the best of modern updates, it's the ultimate opportunity for the astute buyer to enjoy the flaunting crafted dual living design with poolside entertaining that combines all the vital elements for a private family environment. Or, continue the currently operated short term holiday let for a passive income (STCA).

**THE MAIN RESIDENCE:** Perfect for family get-togethers and great for entertaining boasts a seamless indoor-outdoor design drenched in natural light through floor to ceiling glass doors that seamlessly integrates the timeless interior with the expansive outdoor spaces and pool – The stunning chef-inspired kitchen with large island sits at the heart of the home, encouraging daily family interaction in a comfortable space and boasts elegant countertops and top-quality appliances.

Bedrooms are well appointed with built-in robes and ceiling fans whilst the impressive master offers a flexible space for maximum relaxation creating an ambience of warmth and openness.

**THE SECONDARY RESIDENCE:** Equally impressive and sits privately with contrasting modern aesthetics and expansive light-filled living spaces that seamlessly connect to the outdoor deck.

**PRICE:**

**Expressions Of Interest WILL Be Submitted**

**OPEN FOR INSPECTION:**

**May 10 at 10:00am - 10:45am**

# Sandra Liebenberg // 0437081639

sandra@slpropertiesgc.com.au // [www.slpropertiesgc.com.au](http://www.slpropertiesgc.com.au)





# FOR SALE

6  | 3  | 10 

14 ALAWARA DRIVE, TALLAI, QLD, 4213



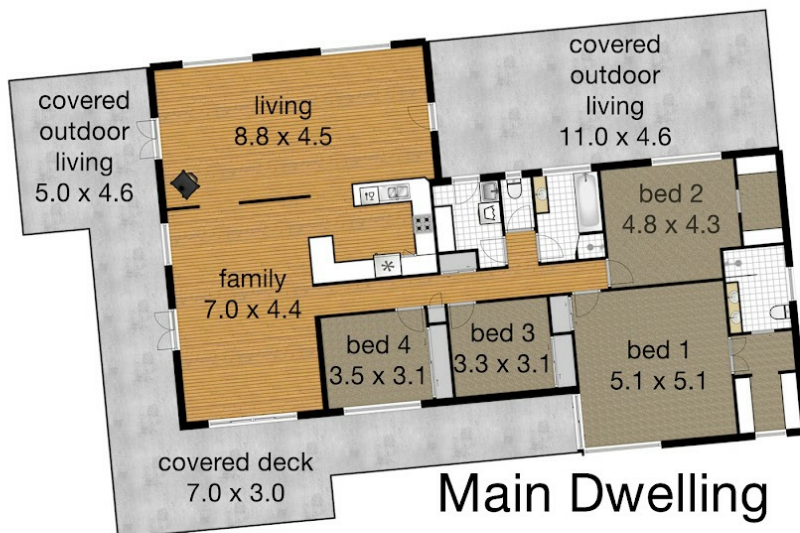
**SANDRA LIEBENBERG**  
PROPERTIES GOLD COAST

## 14 Alawara Drive, TALLAI, 4213

Land 7792m<sup>2</sup>

Main Dwelling - 4 Bedroom - 2 Bathroom - 2 Living  
Floor Area including covered outdoors 305m<sup>2</sup>

Second Dwelling - 2 Bedroom - 1 Bathroom - 2 living - 2 Garage  
Floor Area including covered outdoors 175m<sup>2</sup>



**SANDRA LIEBENBERG**  
PROPERTIES GOLD COAST



Whilst every attempt has been made to ensure the accuracy of the floor plan. Measurements of doors, windows rooms and any other items are approximate and no responsibility is taken for any error, omission or misstatement. This plan is for illustrative purposes only and should be used as such by any prospective purchaser.

**Sandra Liebenberg // 0437081639**

sandra@slpropertiesgc.com.au // [www.slpropertiesgc.com.au](http://www.slpropertiesgc.com.au)