



SOLD

MODERN LIVING IN WESTMEAD'S HEALTHCARE PRECINCT

Property Overview:

- Bedrooms: 2 (Main bedroom with built-ins)
- Bathrooms: 1
- Parking: 1 car
- Total Area: 149 sqm

Enjoy modern, ground floor living in a prime location—within walking distance to the station, schools, local shops (including Coles), hospital, parks, and more. This apartment offers private ramp access from a corner position, ensuring a bright and sunny aspect throughout.

Key Features:

- Open-plan lounge, dining, and kitchen area with reverse cycle air conditioning
- High ceilings accentuated by three-tier cornices
- Floating timber flooring for a sleek, contemporary look
- Modern kitchen equipped with gas appliances, granite benchtops, and polyurethane cabinets
- Enhanced security with video intercom and alarm system
- Lock-up garage
- Adaptable design to suit wheelchair access

Arrange your inspection today!

2 BED | 1 BATH | 1 CAR

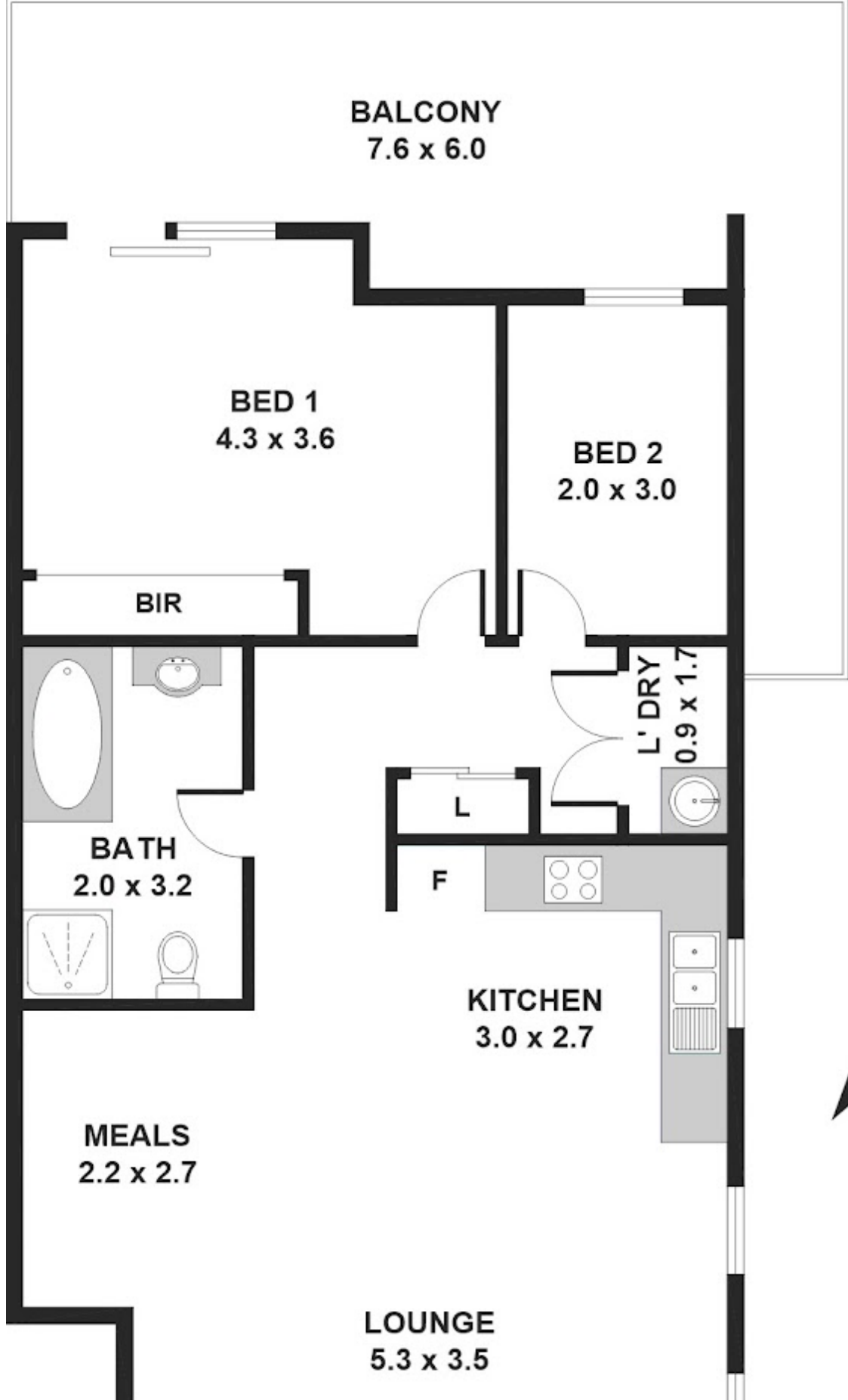
PRICE:
\$570,000

OPEN FOR INSPECTION:
N/A



Leroy Magee
0402963898

leroymagee@hillsestategroup.com.au
hillsestategroup.com.au



Disclaimer: Please note this floor plan is for marketing purposes and is to be used as a guide only. All dimensions are estimates only and may not be exact measurements.

**UNDERCOVER
ENTERTAINING
AREA
5.6 x 5.5**



CAR SPACE

NOT IN CORRECT POSITION

**RAMP
ACCESS**

