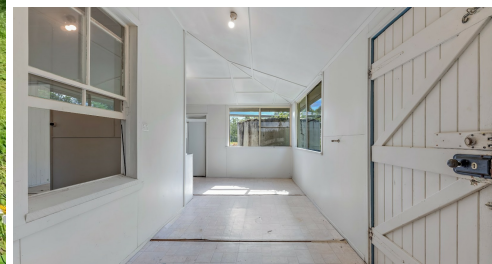


8495 BRUCE HIGHWAY, BLOOMSBURY, QLD, 4799



SOLD

FROM TRACKS TO TRANSFORMATION – A RAILWAY COTTAGE REVIVAL AWAITS!

If these walls could talk, they'd have plenty of stories to tell—from the railway workers who once called it home to the years of history etched into every timber. But the best story? That's the one you'll create when you bring this old beauty back to life.

8495 Bruce Highway, Bloomsbury – located an hour from Mackay and 45 minutes from Airlie Beach, this 617m² block is home to an authentic old railway worker's cottage—a true slice of history just waiting for its next chapter.

With 2 bedrooms, 1 bathroom, and decades of character, this cottage has certainly seen better days. But for those with vision, determination, and a love for a good reno challenge, this is the ultimate "fixer-upper."

Love a project? This home is calling your name!

Rustic charm meets endless potential

Room to create, rebuild, or restore

Prime location—enjoy country serenity with easy access to both city and coast

It's rough, it's raw, and it's ready for revival. Will you be the one to turn the page and bring this railway gem back to life?

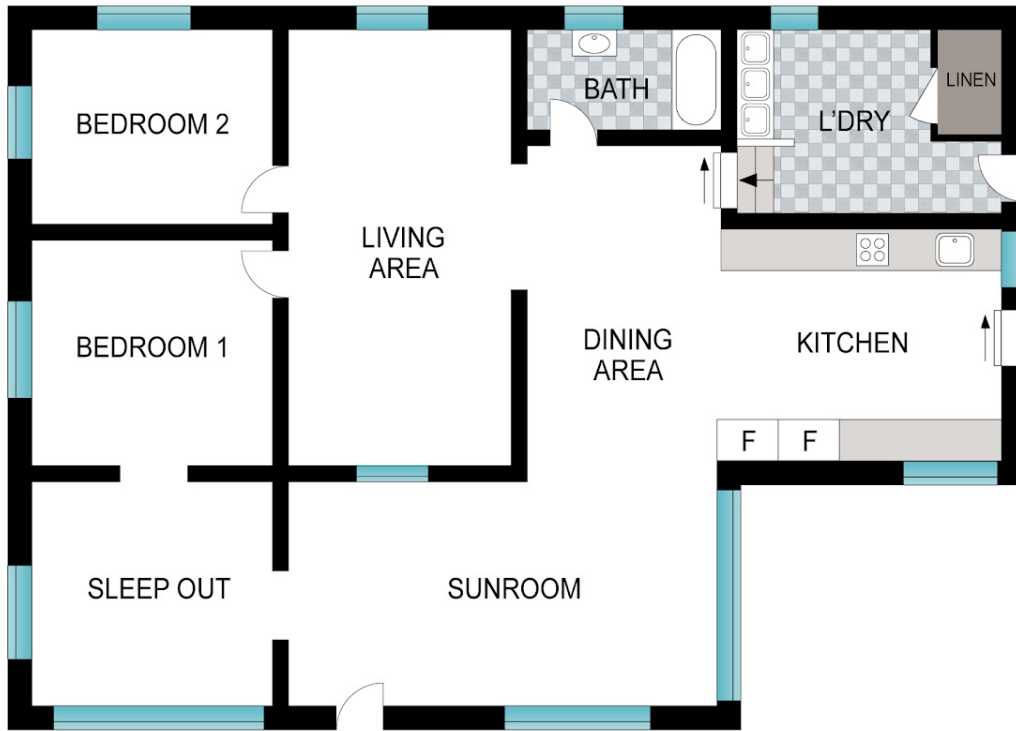
2 BED | 1 BATH | 1 CAR

PRICE:
\$120,000

OPEN FOR INSPECTION:
N/A



Kath Barker
0401809697
kathbarker@atrealty.com.au
www.atrealty.com.au



Scale in metres. Indicative only. Dimensions are approximate. All information contained herein is gathered from sources we believe to be reliable. However, we cannot guarantee its accuracy and interested persons should rely on their own enquiries.

8495 Bruce Highway, Bloomsbury



Disclaimer: Please note this floor plan is for marketing purposes and is to be used as a guide only. All dimensions are estimates only and may not be exact measurements.

Kath Barker
0401809697
 kathbarker@atrealty.com.au
www.atrealty.com.au

