

SOLD

TUCKED AWAY & SURPRISINGLY QUIET!

Welcome to 5/429a Princes Highway, Bomaderry. Light-filled and tucked away from the main road in a secure gated complex is this neat & tidy double storey family home.

Enjoy the tranquil bush setting with a cuppa from the covered patio; utilise the landing area as a study; or take advantage of the abundance of storage options throughout.

Conveniently located close to schools and shopping, this low maintenance home presents as a perfect opportunity to enter the property market or as a solid investment choice.

Featuring:

- Two bedrooms upstairs, both with BIW's
- Main bathroom on the upper level with an additional WC downstairs
- Two enclosed courtyards at the front & rear of the property, perfect for entertaining
- Open plan design, suitable for family life
- Well-appointed kitchen with a dishwasher, Westinghouse oven & generous storage space
- Single remote LUG with internal access & ample roof space to install mezzanine storage
- Gas hot water/cooking
- 6 visitor car spots
- NBN

Council rates: \$308pq approx
Water rates: \$293pq approx (+ usage)
Annual strata: \$530pq
Expected rental yield: \$430-\$450/week

Disclaimer:

All information contained in our marketing material is gathered from sources deemed to be reliable. However, we cannot guarantee its accuracy and therefore assume no legal liability in relation to the information provided. Any interested parties to the property should conduct their own due diligence before proceeding.

2 BED | 1 BATH | 1 CAR

PRICE:
\$535,000

OPEN FOR INSPECTION:
N/A



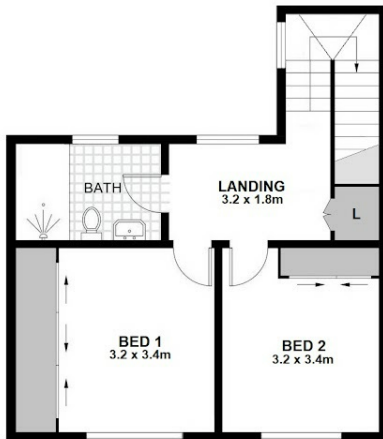
Chanelle Rosebrock
0417269314

chanelle.rosebrock@atrealty.com.au
www.atrealty.com.au




GROUND FLOOR



SECOND FLOOR



Unit 5 / 429a Princes H'way BOMADERRY

 1
  1
  2

Scale is in Metres & indicative only & dimensions are only approximate.
 The information contained & gathered herein is we believe from sources to be reliable.
 We can not guarantee it's accuracy & persons should rely on their own enquiries.



Disclaimer: Please note this floor plan is for marketing purposes and is to be used as a guide only. All dimensions are estimates only and may not be exact measurements.

