



FOR SALE

STUNNING DESIGNER APARTMENT , 1 MIN WALK TO STATION, WOOLWORTHS AND SHOPS IN COMPLEX, 2 KM TO PARRAMATTA ,

Located in the heart of Granville Place, this luxurious 2-bedroom apartment offers very comfortable living surrounded by cafes, supermarkets (Woolworths downstairs), transport and the whole Granville commercial precinct. Known for its modern design and premium living, Granville Place provides the perfect balance of comfort and style.

Beautiful architecture rises above a dynamic new family-friendly neighbourhood; a whole new urban village a stone's throw away from Parramatta, Sydney's second CBD, with the new retail precinct. Granville Place shopping centre will be the new heartbeat of the community buzzing with a major supermarket, medical centre and childcare centre, alfresco cafes, iconic restaurants, and retail stores, etc.

Located 1 min walk to Granville Train Station, 2 train stop to Parramatta CBD.

Key features:

- Two generously sized bedrooms, both with built-in wardrobes. The main bedroom features a spacious ensuite.
- Stunning bathroom with modern, premium fixtures.
- Open-plan living and dining area with direct balcony access, ideal for entertaining or relaxation.
- Timber flooring throughout, adding warmth and style to the entire apartment.
- Stylish kitchen with gas cooking, stone bench-top, and Fischer and Paykel appliances.
- Ducted cooling for year-round comfort.
- Access to the exclusive Skygarden, featuring grassy lawns, outdoor lounging areas, BBQ spots, and playgrounds.
- Secure apartment with a designated car space and storage cage

This designer apartment is very very well maintained and in a very central and convenient location , call me today to discuss!

Rental Appraisal : \$750 per week

Call : 0426425839

2 BED | 2 BATH | 1 CAR

PRICE:
\$629,000

OPEN FOR INSPECTION:
N/A

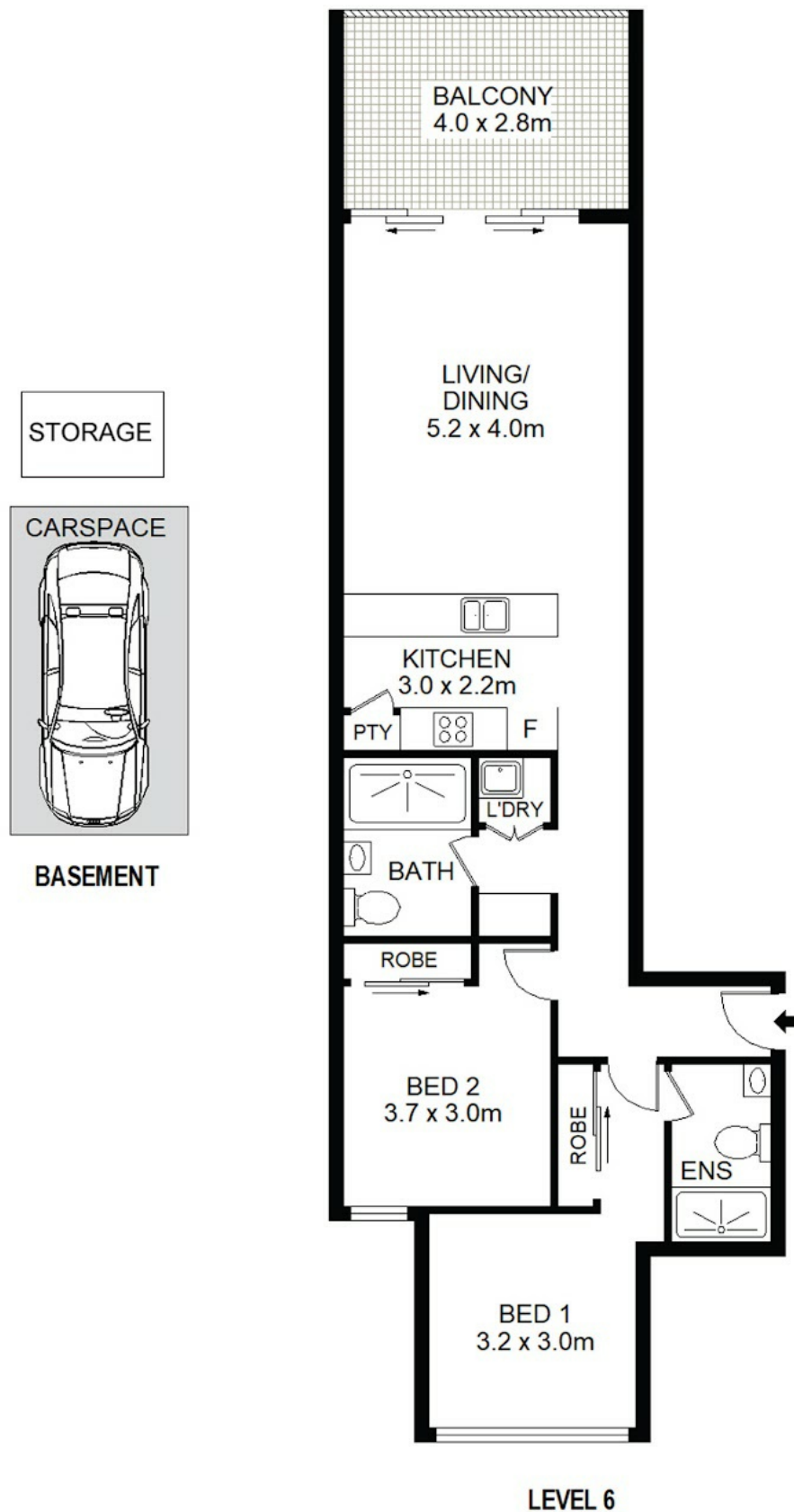


Vivek Uppal

0426425839

vivekuppal@atrealty.com.au

www.atrealty.com.au



Disclaimer: Please note this floor plan is for marketing purposes and is to be used as a guide only. All dimensions are estimates only and may not be exact measurements.

A605/28 Cowper Street Granville

VIVEK UPPAL @realty

DISCLAIMER: DIMENSIONS ARE APPROXIMATE AND SHOULD ONLY BE USED AS A GUIDE. THEY ARE NOT TO SCALE AND NO LIABILITY BE ACCEPTED.

vivekuppal@atrealty.com.au

www.atrealty.com.au