



SOLD

BURPENGARY'S SMARTEST BUY: WALK TO EVERYTHING, MOVE-IN READY TOWNHOUSE IN A HIGH-GROWTH LOCATION... INSTANT VALUE!

Top Features!

1. Private Courtyard – Perfect for entertaining with a small garden
2. Walk to Everything – Shops, schools & train station at your doorstep
3. Move-In Ready or Invest – Low body corp & strong growth opportunity

This 3-bedroom, 2-bathroom townhouse in the heart of Burpengary is the perfect blend of convenience, comfort, and investment potential. Whether you're a first-home buyer, downsizer, or savvy investor, this well-maintained home offers low-maintenance living in a prime location. Opportunities like this don't last long—secure your inspection today.

Welcome to 2/2 Station Road, Burpengary.

Step inside and feel right at home! With its light-filled open-plan living, seamless indoor-outdoor flow, and inviting private courtyard, this townhouse is designed for easy living and relaxed entertaining. Whether you're enjoying a morning coffee on the front porch, hosting friends in your spacious outdoor area, or unwinding in your own peaceful retreat, this home is all about lifestyle and convenience.

Located just moments from shops, cafes, schools, and public transport, everything you need is right at your doorstep—making everyday living effortless. Nestled in a friendly, well-kept complex, it offers the perfect balance of privacy, community, and accessibility to enjoy everything Burpengary has to offer.

Property Features:

- 3 spacious bedrooms with built-in wardrobes & ceiling fans
- 2 bathrooms, including an ensuite to the master
- Open-plan living, dining & kitchen leading to a private courtyard

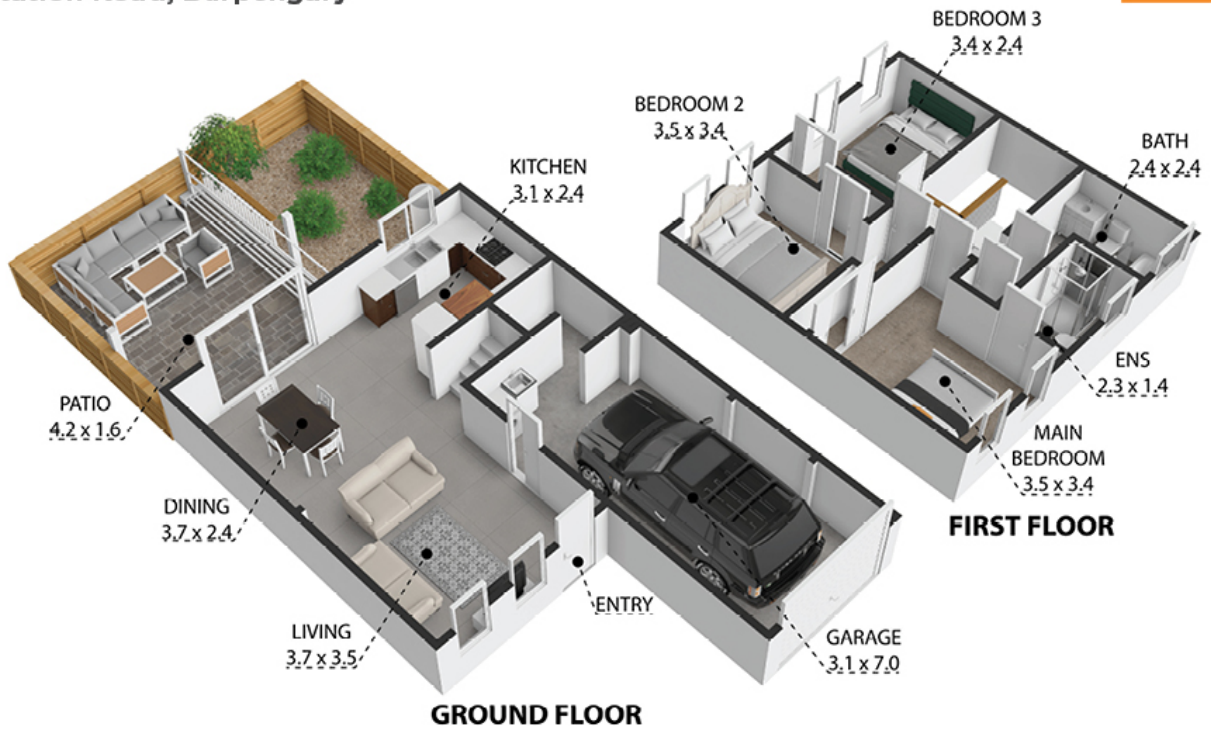
3 BED | 2 BATH | 1 CAR

PRICE:
\$536,000

OPEN FOR INSPECTION:
N/A



Tom Boyle
0414382312
ruproperty@atrealty.com.au
www.atrealty.com.au



Floor plan, measurements and dimensions are approximate and are for illustrative purposes only. RU Property gives no guarantee, warranty or representation as to the accuracy and completeness of the floor plan.

Disclaimer: Please note this floor plan is for marketing purposes and is to be used as a guide only. All dimensions are estimates only and may not be exact measurements.