



FOR SALE

SPLIT LEVEL STUNNER WITH 5 BEDROOMS + STUDY AND ALL THE LUXURIES!

Discover coastal living at its finest in this impressive 5 bedroom family haven, perfectly positioned in the sought-after suburb of Redland Bay. Just 35 kilometers from Brisbane's CBD, this remarkable residence sits on a generous 708m² block, offering the perfect blend of space, style, and sophisticated living.

Property Features: 16 Cypress Street, Redland Bay, QLD

Bedrooms: 5 spacious bedrooms, offering ample accommodation for family and guests.

Bathrooms: 2 well-appointed bathrooms, designed for comfort and convenience.

Car Spaces: 2-car garage, providing secure parking and additional storage space.

Land Size: Generous 708 m² block, offering ample outdoor space for leisure and entertainment.

Extra: Ducted AC, 18kw Solar, heated pool, Dual driveway with side access, ceiling fans, Water Tank and much more.

School Catchment: Zoned for Redland Bay State School and Victoria Point State High School, ensuring quality education options.

Environmental Considerations: No bushfire, flood, or heritage overlays detected, ensuring peace of mind regarding environmental risks.

This property combines generous living spaces with a prime location, making it an ideal choice for discerning buyers seeking comfort and convenience in Redland Bay.

5 BED | 2 BATH | 2 CAR

PRICE:

Expressions Of Interest

OPEN FOR INSPECTION:

N/A



Mandy Rowe

0431210477

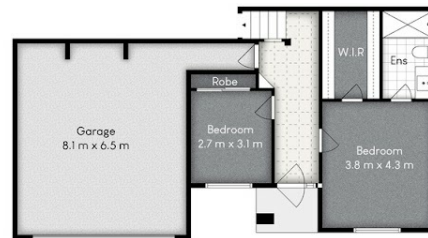
mandyrowe@atrealty.com.au

www.mandyrowerealty.com

NORTH



Floor 2



Floor 1

16 CYPRESS STREET, REDLAND BAY

6 2 2

Whilst every attempt has been made to ensure the accuracy of the floor plan contained here, measurements of doors, windows, rooms and any other item are approximate and no responsibility is taken for any error, omission, or misstatement. This plan is for illustrative purposes only and should only be used as such by any prospective purchaser.



Disclaimer: Please note this floor plan is for marketing purposes and is to be used as a guide only. All dimensions are estimates only and may not be exact measurements.