



## FOR SALE

### DUAL KEY APARTMENT OVERLOOKING MAIN POOL TO OCEAN

What an outstanding position in an outstanding location. Mantra Resort Kingscliff occupies prime position on Salt Beach just down the road from the vibrant Kingscliff village linked by a beachfront walkway. 12 minutes South of Gold Coast Airport and 35 minutes North of Byron Bay this Tweed Coast hamlet has been an increasingly popular bolt hole for many holidaymakers since its inception in the early 2000's.

The resort itself has immaculate manicured gardens and many amenities to while away the time including 2 pools, outdoor spa, gym, 2 tennis courts, bar, award winning restaurants along with a tavern.

With the dual key configuration this 2 bedroom apartment offers enormous flexibility with the opportunity for owners to stay in one, or both of the adjoining ensuited rooms (joined by a common foyer). If only staying in one the other room can keep renting and bringing in revenue.

Offered fully furnished apartment 3208/9 is ideally perched mid level on the end on Wing 3 and with its east facing sundrenched aspect over the main lagoon pool towards Salt Beach with ocean glimpses this is a very sought after location for guest bookings.

- Fully furnished
- Laundry
- Full kitchen/Dishwasher
- Spa bath
- Secure underground parking

There are only a handful of dual key apartments in the resort that offer eastern aspect over pool and with ocean glimpses so do not delay contact Brett today to avoid disappointment.

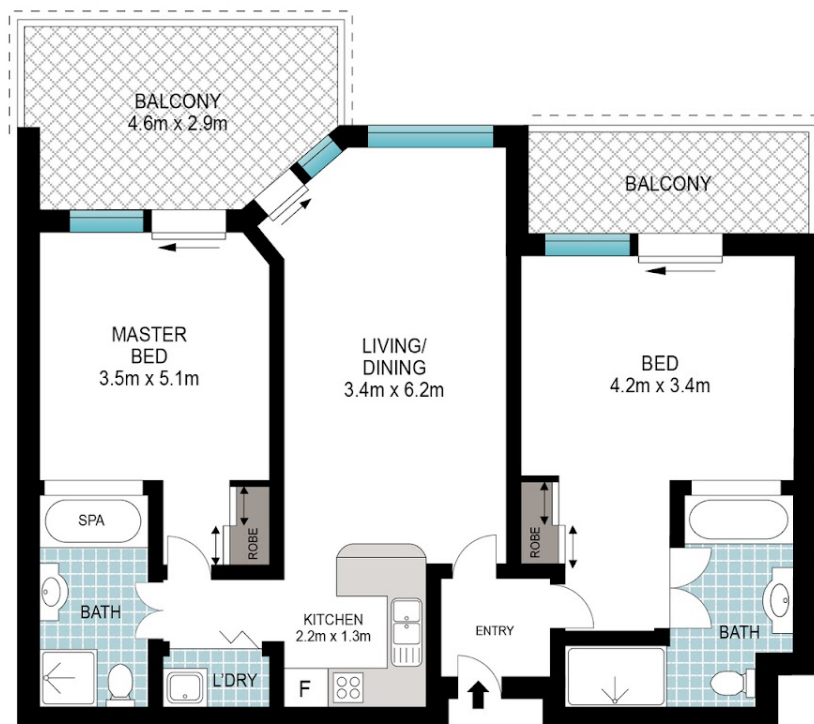
2 BED | 2 BATH | 1 CAR

PRICE:  
\$675,000 - \$695,000

OPEN FOR INSPECTION:  
N/A



**Brett Swales**  
**0424507005**  
brettswales@atrealty.com.au  
[www.atrealty.com.au](http://www.atrealty.com.au)



Plans are indicative only. Dimensions are approximate. All information contained herein is gathered from sources we believe to be reliable. However, we cannot guarantee its accuracy and interested persons should rely on their own enquiries

3208\_09 / 9 GUNNAMATTA DRIVE, KINGSCLIFF

2 2  
Internal: 89 m<sup>2</sup> | External: 21 m<sup>2</sup> | Total: 110 m<sup>2</sup>

Disclaimer: Please note this floor plan is for marketing purposes and is to be used as a guide only. All dimensions are estimates only and may not be exact measurements.