



SOLD

SPACIOUS & STYLISH FAMILY HOME IN A PRIME LOCATION

Perfectly positioned within walking distance to many schools including St John's Anglican College, parks, shops, and public transport, this beautifully maintained home is ready for you to move in and enjoy. Offering a functional layout with multiple living areas and a seamless indoor-outdoor flow, it's ideal for families, first-home buyers, or investors alike.

The spacious master bedroom features air conditioning, a walk-in robe, and a private ensuite, while two additional bedrooms with built-in robes are serviced by the main bathroom with a separate toilet. The heart of the home is the well-appointed kitchen, complete with a breakfast bar and ample storage, overlooking the open-plan living and dining areas.

Step outside to the expansive covered patio - perfect for year-round entertaining. The low-maintenance yard ensures more time for relaxation, while the double lock-up garage and garden shed provide convenience and extra storage.

Features You'll Love:

- 3 spacious bedrooms with built-in robes
- 2 bathrooms, including a private en-suite to the master
- Multiple living areas for flexibility and comfort
- Air-conditioning and ceiling fans throughout for year-round comfort
- Large covered outdoor entertaining area
- Double lock-up garage & separate laundry
- Security screens for peace of mind
- Low-maintenance house and yard with garden shed
- Minutes to Forest Lake Shopping Centre, schools & transport
- Just 31 minutes to the CBD and only 1hr on public transport
- Just a 15 minute walk to the Lake via the pathways of the nearby reserve which is just meters away

Don't miss this fantastic opportunity to secure a quality home in a sought-after location. Contact us today to arrange your inspection! The first 'Open for Inspection' is this Saturday the 1st of March.

3 BED | 2 BATH | 2 CAR

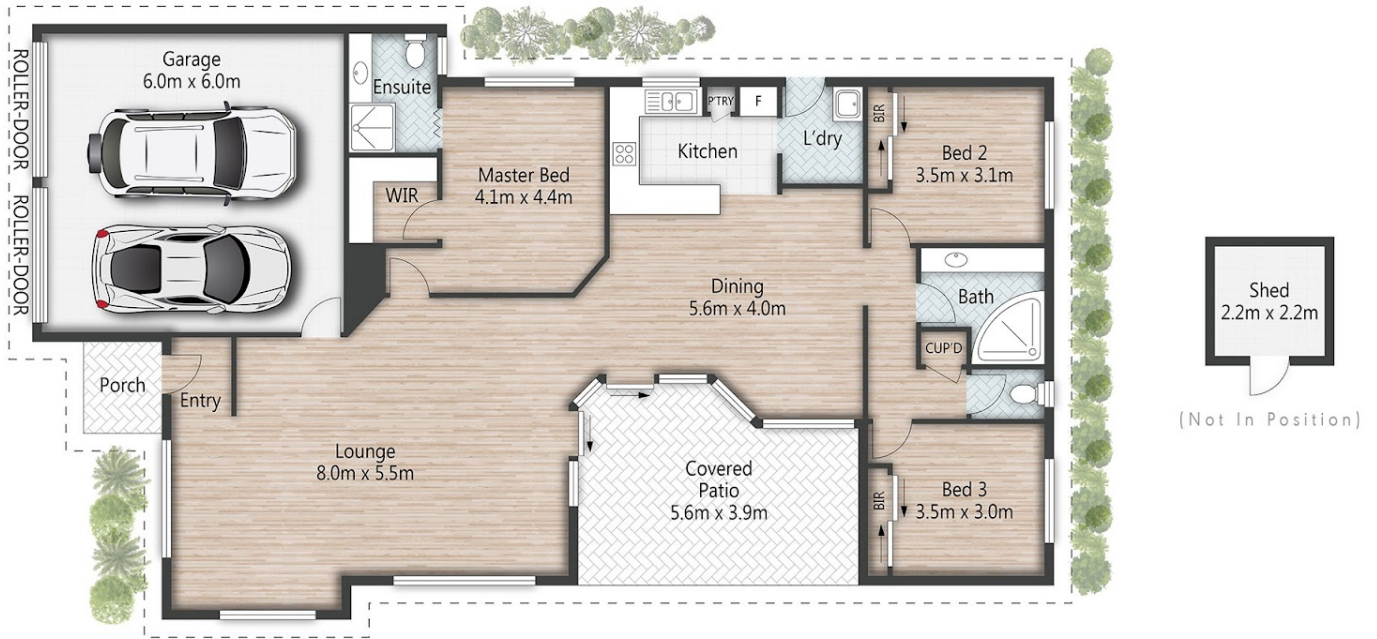
PRICE:
\$872,000

OPEN FOR INSPECTION:
N/A



Adrian Matthews
0403171644

adrianmatthews@atrealty.com.au
www.atrealty.com.au



19 Glasshouse Crescent **FOREST LAKE**

3 | 2 | 2 | 197m²

All dimensions are approximate; they are subject to errors and inaccuracies and no liability will be accepted. Plans are shown for marketing purposes only.

Disclaimer: Please note this floor plan is for marketing purposes and is to be used as a guide only. All dimensions are estimates only and may not be exact measurements.

Adrian Matthews
0403171644
 adrianmatthews@atrealty.com.au
www.atrealty.com.au

