

SOLD

EXQUISITE 1 BED, 1 BATH APARTMENT IN BRISBANE SKY-TOWER LOCATED IN THE HEART OF BRISBANE

Spacious Living Area: The open-plan living area leads seamlessly to panoramic floor-to-ceiling windows, providing breathtaking views of the city skyline. Imagine unwinding after a day of exploring Brisbane's vibrant culture and nightlife.

Modern Kitchen: The fully equipped kitchen boasts sleek cabinetry, state-of-the-art appliances, and ample counter space, all designed to inspire your culinary creativity.

Tranquil Bedroom: The spacious bedroom offers peaceful retreat, with plush carpeting and ample built-in storage solutions.

Stylish Accessible Bathroom: Experience luxury in the modern bathroom, featuring quality fixtures and contemporary finishes.

Building Amenities:

Brisbane Skytower offers a world-class living experience, featuring a range of exclusive amenities designed for comfort and indulgence:

- Indoor Pool: Swim with a view in the stunning indoor pool, enjoying unparalleled vistas of the city below.
- Fully Equipped Gym: Stay fit with the state-of-the-art gym facilities, providing a comprehensive range of equipment to suit every fitness enthusiast.
- **Entertainment Areas**: Host gatherings or unwind in chic entertainment spaces and communal areas, perfect for socializing or relaxation.
- 24/7 Concierge Service: Benefit from round-the-clock concierge services, providing convenience and peace of mind.

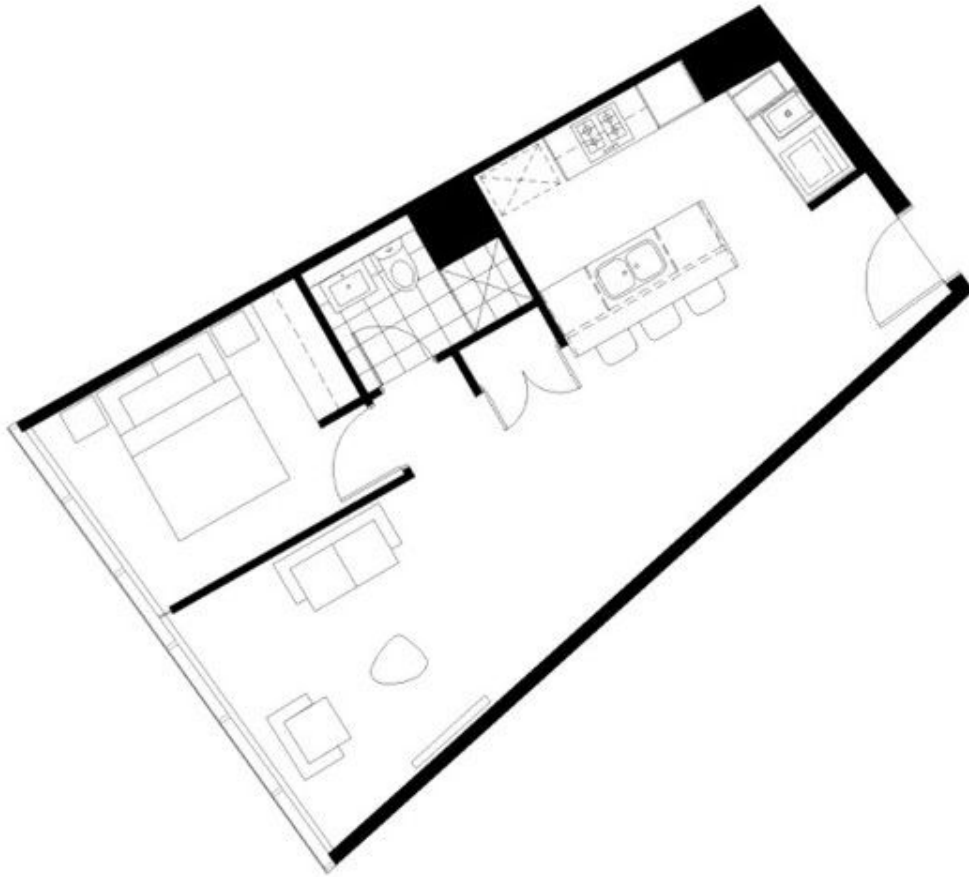
1 BED | 1 BATH | 0 CAR


PRICE:
\$510,000

OPEN FOR INSPECTION:
N/A



Mario Economou
0421236859
mario.e@atrealty.com.au
www.atrealty.com.au





BRISBANE SKYTOWER
APARTMENTS

UPTOWN

LEVEL 19 - 32

1903	2503	3103
2003	2603	3203
2103	2703	
2203	2803	
2303	2903	
2403	3003	

LOCATION





STRATA AREA

58m²

222 MARGARET ST, BRISBANE

Brisbane Skytower is a new development of 32 storeys, comprising 320 units, located in the Uptown precinct of Brisbane. The development is situated on a prime location in the heart of the city, close to the city centre and the Brisbane River. The development is a landmark building and will provide a high quality living environment for its residents. The development is a landmark building and will provide a high quality living environment for its residents.

23.10.14

Disclaimer: Please note this floor plan is for marketing purposes and is to be used as a guide only. All dimensions are estimates only and may not be exact measurements.

Mario Economou
0421236859
 mario.e@atrealty.com.au
www.atrealty.com.au

