



# FOR SALE

## SOLD! SPACIOUS TOWNHOME IN MT GRAVATT EAST!

SOLD!

(\*Photographs displayed are archival and contain different furniture.)

Ladies and gentlemen, we are excited to present to you this superb lifestyle and investment opportunity!

Style and space are all key elements of this well presented 2-bedroom, 2-bathroom townhome strategically located close to every local amenity and public transport.

Situated in a quiet cul-de-sac, the modern, well-maintained complex is neatly presented, and the townhome has been looked after and is in great condition.

The lower level includes the entry, a larger-than-normal garage, under-stair storage room, additional rear storage space and the laundry facility.

The central level features the spacious living and dining areas, with 9-foot ceilings that create a sense of light and space. This area opens out onto the outdoor space and private courtyard.

The kitchen is also located on the central level, and it is well-appointed and a great size, and there is also a powder room for your convenience.

On the upper level, the home's 2 bedrooms are both an excellent size and have built-in wardrobes, ensuites and air-conditioning. The main bedroom also has access to a private balcony.

Situated at the end of a quiet cul-de-sac with a good-sized pool onsite, the other advantages of this location are:

- Just 90m to a local bus stop
- 170m to Mt Gravatt Plaza shops
- Near Garden City + Carindale shopping centres

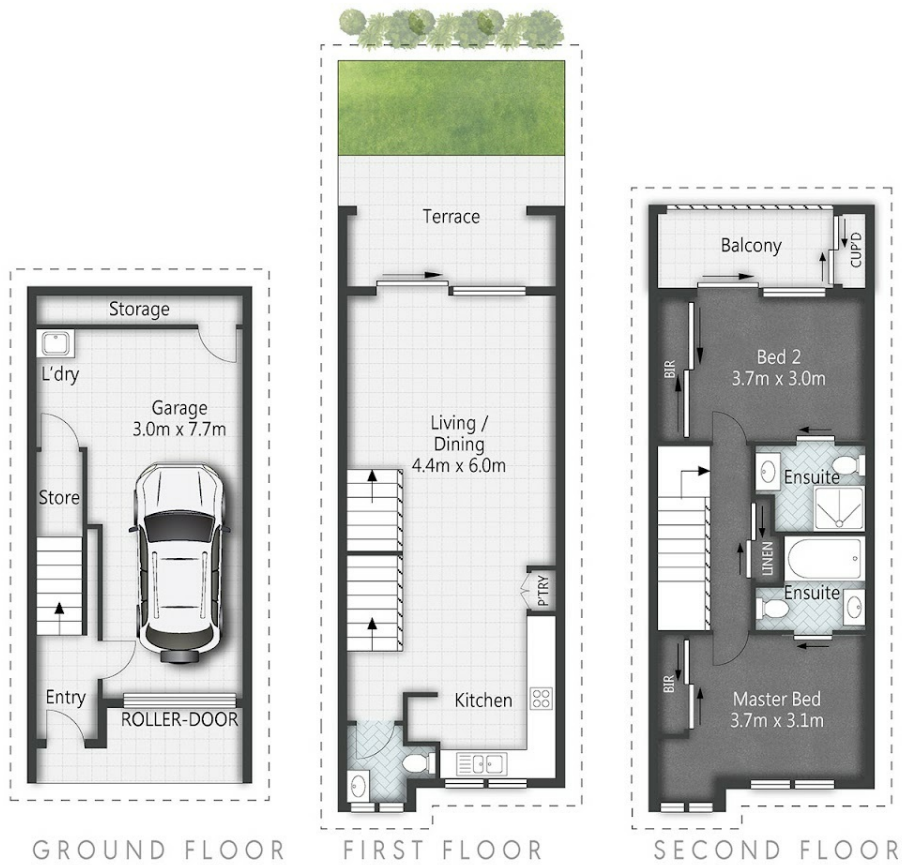
2 BED | 2 BATH | 1 CAR

PRICE:  
SOLD!

OPEN FOR INSPECTION:  
N/A



**Ben Tafolo**  
**0419260719**  
tafolo@atrealty.com.au  
[teamtafolo.com.au](http://teamtafolo.com.au)



37/18 Whitley Street **MOUNT GRAVATT EAST**

2 | 2 | 1 | 151m<sup>2</sup>

All dimensions are approximate; they are subject to errors and inaccuracies and no liability will be accepted.  
Plans are shown for marketing purposes only.

Disclaimer: Please note this floor plan is for marketing purposes and is to be used as a guide only. All dimensions are estimates only and may not be exact measurements.