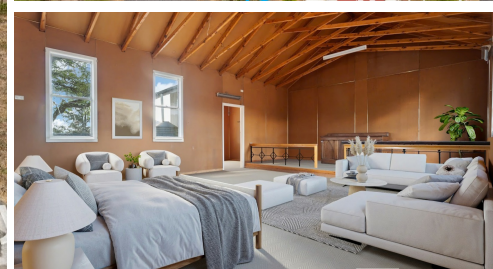


10 HARGRAVES STREET, SOFALA, NSW, 2795



FOR SALE

ESCAPE TO STUNNING SOFALA NSW

Ye Old Church Sofala NSW

This little old church on 3/4 of an acre is oozing with potential. Interior offers 80m2 of development potential.

Would make an ideal weekender, residence, art gallery or studio.

Formally an Anglican Church, the building is perched at the top of a hill in Hargraves St Sofala. It has a stunning aspect being surrounded by the rolling hills of Sofala Village.

The building has the former Church Hall plus a changeroom / vestibule. The entire building could be converted into overnight accommodation or an airbnb (stca).

SOFALA Is a scenic gold rush village nestled between Bathurst and Mudgee in Central West NSW.

LAND SIZE 3,046m2

HALL SIZE 8 x 10 (80m2)

ZONING Village / commercial or residential uses

COUNCIL Bathurst Regional Council

HERITAGE The property includes an old cemetery which must be preserved.

RATES \$543.98 pa

SEWER No

A septic system may be installed (stca)

ELECTRICITY Yes

WATER Tank Water

LOCALITY Sofala General Store, Cafe and Hotel are a 5 minute walk from property

Bathurst - 40 minutes

Mudgee - 60 minutes

Penrith - 2 hours 40 minutes

INSPECT By appointment

AGENT Mark Sullivan

0429 954 990

sully@atrealty.com.au

MSP Real Estate 248 Howick St Bathurst NSW 2795

1 BED | 0 BATH | 0 CAR

PRICE:

\$250,000

OPEN FOR INSPECTION:

N/A



Mark Sullivan

0429954990

sully@atrealty.com.au

www.atrealty.com.au