



FOR SALE

STUNNING 3 BEDROOM UNIT IN SOUGHT-AFTER BERRIMAH, NT

This stunning unit boasts not only a prime location, but also an abundance of space and modern amenities. Perfect for those seeking a luxurious and comfortable lifestyle, this property is sure to impress.

As soon as you step inside, you'll be greeted by the spacious and airy living area, filled with natural light and adorned with elegant finishes. The open floor plan seamlessly connects the living, dining, and kitchen areas, making it the perfect space for entertaining and creating lasting memories with loved ones.

The kitchen is a chef's dream, featuring state-of-the-art appliances, ample storage space, and a sleek design that will impress even the most discerning buyer.

This unit offers three generous bedrooms, each with its own unique charm and character. The master bedroom is a true oasis, featuring a walk-in robe and a luxurious en-suite bathroom. The other two bedrooms are equally as spacious and share a modern and stylish bathroom.

But that's not all, this property also boasts a total of three carparks, providing plenty of space for your vehicles and extra storage. No more fighting for parking spots or cluttered garages, here you'll have more than enough room for all your toys and tools.

Property Highlights:

- Prime location near airport, shops & Stuart Highway
- Spacious & modern open-plan design
- Sleek chef's kitchen with island bench & storage
- Three large bedrooms, main with ensuite
- Quality floor tiles throughout
- Main bathroom with internal laundry
- Great ventilation plus air conditioning
- Two undercover parking spaces + extra spot
- Low-maintenance yard for easy living
- Park with BBQ & playground nearby
- Schools & shops just minutes away

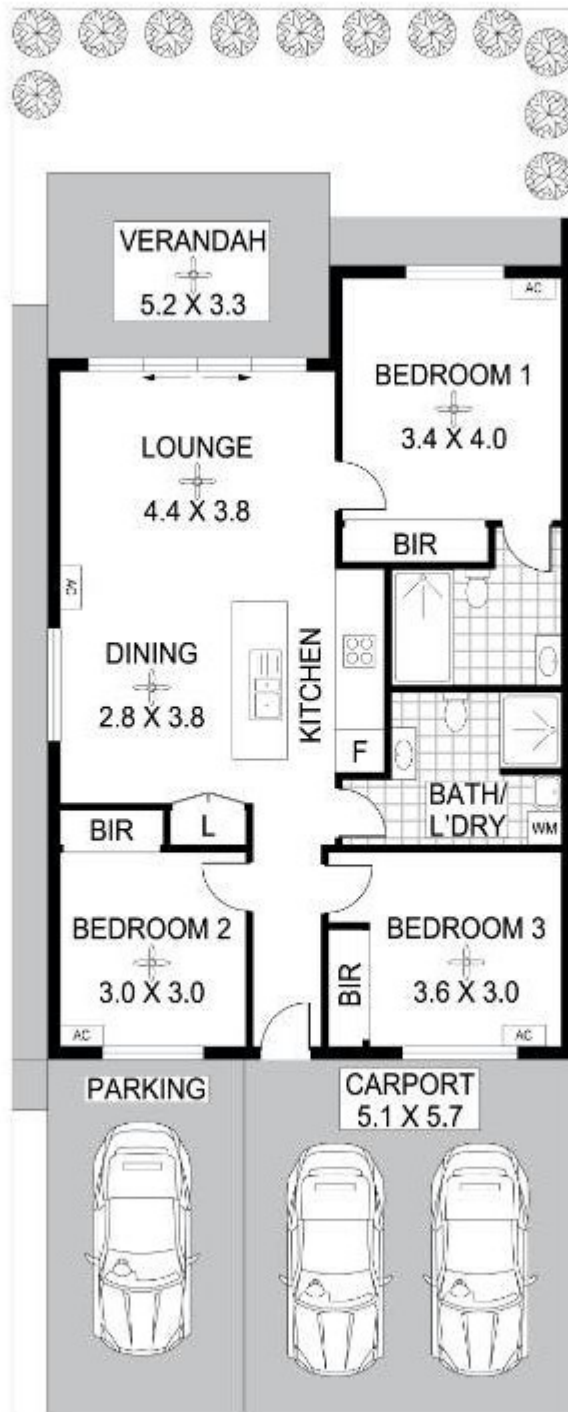
3 BED | 2 BATH | 3 CAR

PRICE:
OVER \$475,000

OPEN FOR INSPECTION:
N/A



Nicole Wheeler
0417508800
nicolewheeler@atrealty.com.au
www.atrealty.com.au



Disclaimer: Please note this floor plan is for marketing purposes and is to be used as a guide only. All dimensions are estimates only and may not be exact measurements.