



SOLD

ESCAPE TO THE COUNTRY! WATER GALORE..

Situated on over 11 acres of useful land and an hour's drive from Hobart (approx.) you will find this sunny property known as 'The Glen'. Previously recognised for producing strawberries and vegetables, the land could lend itself to multiple uses having the spring fed dam and a permanent bore. The character filled homestead is surprisingly spacious and has a beautiful welcoming feeling the moment you step inside.

The home consists of 4 bedrooms, 1 updated bathroom, 2 toilets, and a roomy living area heated by a cosy wood heater. High ceilings and timber floorboards are just some of the features you can find here.

The bathroom and kitchen have had some upgrades along with a new septic tank, new upgraded electrical, external painting and much more... Household water is provided from 2 x 23,000 L (5,000 Gallon) water tanks and a bore producing good quality water.

Outside you will find 5 fenced paddocks, hot house, chook houses, an old barn ready for restoration, workshops, carports, stock ramp etc. Ideal to bring the horses, sheep, alpacas, tractor and motorbikes.

The many services (Hospital, School, Bank, Pharmacy, etc.) and cafes in the gorgeous Georgian Village of Oatlands are all around a 10-minute drive away from this property. There is a Bowls Club, Golf Course, RSL Club, Hotel, Aquatic Centre and many community groups to join. Call Racquel Cleaver your 'Hobby Farm Specialist' today to avoid missing out on this rare gem.

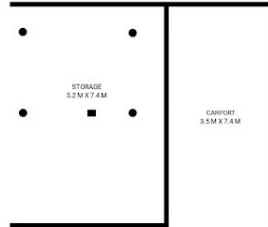
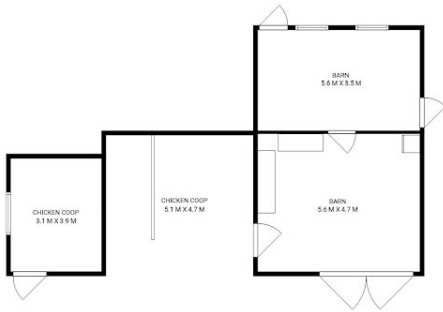
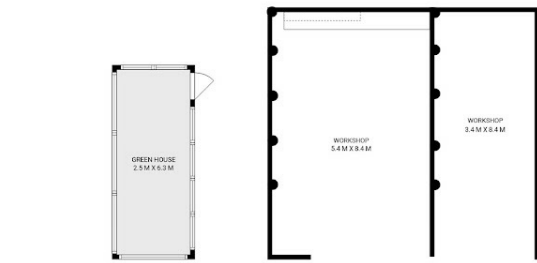
4 BED | 1 BATH | 4 CAR

PRICE:
\$525,000

OPEN FOR INSPECTION:
N/A



Racquel Cleaver
0497864680
racquel@atrealty.com.au
www.atrealty.com.au



1282 Tunnack Road, Mount Seymour

House area: 152 sqm

Areas and dimensions are approximate and therefore this floor plan should only be used for illustrative purposes.

Real Estate Marketing by nextcreative.com.au



Disclaimer: Please note this floor plan is for marketing purposes and is to be used as a guide only. All dimensions are estimates only and may not be exact measurements.

