



FOR SALE

VERSATILE LIVING IN A PEACEFUL BUSHLAND SETTING

INSPECTIONS BY APPOINTMENT ONLY - ENQUIRE NOW TO ARRANGE YOURS!

Privately positioned on an expansive 4.05-acre (approx.) parcel in one of the Dandenong Ranges' most peaceful settings, this uniquely versatile property delivers space, seclusion and flexible living just minutes from Upwey Village, schools and public transport.

The split-level main residence is warm and inviting, showcasing raked ceilings with exposed beams, polished timber floors and generous open-plan living and dining zones framed by lush garden outlooks. A well-equipped timber kitchen sits at the heart of the home, complemented by up to four bedrooms (or three plus a study), two bathrooms, and a quiet sunroom retreat ideal for reading or relaxation.

Downstairs, a second living area and private bedroom provide excellent separation for teenagers guests or work-from-home arrangements.

Enhancing the property's flexibility is a fully self-contained detached bungalow complete with its own kitchenette, bathroom, and split system — ideal for extended family, visitors or independent rental income.

Vehicle accommodation is excellent, with a freestanding garage, additional single garage, and a double carport, along with a separate tool shed for storage or hobby use. The gently sloping block is a haven of privacy and natural beauty, surrounded by tall trees and native plantings alive with birdlife.

Offering outstanding scope for families, blended households, or buyers seeking a peaceful lifestyle with room to grow, this is a rare and rewarding opportunity in a tightly held Hills community.

5 BED | 3 BATH | 4 CAR

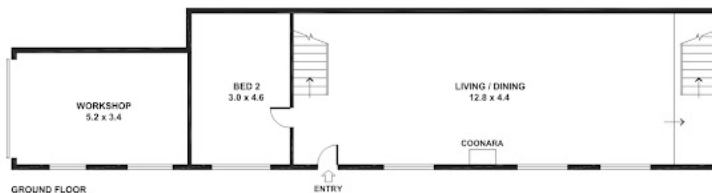
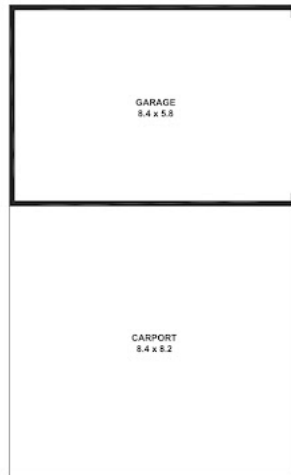
PRICE:
\$1,500,000

OPEN FOR INSPECTION:
N/A



Scott Collins
0499005265
scottcollins@atrealty.com.au
scottphillipcollin.wixsite.com

71-73 Mast Gully Road, Upwey



Disclaimer: Please note this floor plan is for marketing purposes and is to be used as a guide only. All dimensions are estimates only and may not be exact measurements.