



FOR LEASE

MODERN APARTMENT FOR RENT IN BLACKBURN VILLAGE

Enjoy convenience and contemporary living in this stylish low-rise apartment, perfectly positioned in the heart of Blackburn Station Village. With shops, cafés, and daily essentials just steps away, plus easy access to public transport and major shopping centres, this home offers both comfort and lifestyle.

Key Features:

- . Bright open-plan living with natural light
- . Spacious bedroom with built-in robes
- . Modern kitchen with dishwasher
- . Reverse cycle air conditioning for year-round comfort
- . European laundry for added convenience
- . Large private balcony, perfect for relaxing
- . Secure entry with intercom for peace of mind
- . Basement parking (not car stacker) & storage cage
- . Visitor parking available

Prime Location:

- . Steps from Blackburn Train Station, shops & cafés
- . Close to Box Hill Central, Forest Hill Chase & Doncaster Westfield
- . Easy access to M3 Eastern Freeway & local par

1 BED | 1 BATH | 1 CAR

PRICE:

\$490 per week

OPEN FOR INSPECTION:

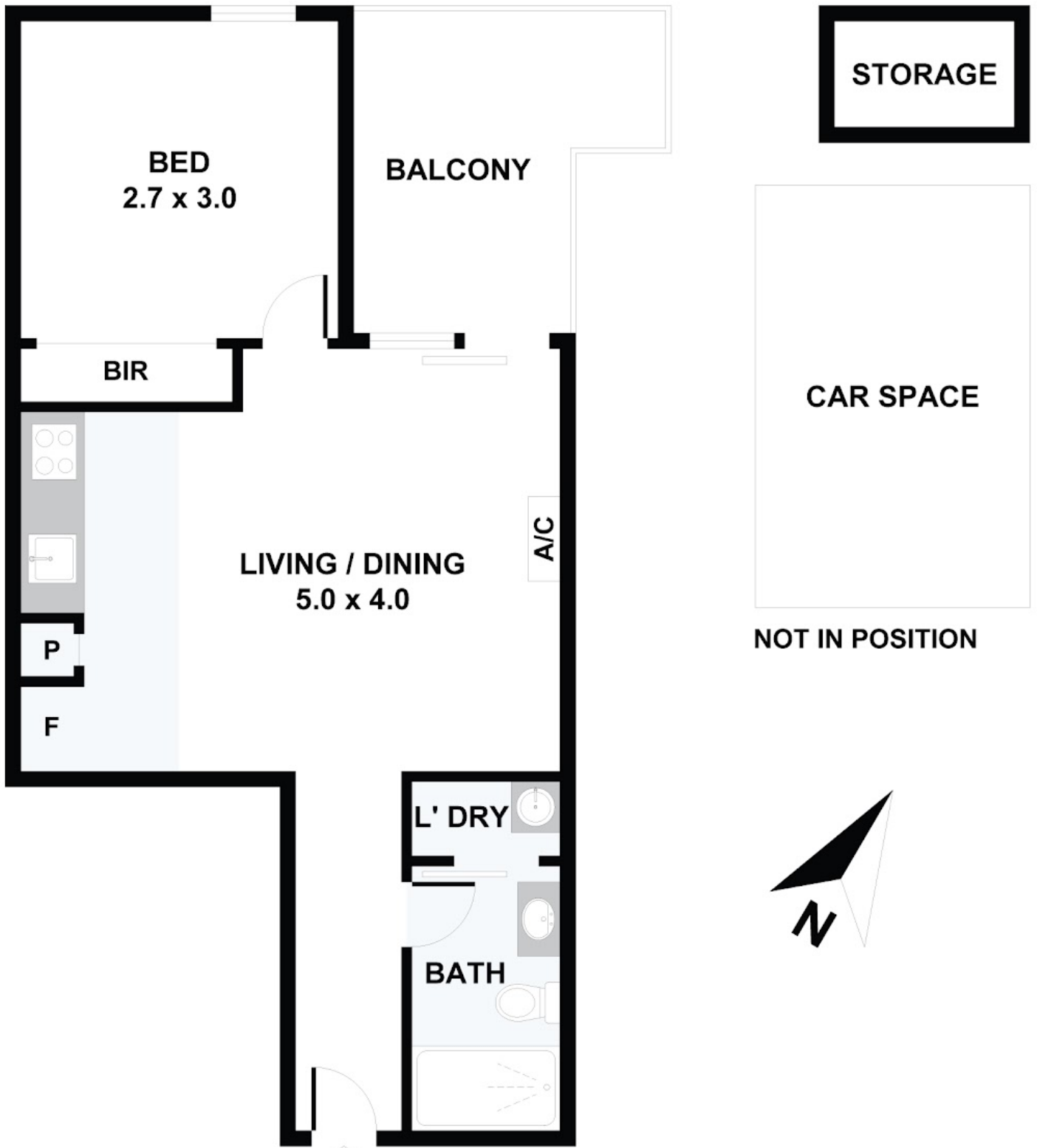
N/A



Bruce Ung
0422353767

bruceung@atrealty.com.au

www.atrealty.com.au



Disclaimer: Please note this floor plan is for marketing purposes and is to be used as a guide only. All dimensions are estimates only and may not be exact measurements.

