



FOR SALE

BAULKHAM HILLS BEAUTY: SPACIOUS 2-BEDROOM BRICK TOWNHOUSE!

This modern full brick townhouse offers the perfect blend of comfort, convenience, and style. Enjoy effortless commuting with a short walk to the express city bus stop and easy access to the M2 motorway. Close to shops, cafes, and restaurants, this home provides a low-maintenance lifestyle in a prime location.

- * Effortless commuting – Walk to the express city bus stop, with quick access to the CBD.
- * Close to amenities – Shops, cafes, and restaurants are just moments away.
- * Solid & secure – Full brick construction ensures durability and peace of mind.
- * Spacious & comfortable – Two generously sized bedrooms, main with ensuite and built-ins.
- * Modern open-plan living – Lounge and dining area designed for seamless flow.
- * Stylish stone kitchen – Equipped with quality gas appliances.
- * Private courtyard – Perfect for outdoor relaxation.
- * Low-maintenance lifestyle – Enjoy more free time with minimal upkeep.
- * Secure parking & storage – Single car space with a large storage area.
- * Easy M2 access – Ideal for quick and convenient travel

****Disclaimer**** All information contained herein is gathered from sources we believe to be reliable. The agent cannot guarantee its accuracy and does not accept responsibility for such. Interested parties are urged to rely on their own enquiries.

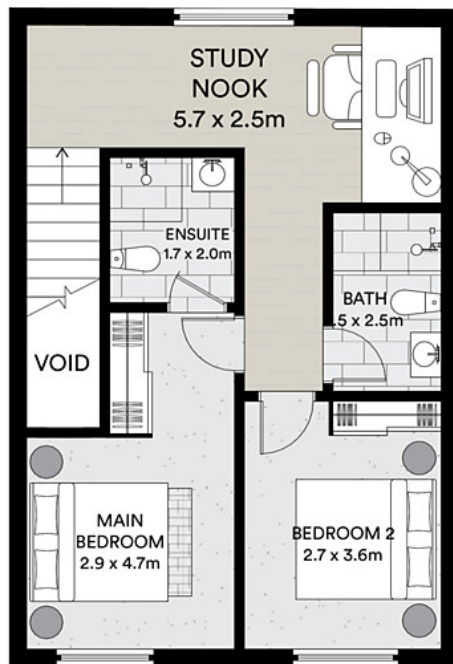
2 BED | 2 BATH | 1 CAR

PRICE:
Price Guide \$850,000

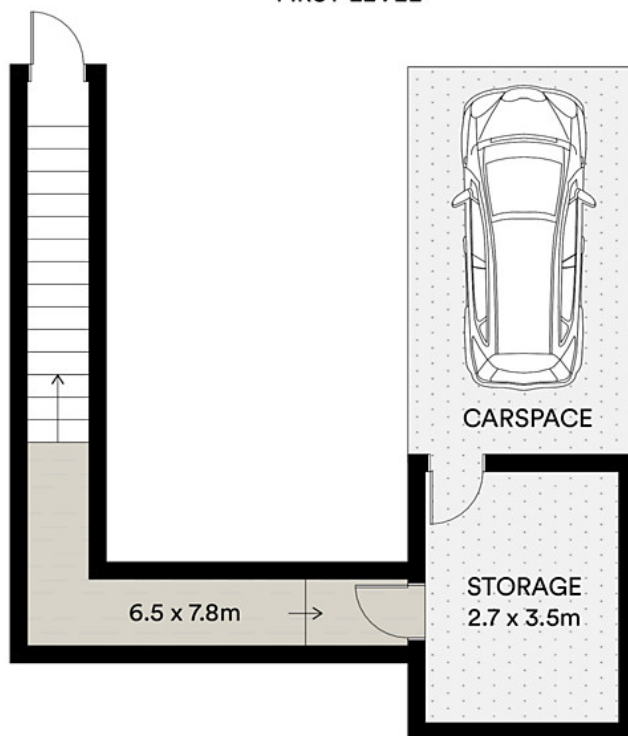
OPEN FOR INSPECTION:
N/A



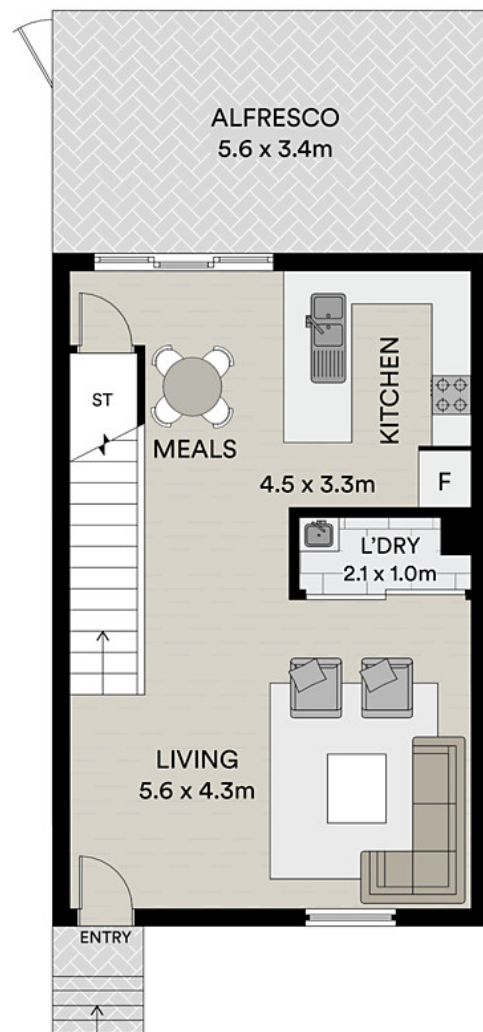
Thomas Choy
0414253119
thomaschoy@hillsestategroup.com.au
hillsestategroup.com.au



FIRST LEVEL



LOWER LEVEL



ENTER LEVEL

Disclaimer: Please note this floor plan is for marketing purposes and is to be used as a guide only. All dimensions are estimates only and may not be exact measurements.



All information contained in this document is from sources we believe to be accurate, however we cannot guarantee its accuracy. Interested persons should make and rely on their own enquiries in relation to measurements, dimensions, layout, furniture and descriptions.