

## FOR SALE

### COASTAL PARADISE LESS THAN 500M FROM BEACH

This welcoming two-bedroom house offers an authentic coastal lifestyle on a generous 601-square-meter block, perfectly positioned to embrace the relaxed atmosphere of the Central Coast.

The home's practical layout maximizes comfort and functionality, featuring beautiful timber floorboards throughout that add character and warmth to the living spaces. The well-appointed lounge room provides a comfortable retreat, while the single bathroom has been thoughtfully designed to serve the household efficiently.

Parking is a breeze with the convenience of both a garage and carport, accommodating two vehicles with ease. The spacious grounds offer plenty of potential for gardening enthusiasts or future outdoor improvements.

#### Key Features:

- Timber floorboards throughout,
- Secure fenced property on a 601sqm block
- Combined garage and carport for two-vehicle accommodation
- Less than a 500m walk to the beach

This home offers the perfect balance of practical living spaces and local charm. The generous land size provides plenty of scope for future enhancements, while the current layout delivers immediate liveability in one of the Central Coast's most sought after suburbs.

2 BED | 1 BATH | 2 CAR

#### PRICE:

Price Guide \$750,000

#### OPEN FOR INSPECTION:

N/A

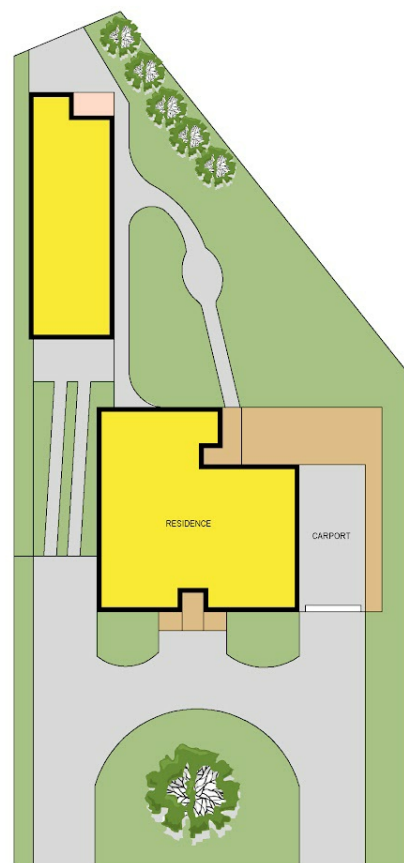
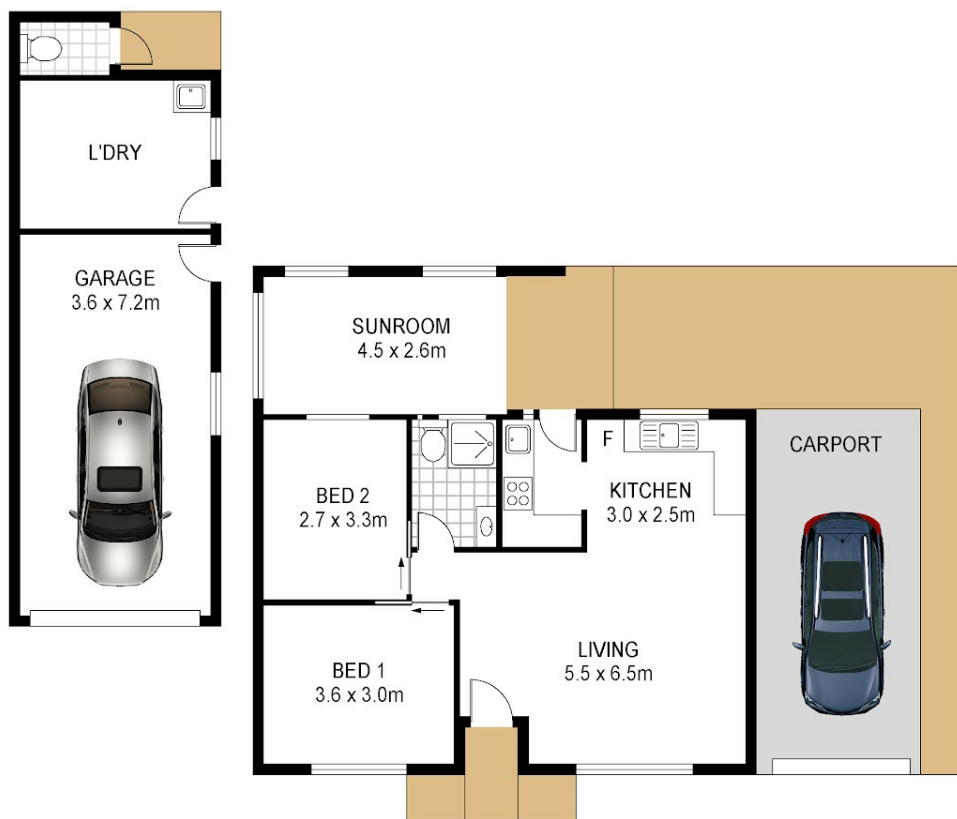


**Brad Barker**

**0413875833**

[bradbarker@atrealty.com.au](mailto:bradbarker@atrealty.com.au)

[www.atrealty.com.au](http://www.atrealty.com.au)



Land Area: 601sqm



3 Wilfred Barrett Drive  
Noraville



Total Internal Floor Area: 71 sqm

Scale in metres. Indicative only. Dimensions are approximate. All information contained herein is gathered from sources we believe to be reliable. However we cannot guarantee its accuracy and interested persons should rely on their own enquiries.



Disclaimer: Please note this floor plan is for marketing purposes and is to be used as a guide only. All dimensions are estimates only and may not be exact measurements.