



FOR SALE

LOW MAINTENANCE NIMBIN LIVING

Uri Ross proudly presents 9 Tareeda Way, a beautifully designed two-bedroom, one-bathroom home set on a generous 589m² corner block with great views. Thoughtfully built for modern low maintenance living, this inviting property offers an easy-care lifestyle with all the essentials in place, making it ideal for those looking to downsize, invest, or those seeking a relaxed village lifestyle.

From the moment you arrive, you'll appreciate the sense of privacy this fully fenced property provides. The manicured lawns and well-established gardens create a peaceful, leafy setting, while the addition of a garden shed offers practical storage for tools, outdoor equipment, or hobby supplies.

Step inside to a warm and welcoming space where functionality meets style. The home has been carefully designed to maximise natural light and airflow, enhancing the sense of openness and capturing the outlook of the Nightcap Range. The practical layout ensures comfortable everyday living, with well-proportioned bedrooms, reverse cycle air conditioning for all year comfort and a central bathroom.

Perfectly positioned within walking distance to Nimbin village, this home allows you to enjoy the best of both worlds, solitude and convenience. Take a leisurely stroll to the local cafés, shops, and amenities, all while knowing you have your own private oasis to return to. For those who love the outdoors, the new 'Rainbow Walking Track' is easily accessible via Alternative Way, just around the corner, offering a scenic and peaceful way to explore the beauty of the area.

With mains power, gas hot water, and full council approval, this property is move-in ready, offering complete peace of mind. Whether you're searching for a secure, low-maintenance home or a smart investment opportunity in a highly sought-after location, this home is sure to impress.

- Rates \$2701.50

For more information Call Uri today.

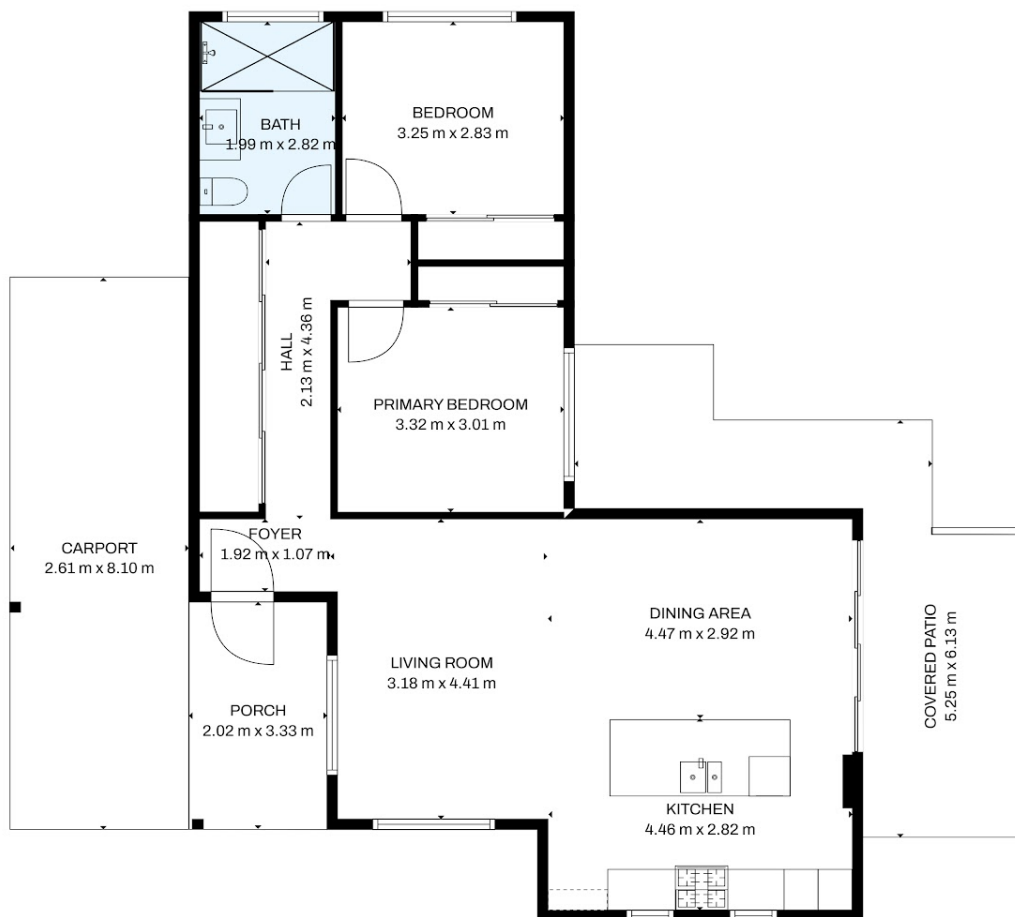
2 BED | 1 BATH | 1 CAR

PRICE:
\$650,000

OPEN FOR INSPECTION:
N/A



Uri Ross
0423280278
uri.ross@atrealty.com.au
www.atrealty.com.au



1/9 Tareeda Way, Nimbin

Floor plan disclaimer: Acre Media Group floor plans including furniture, fixture measurements and dimensions are approximate and for illustrative purposes only.

2 1
Approx. Total Area: 101m²
Excluding car port & porch area

Disclaimer: Please note this floor plan is for marketing purposes and is to be used as a guide only. All dimensions are estimates only and may not be exact measurements.