



FOR LEASE

DEPOSIT RECEIVED

Spacious & Stylish 4-Bedroom Family Home in a Prime Location

Note: 6-month initial lease only

This beautifully designed 4-bedroom, 3-bathroom home offers the perfect blend of space, comfort, and convenience. Set on a generous, fully usable block, this property provides an exceptional lifestyle for families, professionals, and those who love the great outdoors.

Property Features:

- 4 spacious bedrooms - 3 with built-in wardrobes, while the main bedroom boasts a walk-in robe and an ensuite.
- Main bedroom with ensuite bathroom and walk-in robe
- Polished timber floors throughout
- Spacious lounge area with air conditioning
- Multiple versatile living spaces, including lounge, dining, rumpus room and study nook
- Modern kitchen with stainless steel appliances
- 3 well-appointed bathrooms
- Double garage with an attached third bathroom
- Large shed perfect for a workshop, extra storage, or creative pursuits.
- Secure yard with BBQ area for entertaining on the paved outdoor area.
- Prime Location close to schools, shops, and transport while embracing the beauty of the mountains.

Note: Home office adjacent to the garage is not included in the tenancy.

LOCATION HIGHLIGHTS

- Approx. 600m to South Lawson Waterfall Walking Track
- Approx. 900m to Lawson Bowling Club
- Approx. 950m to Lawson Railway Station
- Approx. 1.8km to Lawson Oval
- Approx. 1.8 km to South Lawson Parklands
- Approx. 2.5km to Hazelbrook Shopping Village

APPLICATION PARTICULARS -

4 BED | 3 BATH | 2 CAR

PRICE:

\$750

OPEN FOR INSPECTION:

N/A

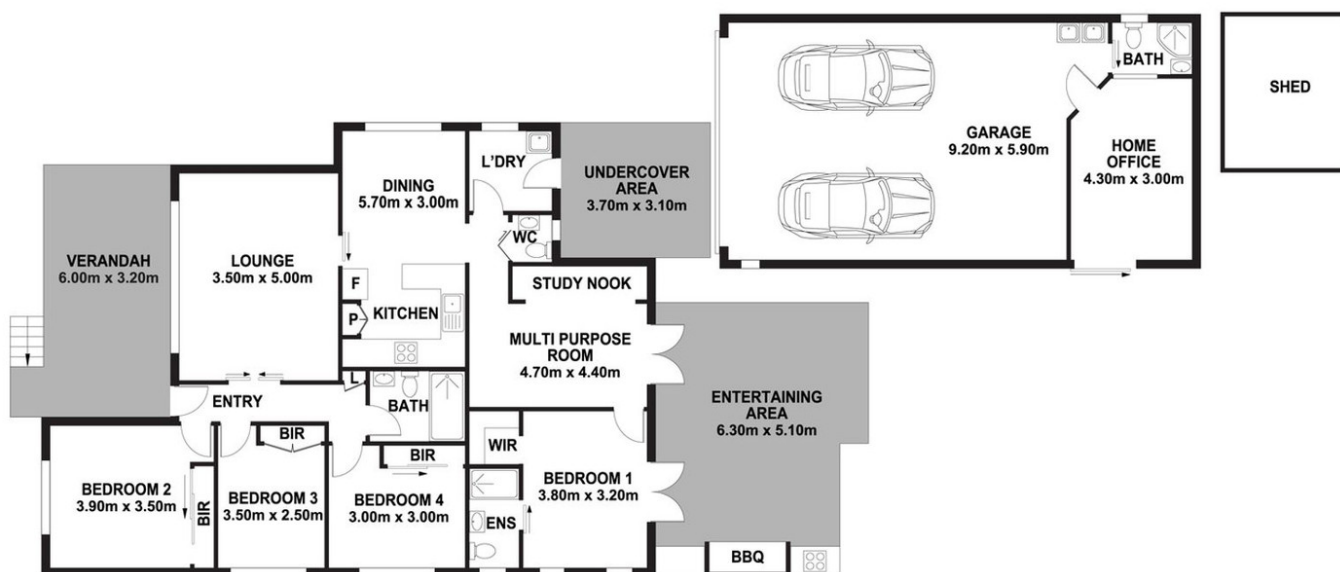


Gavin McCutcheon

0413686969

gavin@atrealty.com.au

buyingsellingrenting.com.au



33 Christabel Street, Lawson

DISCLAIMER: PLANS SHOWN ARE FOR PRESENTATION PURPOSES AND ARE NOT PART OF ANY LEGAL DOCUMENT. ALL MEASUREMENTS AND FIGURES ARE APPROXIMATE.

Disclaimer: Please note this floor plan is for marketing purposes and is to be used as a guide only. All dimensions are estimates only and may not be exact measurements.