



FOR SALE

6 UNIT COMPLEX IN PRIME ORMISTON LOCATION!

Discover a unique opportunity to secure contemporary designed living in the heart of Ormiston with the upcoming Monogram Ormiston development. Arena Constructions is set to commence building the townhouse development, with completion anticipated by January 2026.

These six luxury townhomes are ready to be built, complete with meticulously crafted architectural plans, combining comfort, sophistication, and convenience in a prime location. Designed with a modern lifestyle in mind, Monogram Ormiston offers thoughtfully curated floor plans that cater to a variety of needs. Choose from spacious 3-bedroom layouts or a flexible 4-bedroom option with an additional study, ideal for a dedicated home office or a peaceful retreat. Each residence is designed to maximise comfort and functionality, providing ample room for family living, relaxation, and entertaining. Whether you're downsizing, relocating, or seeking a dynamic lifestyle close to loved ones, this development is your gateway to worry-free, contemporary living in one of Ormiston's most sought-after neighbourhoods.

TOWNHOUSE 1: 162.5m² | 3 BED | 2.5 BATH | 1 STUDY/MEDIA | 2 CAR
 TOWNHOUSE 2: 162.5m² | 3 BED | 2.5 BATH | 1 STUDY/MEDIA | 2 CAR
 TOWNHOUSE 3: 162.5m² | 3 BED | 2.5 BATH | 1 STUDY/MEDIA | 2 CAR
 TOWNHOUSE 4: 162.5m² | 3 BED | 2.5 BATH | 1 STUDY/MEDIA | 2 CAR
 TOWNHOUSE 5: 185.5m² | 4 BED | 2.5 BATH | 2 STUDY/MEDIA | 2 CAR
 TOWNHOUSE 6: 185.5m² | 4 BED | 2.5 BATH | 2 STUDY/MEDIA | 2 CAR

Ideally located, these townhouses are just 10 minutes from the prestigious Ormiston College, and Ormiston Train Station.

And being just moments to Cleveland's restaurant and shopping precinct, everything is in easy reach.

Bus and train transport, shops and amenities, Raby Bay Harbour and local walking trails are all nearby.

And you're just minutes to Raby Bay beach, Cleveland Point and the Bayside's best fishing and boating.

4 BED | 2 BATH | 2 CAR

PRICE:

Please Contact For Price

OPEN FOR INSPECTION:

N/A

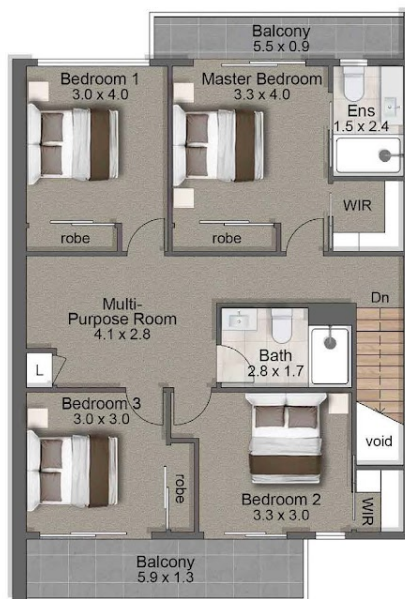


Ben Tafolo

0419260719

tafolo@atrealty.com.au

teamtafolo.com.au



TOWNHOUSE THREE

4 | 2.5 | 2

Internal Area:	139 m ²
External Covered Area:	17 m ²
Garage:	34 m ²
Private Open Space:	14 m ²
Total Area:	204 m ²

Plans, layouts and drawings are intended as a guide and for illustrative purposes only and with all areas and dimensions being estimates only for purposes of reference and subject to the terms and conditions of the Disclosure Statement and Contract of Sale. All areas and dimensions are subject to change and final survey on completion of construction. Neither the Seller, or the Sales Agent or any of their employees or agents accept any liability whatsoever for any errors or omissions. No representations or warranties of any nature whatsoever are given or intended and any person using this information should always rely on their own enquiries and seek independent advice. The Seller reserves the right to amend all plans, layouts and drawings at any time in its sole and absolute discretion. Furniture is shown for illustrative purposes only and is not included.

Disclaimer: Please note this floor plan is for marketing purposes and is to be used as a guide only. All dimensions are estimates only and may not be exact measurements.