



# FOR SALE

## LUXURY LIVING WITH ENDLESS SEA VIEWS IN A HOTEL-STYLE COMPLEX

Ever imagined living in a place that feels like a holiday every day? As part of the Oaks Elan Hotel complex, this apartment offers exclusive access to hotel-quality amenities, including a pool, gym, and air-conditioned reception. The ground floor features a restaurant for added convenience.

Perfectly positioned near the city centre, you're within walking distance of popular cafés, restaurants, nightlife, and the soon-to-open Charles Darwin University city campus. Thoughtfully designed, the apartment features a full-sized kitchen, open-plan living, and breathtaking views visible from most areas. The master bedroom boasts an ensuite, while the second bedroom connects to a two-way bathroom, offering flexible living arrangements.

### Property Highlights:

- Stone benchtops and full-sized kitchen
- Spacious balcony with sunrise views
- Ensuite in the master bedroom
- Access to hotel-standard pool and gym
- On-site restaurant and secure parking
- Prime city location

### Additional Information:

- Year Built: 2014
- Status: Tenanted
- Current Rent: \$2,513.33 per month
- Lessee: Oaks Darwin Elan Hotel
- Body Corp Manager: Darwin Body Corporate Management
- Body Corporate Fees (approx.): \$1,650 per quarter
- Darwin City Council Rates (approx.): \$428 per quarter

Contact me today at 0417508800 or [nicolewheeler@atrealty.com.au](mailto:nicolewheeler@atrealty.com.au) to schedule a private viewing and experience the beauty and convenience of this property for yourself.

Make an Offer: <https://myatrealty.com/v2/properties/160017/listings/67462/submitofferform>

2 BED | 2 BATH | 1 CAR

### PRICE:

OVER \$480,000

### OPEN FOR INSPECTION:

Jun 28 at 1:00pm - 1:15pm

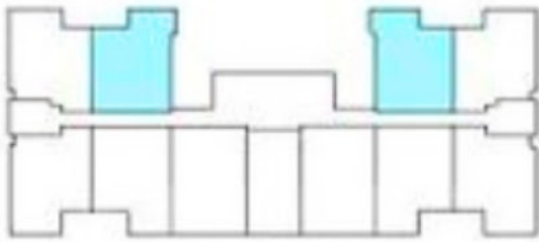


**Nicole Wheeler**

**0417508800**

[nicolewheeler@atrealty.com.au](mailto:nicolewheeler@atrealty.com.au)

[www.atrealty.com.au](http://www.atrealty.com.au)



PLANS SHOWN ONLY INDICATIVE OF LAYOUT

Disclaimer: Please note this floor plan is for marketing purposes and is to be used as a guide only. All dimensions are estimates only and may not be exact measurements.