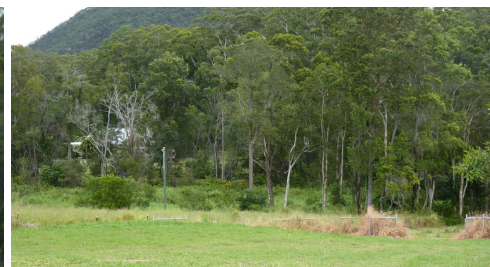


15 LLOYD STREET BEERWAH



FOR SALE

UNBELIEVABLE VALUE!!! "CHEAPER THAN THE DEVELOPER...WOW!"

PRICE REDUCTION.....Be Quick!!! This Block Won't Last Long At This Price.....

- * 709m2
- * 23 m frontage
- * Neighbour on one side only
- * Little traffic - end of street location
- * Central Beerwah (between shops and school)

Nestled within the tranquillity of Beerwah, this charming residential block brings together the best of peaceful living and easy going lifestyle, yet within walking distance to everything you need. Mountain views, parklands and endless walking tracks nearby.

Easy access to public transport, shopping, schools and a wealth of sporting and recreational amenities, Lushlands Estate makes the perfect choice for those seeking a well-balanced life in a beautifully established suburb.

Positioned in a prime position, this 704sqm easy building block is waiting for your dream home. With only one adjoining neighbour and a stunning aspect over bushland and mountains this stunning block is positioned in a desirable no through road, surrounded by quality homes.

With easy access to the Steve Irwin Way and the Bruce Highway, this central location will satisfy the whole family. Whether you wish a trip to Brisbane or a day at the beach, the choice is yours.

Be quick to not miss out on the last available block in this glorious estate.

Call Suzie Tay M > 0400 880 932 Email > suzie@atrealty.com.au and Denise Pinwill M > 0410 649 905 E > denise@atrealty.com.au for any additional information.

0 BED | 0 BATH | 0 CAR

PRICE:
\$205,000

OPEN FOR INSPECTION:
N/A



Suzie Smith
0400880932
suzie@atrealty.com.au
www.atrealty.com.au