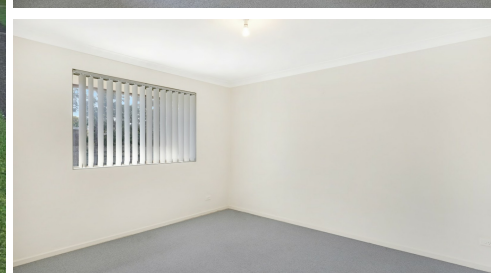


# 11/3 WHITFIELD PLACE LAKE ILLAWARRA



## FOR LEASE

### SPACIOUS AND CONVENIENT TWO-BEDROOM UNIT – PERFECTLY LOCATED

This charming and spacious apartment is ideally situated just moments from local schools, shops, and public transport, offering the perfect balance of convenience and comfort.

Step inside and be greeted by an open-plan living space that flows effortlessly onto your own private side balcony — an ideal spot to unwind or entertain guests.

#### Features:

- Spacious open-plan lounge and dining area, perfect for both relaxation and socializing
- Modern kitchen with a convenient breakfast bar, ideal for quick meals or casual gatherings
- Two generously sized bedrooms, both featuring built-in robes for plenty of storage
- Well-maintained bathroom with a separate shower and bath for ultimate relaxation
- Single carport

With its inviting layout and unbeatable location, this apartment offers a fantastic opportunity to enjoy easy living in a highly sought-after area.

#### TO INSPECT OR APPLY:

It's important to register your interest in any upcoming and advertised open homes or inspections. Failing to register may result in not being informed of any unforeseen or unplanned changes to inspection times. To register (or apply) for this property please click on the get in touch button and send your details to our agency. You'll receive an email back with instructions on how to register and apply via our website and booking service.

We do NOT accept 1Form, Ignite, 2Apply or any other online type of tenancy application form. You must apply using the the provided application link sent to you once you enquire.

2 BED | 1 BATH | 1 CAR

#### PRICE:

\$450

#### OPEN FOR INSPECTION:

N/A



**Vicky Dukleski**

**0422605833**

[vicky.dyvineproperty@atrealty.com.au](mailto:vicky.dyvineproperty@atrealty.com.au)

[www.atrealty.com.au](http://www.atrealty.com.au)