

FOR SALE

GENEROUS FAMILY LIVING IN A PEACEFUL CAMBRIDGE ESTATE COURT

Set in the heart of the desirable Cambridge Estate, this well-maintained home offers the perfect balance of space, comfort, and modern lifestyle. Whether you're a growing family, entertainer, or smart investor, this standout property has something for everyone.

Step inside to a bright and airy interior, where high ceilings and wide windows create a welcoming sense of space. The open-plan layout flows effortlessly from the generous living areas to the dining and kitchen area, making everyday living and entertaining a breeze. Timber floors and a neutral palette give the home a warm, stylish feel, while multiple living spaces allow room for the whole family to spread out and enjoy.

The spacious master bedroom is privately positioned and features large windows, a ceiling fan, walk-in robe, and a modern ensuite. Additional bedrooms are filled with natural light and fitted with built-in robes - perfect for kids, guests, or even a home office. The family bathroom is functional and fresh, with a separate shower and bathtub for added convenience.

Love to entertain? Step outside to the expansive undercover BBQ area, perfect for year-round hosting. The beautifully landscaped backyard offers plenty of space for kids and pets to play, with multiple zones to relax or unwind.

Additional features include ducted heating, split system cooling, ceiling fans throughout, a double garage, extra carport, and ample storage solutions throughout the home.

Located within the coveted Cambridge Primary School zone and just moments from Pacific Werribee, parks, public transport, and key amenities, this home offers unbeatable convenience in a peaceful, family-friendly setting.

Don't miss out on this fantastic opportunity. Secure your place in Cambridge Estate today!

4 BED | 2 BATH | 3 CAR

PRICE:

\$730,000 - \$770,000

OPEN FOR INSPECTION:

N/A

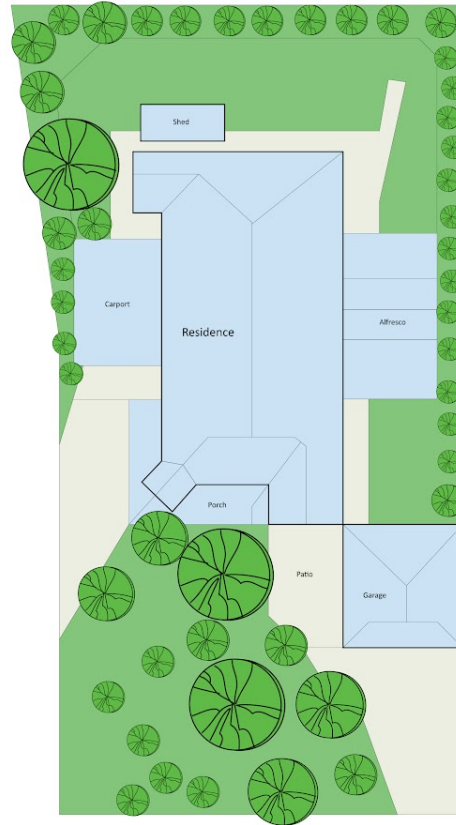
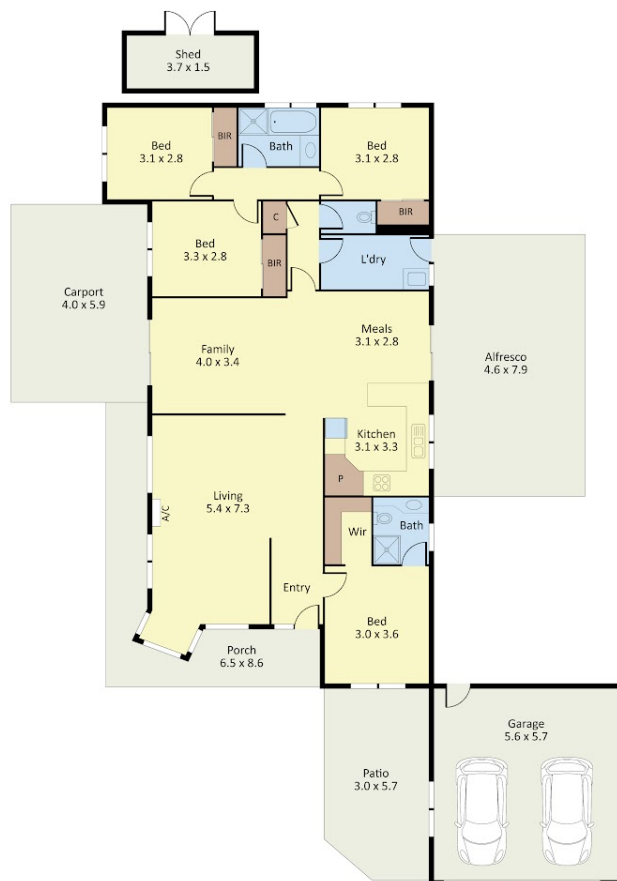


Samuel Hogan

0401315234

samuel@atrealty.com.au

www.atrealty.com.au



6 McVeigh Place, Hoppers Crossing

Dimensions are approximate and for illustrative purposes only



Disclaimer: Please note this floor plan is for marketing purposes and is to be used as a guide only. All dimensions are estimates only and may not be exact measurements.