



FOR SALE

LEAFY, AFFORDABLE AND CLOSE TO FREO – R60

* DUE TO AN OVERWHELMING AMOUNT OF BUYER ENQUIRIES WE WILL BE ADDING ONE MORE HOME OPEN THIS TUESDAY 15th OF APRIL 4PM - 4:30PM SEE YOU THERE!! *

Superbly positioned overlooking the lush green Tempest Park, this fully renovated three-bedroom brick and tile home offers a unique blend of classic 1960s character and modern comfort. The generous block size of 728m2 zoned R60 presents a multitude of exciting possibilities for future expansion, whether you wish to undertake renovations, add an extension or subdivide (STCA).

Features include:

- Immaculately maintained original Jarrah hardwood floorboards, original sash windows & high ceilings throughout
- Master bedroom King size
- Bedrooms 2 & 3 Double size
- Spacious bathroom tastefully renovated, with shower over bath & toilet
- Open plan living/dining/kitchen flooded with natural light, airy and open, featuring a cozy ornate fireplace
- Practical and well-equipped kitchen with ample bench space, 4 burner gas cooking and rangehood, electric oven, double sink and plenty of storage.
- Spacious renovated laundry
- Split system air-conditioning unit in lounge, as well as gas bayonet.
- Welcoming front porch, perfect for your morning coffee with a view over the park
- Roller blinds throughout
- Gas instantaneous hot water system
- Single Colourbond carport
- Sprawling split level backyard, with large garden shed
- Retic to the front yard off mains water
- Green Title 728m2 block size, 94m2 build size
- Built in 1965
- Council Rates- \$1760.27 FY 2024-25 Water Rates- \$950.04 FY 2023-24
- Currently tenanted until 08/08/2025

3 BED | 1 BATH | 1 CAR

PRICE:

OFFERS FROM \$875,000

OPEN FOR INSPECTION:

N/A

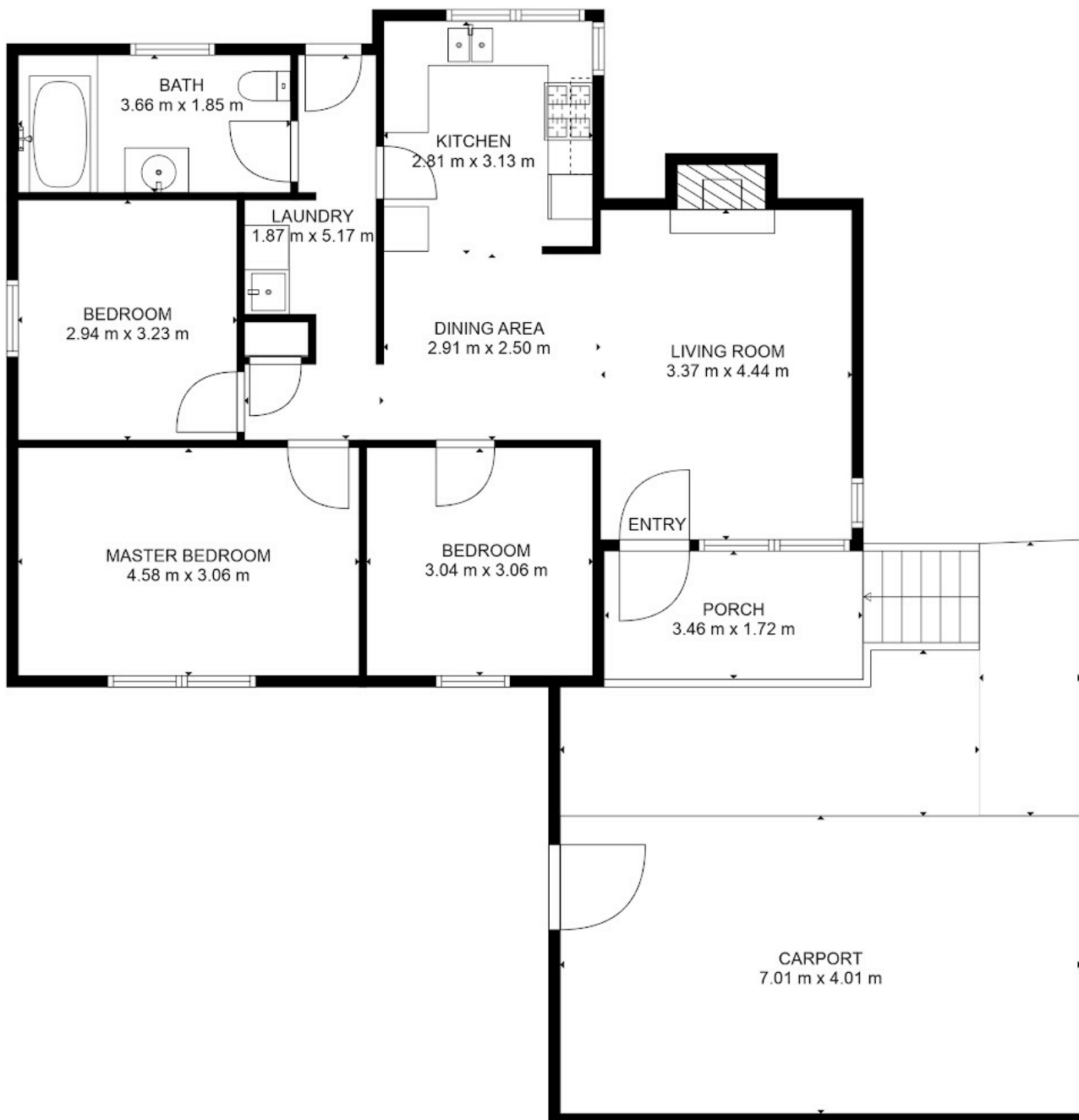


Jill Groves

0408765240

jillgroves@atrealty.com.au

www.atrealty.com.au



Disclaimer: Please note this floor plan is for marketing purposes and is to be used as a guide only. All dimensions are estimates only and may not be exact measurements.

@realty 10 Stephano Way, Coolbellup

Jill Groves
0408765240

jillgroves@atrealty.com.au

www.atrealty.com.au

Not to scale • All measurements are approximate • Drawn for presentation purposes only

@realty