

FOR SALE

1-BEDROOM MODERN CITY APARTMENT WITH SEA VIEWS & POOL ACCESS

Positioned in the heart of Darwin City, this modern one-bedroom apartment offers a lifestyle of convenience and low-maintenance living. Situated on the 10th floor of a sought-after complex, the apartment captures sweeping city and sea views and is just moments from shops, restaurants, and the waterfront.

Whether you're looking to expand your investment portfolio or secure a well-located home, this tenanted property combines style and functionality with resort-style amenities. The complex features a swimming pool for residents to enjoy, and the apartment itself is designed for effortless urban living.

Property Highlights:

- One spacious bedroom with built-in storage
- One modern bathroom
- Open-plan living area with city and sea views
- Modern kitchen with ample cabinetry and bench space
- Secure car space
- Swimming pool in the complex
- Easy-care, low-maintenance design

A fantastic find in an unbeatable location, this apartment is a smart choice for investors or professionals seeking a vibrant city lifestyle.

Additional Information:

- Year Built: 2012
- Status: Tenanted – ideal for investors seeking immediate rental income
- Current Rent: \$440 per week
- Lease Ending: 28/03/2026
- Body Corp Manager: Whittles Body Corporate
- BC ADMIN Fund (approx.): \$2282 per quarter
- BC SINKING Fund (approx.): \$361 per quarter
- Total Body Corporate Fees (approx.): \$2650 per quarter
- Darwin City Council Rates (approx.): \$1715 per year

1 BED | 1 BATH | 1 CAR

PRICE:

OVER \$300,000

OPEN FOR INSPECTION:

N/A

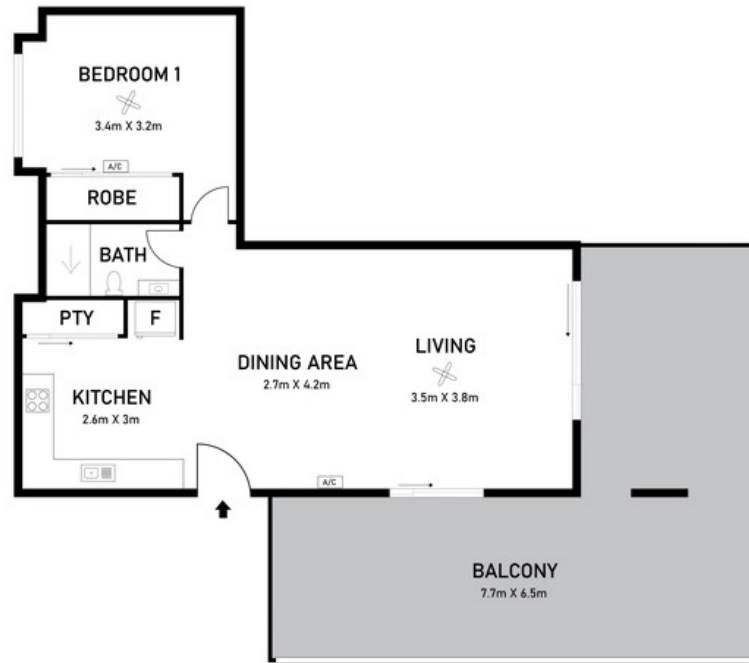


Nicole Wheeler

0417508800

nicolewheeler@atrealty.com.au

www.atrealty.com.au



Scale in metres. Indicative only. Dimensions are approximately. All information contained here in is gathered from source we believe to be reliable. However we cannot guarantee its accuracy and interested persons should rely on their own enquiries

1006/3-5 Gardiner Street, Darwin City

Disclaimer: Please note this floor plan is for marketing purposes and is to be used as a guide only. All dimensions are estimates only and may not be exact measurements.