

3 FOR FREE*
SPECIAL RENTAL OFFER

We will, we will rock your value.

FOR RENT FREE
letting fee
for first time

FOR RENT FREE
three months
management
for first tenancy

FOR RENT FREE
advertising
for first time

* Terms and Conditions apply, For a limited time only

Jeremy Yuen | 0412 406 039
jeremy@atrealty.com.au

Experience,
Dedication
& Results

3 FOR FREE*

We will, we will rock your value.

FOR SALE FROM 1% low rate

FOR SALE FREE internet advertising

FOR SALE FREE valuation

* Terms and Conditions apply, For a limited time only

Experience,
Dedication
& Results

FOR LEASE

LEASED BY JEREMY ANOTHER ONE PLEASE

Discover sophisticated apartment living in the prestigious Sanctuary complex, where contemporary design meets waterfront tranquility. This stunning 2-bedroom, 2-bathroom apartment in Wentworth Point offers an enviable lifestyle just 13km from Sydney's CBD.

Step into a world of modern convenience and comfort in this well-appointed apartment. Both bedrooms are generously proportioned, complemented by two pristine bathrooms that enhance everyday living. The secure garage provides peace of mind for vehicle storage, while the complex itself represents the pinnacle of urban living.

The Sanctuary complex exemplifies premium apartment living, situated in one of Sydney's most rapidly evolving waterfront suburbs. Residents enjoy easy access to an array of lifestyle amenities that make everyday living a pleasure.

Your new neighborhood offers an impressive selection of recreational opportunities:

- Extensive cycle paths through Sydney Olympic Parklands for cycling, running, and walking
- Access to indoor heated pool, outdoor recreational pool, gym, and tennis courts
- Kayaking, rowing, and dragon boating activities in Homebush Bay
- Beautiful bay run and cycle loop around Homebush Bay via the Bennelong Bridge

Shopping and dining are at your doorstep with Marina Square shopping centre offering:

- Coles supermarket for convenient grocery shopping
- Over 40 specialty shops
- Variety of cafes and restaurants
- Essential services and retail options

The location provides excellent connectivity to Sydney's key destinations:

- Sydney Olympic Park ferry wharf offering services to Circular Quay, Darling Harbour, and Parramatta
- Regular bus services including routes 526 (Burwood to Rhodes) and 533 (Chatswood to Olympic Park)
- Easy access to Rhodes shopping and train station via the Bennelong Bridge
- Convenient connection to Sydney Olympic Park's world-class sporting and entertainment facilities

2 BED | 2 BATH | 1 CAR

PRICE:

\$1,025 per week

OPEN FOR INSPECTION:

N/A

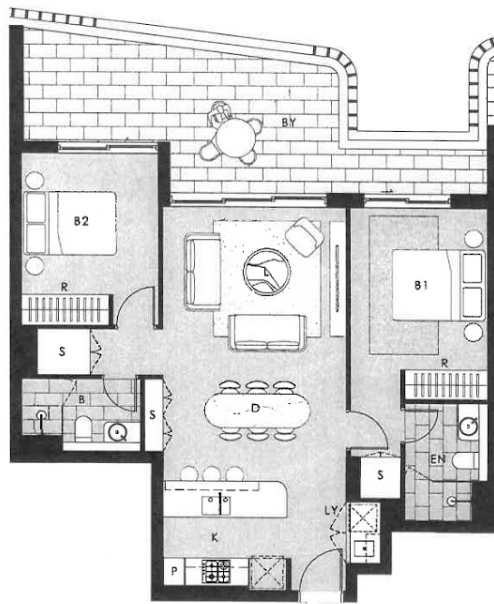


Jeremy Yuen

0412406039

jeremy@atrealty.com.au

www.atrealty.com.au




SANCTUARY
 WENTWORTH POINT
GLADE

APARTMENT 0802

2 BED | 2 BATH | 2 CAR
 INTERNAL AREA 74 m²
 EXTERNAL AREA 22 m²
 TOTAL AREA 96 m²



KEY:

E	ENTRY	B1	BEDROOM
L	LIVING	B2	BEDROOM
D	DINING	R	BATHROOM
K	KITCHEN	IN	INSET
P	PANTRY	P	PANTRY
EN	ENTRY	J	STAIRS
LY	LINEN	EN	ENTRY
ST	STUDY	BS	BALCONY
BB	BATHROOM	TC	TERRACE
UT	UTILITIES	B&C	B&C

1300 726 288
www.sanctuaryapartments.com.au



Revision E 10.02.2022

Disclaimer: The particulars are set out as a general outline for the guidance of intending purchasers and do not constitute a contract. All descriptions, dimensions, references to conditions and necessary permissions for use and other details are given in good faith and are believed to be correct, but any intending purchaser should not rely on them as statements or representations of facts, but must satisfy themselves by inspection or otherwise to the correctness of each item, and where necessary seek advice. No third party supplier or their agents has any authority to make or give any representations or warranty in relation to this property. *External areas may be larger for courtyard apartments. Refer to the detailed area schedule.

Disclaimer: Please note this floor plan is for marketing purposes and is to be used as a guide only. All dimensions are estimates only and may not be exact measurements.

Jeremy Yuen
 0412406039
jeremy@atrealty.com.au
www.atrealty.com.au

