



# FOR SALE

## LUXURIOUS BEACHFRONT LIVING IN SPECTACULAR HERVEY BAY

Breathtaking bay views await in this prestigious beachfront apartment, perfectly positioned along Hervey Bay's stunning Esplanade in Pialba. This exceptional three-bedroom residence offers an enviable coastal lifestyle where luxury meets convenience, combining sophisticated design with the relaxed ambiance of seaside living.

Wake up to spectacular ocean vistas in this third-floor haven, where the gentle sea breeze and natural light flow effortlessly through the thoughtfully designed living spaces. The master suite features a private ensuite and built-in wardrobes, while two additional bedrooms provide comfortable accommodation for family members or guests.

Contemporary comfort meets resort-style amenities in this remarkable complex:

- Secure two-car garage with additional visitor parking
- Fully equipped gym for active lifestyles
- Sparkling in-ground swimming pool
- Multiple entertainment areas including private courtyard and balcony
- Comprehensive climate control with ducted heating and cooling

The apartment showcases modern conveniences including a well-appointed kitchen with dishwasher, broadband internet connectivity, and extensive storage solutions. The seamless indoor-outdoor flow creates perfect spaces for entertaining, whether you're hosting intimate gatherings or larger social events.

Living in Pialba puts you at the heart of Hervey Bay's vibrant central business district, where everything you need is within easy reach. The location offers the perfect balance of seaside serenity and urban convenience, with the Esplanade's walking paths, parks, and beaches right at your doorstep.

The local community provides an abundance of amenities and attractions:

- Walking distance to shopping facilities and dining options
- Close proximity to Hervey Bay Library and Community Centre
- Easy access to medical facilities and professional services
- Regular local events and markets along the Esplanade

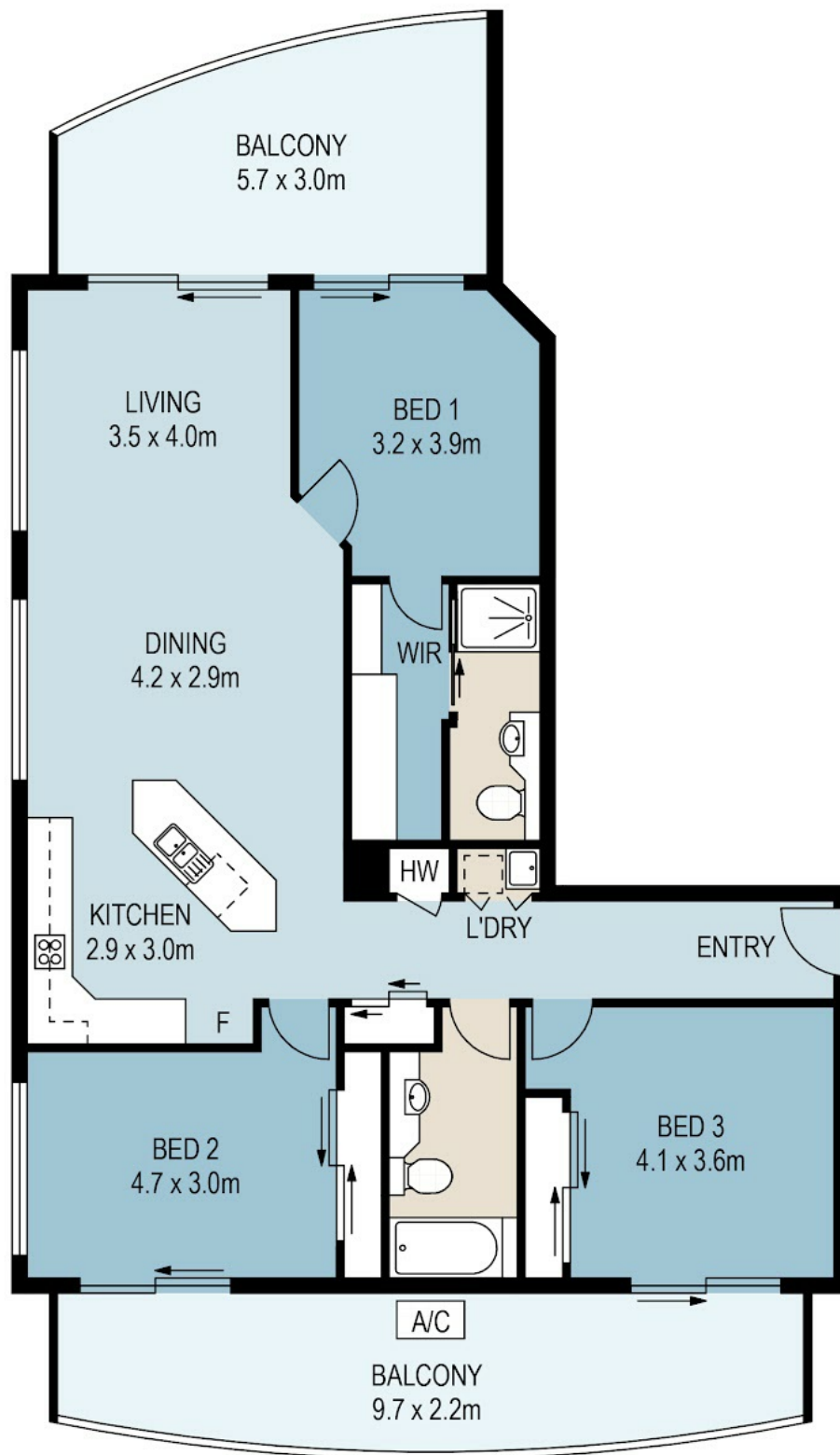
**3 BED | 2 BATH | 2 CAR**

**PRICE:**  
\$1,095,000

**OPEN FOR INSPECTION:**  
N/A



**Paul Capper**  
**0466602803**  
[paul.capper@atrealty.com.au](mailto:paul.capper@atrealty.com.au)  
[www.atrealty.com.au](http://www.atrealty.com.au)



INTERNAL	110sqm
EXTERNAL	39.9sqm
TOTAL	149.9sqm

Disclaimer: Please note this floor plan is for marketing purposes and is to be used as a guide only. All dimensions are estimates only and may not be exact measurements.

PLANS SHOWN ONLY INDICATIVE OF LAYOUT. DIMENSIONS ARE APPROXIMATE.

All information contained herein is gathered from sources we believe to be reliable. However we cannot guarantee its accuracy and interested persons should rely on their own enquiries.

CREATED BY PROPERTY PIXEL  
WWW.PROPERTY-PIXEL.COM.AU