

FOR SALE

BATHURST CBD BEAUTIFULLY RENOVATED COTTAGE

CHARM & CHARACTER MEETS MODERN-DAY CONVENIENCE

3 -4 BED / 1 BATH / 3 CAR / 758m2

Oozing with charm, 172 Seymour St is a hidden gem on the edge of Bathurst CBD. Located directly across the road from the recently renovated Centennial Park children's playground, the home would make a lovely family residence, downsizer, or Airbnb. It is a centrally located, tastefully renovated Victorian-era brick cottage.

The front of the home has a lovely front veranda which overlooks Centennial Parkland. A central hallway connects three oversized bedrooms at the front of the home to the first of two large living areas. The home preserves ornate original features such as fireplaces and ornate ceilings. It also has some stunning light pieces and stained-glass windows.

The rear extension has a large living area flowing to a modern open-plan kitchen with an island bench, a study or small bedroom, and a large laundry with a convenient second toilet. The laundry has the space to add a shower and vanity, enabling the home to have a second bathroom if desired.

Outside, you will find a large gated backyard ideal for children or pets. The rear of the property has a single lock-up garage with roller door, plus a large iron storage shed which would also fit more vehicles.

LOCALITY:

Two Blocks to Keppel Street cafes/library/hotels/brewery, and boutique shopping
Five-minute walk to Bathurst Railway Station
Across the road from the newly redeveloped Centennial Park
Ten-minute walk to Bathurst CBD.
Two blocks from St Stanislaus College.

HEATING / COOLING. Ceiling ducted gas heating.

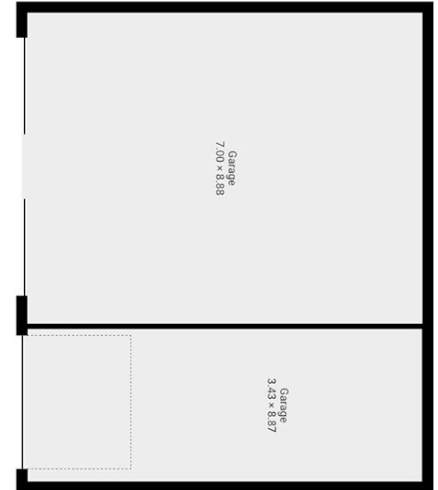
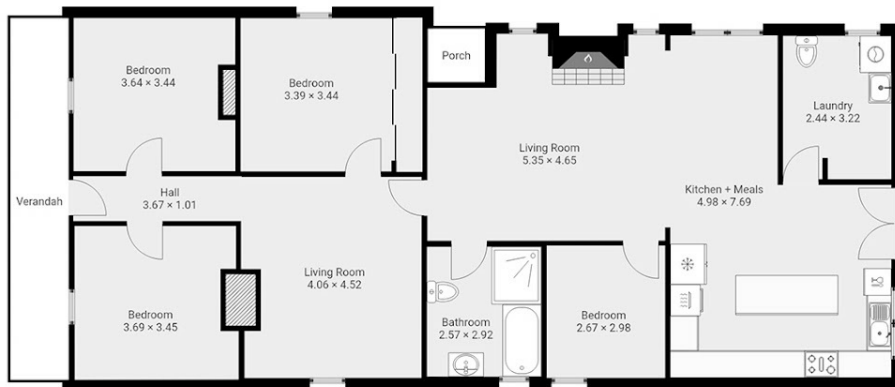
4 BED | 1 BATH | 3 CAR

PRICE:
\$795,000

OPEN FOR INSPECTION:
N/A



Mark Sullivan
0429954990
sully@atrealty.com.au
www.atrealty.com.au



Disclaimer: Floor plan dimensions are approximate. Indicative only. All information contained herein is gathered from sources we believe to be reliable, however, are to be used as a guide only. We cannot guarantee its accuracy and interested persons should rely on their own enquiries.

Disclaimer: Please note this floor plan is for marketing purposes and is to be used as a guide only. All dimensions are estimates only and may not be exact measurements.