

N904/3-5 SEA RUSH ST, WENTWORTH POINT, NSW, 2127

3 FOR FREE*
SPECIAL RENTAL OFFER

We will, we will rock your value.

FOR RENT FREE letting fee for first time

FOR RENT FREE three months management for first tenancy

FOR RENT FREE advertising for first time

* Terms and Conditions apply, For a limited time only

Jeremy Yuen | 0412 406 039
jeremy@atrealty.com.au

Experience, Dedication & Results

3 FOR FREE*

We will, we will rock your value.

FOR SALE FROM 1% low rate

FOR SALE FREE internet advertising

FOR SALE FREE valuation

* Terms and Conditions apply, For a limited time only

Experience, Dedication & Results

FOR LEASE

LEASED BY JEREMY ANOTHER ONE PLEASE 0412406039

Discover modern waterfront living in the prestigious Laguna complex at Wentworth Point, where urban convenience meets serene waterside tranquillity. This sophisticated two-bedroom apartment represents the epitome of contemporary Sydney living, offering an enviable lifestyle opportunity in one of the area's most sought-after developments.

Step into a thoughtfully designed residence where space and style harmoniously blend. The apartment features two well-appointed bedrooms complemented by two designer bathrooms, ensuring comfort and convenience for residents and guests alike. The secure parking garage provides peace of mind in this rapidly evolving suburb.

Wentworth Point has transformed into a vibrant waterfront community, perfectly positioned just 13 kilometres west of Sydney's CBD. The suburb offers an impressive array of lifestyle amenities right at your doorstep:

- Marina Square shopping centre featuring Coles supermarket and over 40 specialty stores
- Indoor heated pool, outdoor recreational pool, gym, and tennis courts at the local recreation club
- Extensive waterfront cycling and walking paths connecting to the Homebush Bay circuit
- Beautiful parklands and green spaces perfect for outdoor activities
- Water sports opportunities including kayaking, rowing, and dragon boating in Homebush Bay

The location offers exceptional connectivity with multiple transport options:

- Sydney Olympic Park ferry wharf providing direct services to Circular Quay, Darling Harbour, and Parramatta
- Regular bus services including routes 526 (Burwood to Rhodes) and 533 (Chatswood to Olympic Park)
- Easy access to Rhodes Station via the Bennelong Bridge
- Convenient connection to Sydney Olympic Park's extensive sporting and entertainment facilities

Education options are expanding with the area's growth, highlighted by the recently opened

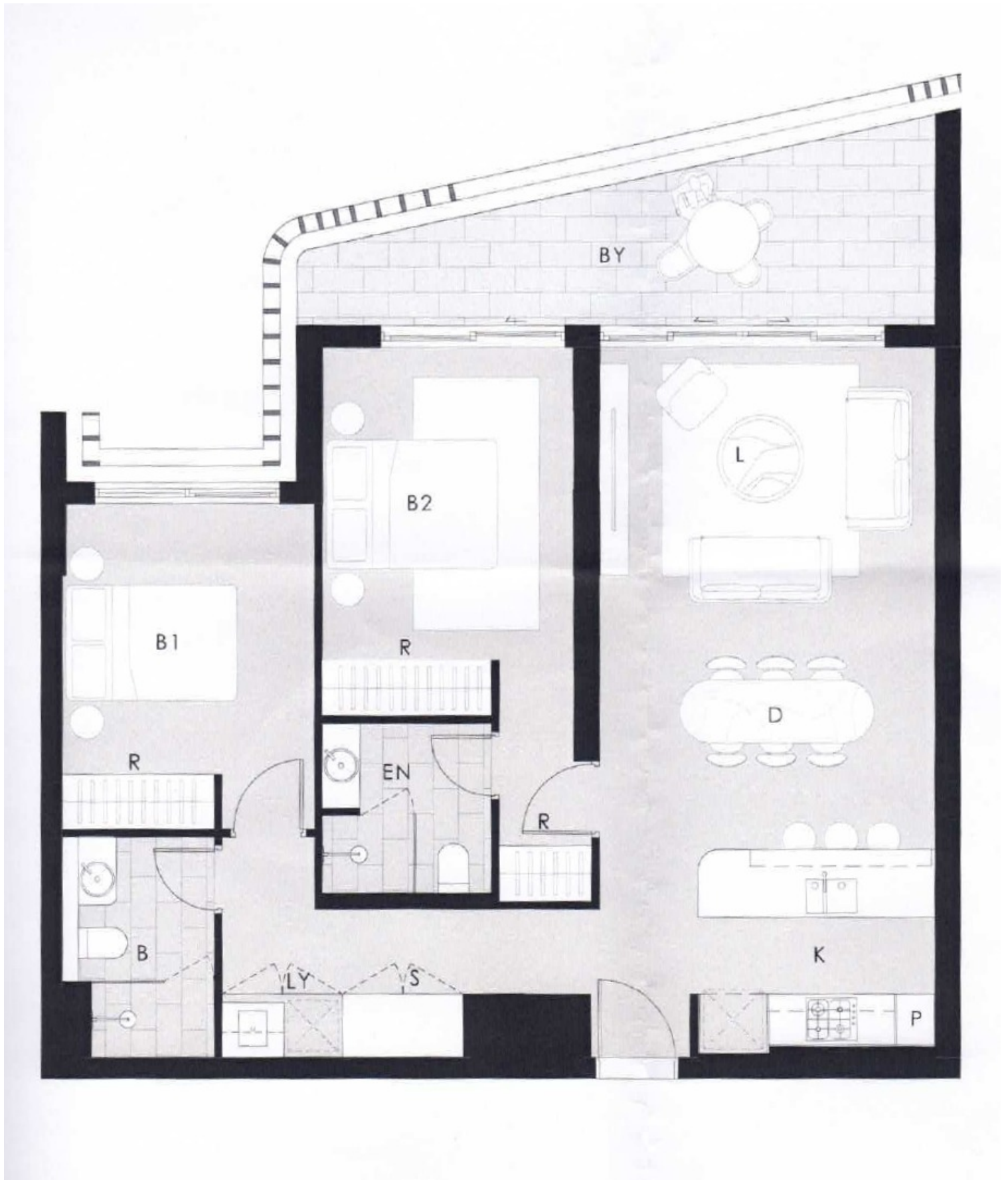
2 BED | 2 BATH | 2 CAR

PRICE:
\$1,075 per week

OPEN FOR INSPECTION:
N/A



Jeremy Yuen
0412406039
jeremy@atrealty.com.au
www.atrealty.com.au



Disclaimer: Please note this floor plan is for marketing purposes and is to be used as a guide only. All dimensions are estimates only and may not be exact measurements.