



FOR SALE

WELCOME TO YOUR NEW HOME IN THE PRESTIGIOUS PACIFIC HARBOUR GOLF COURSE ESTATE.

This gorgeous well-proportioned 4 bedroom family home – simply put - it just works! The home accommodates your family with ease, having private spaces, and getaway corners – with the fourth bedroom perfectly placed for a home office. A modern chef's kitchen with quality appliances, a walk-in pantry and spacious stone bench tops connects seamlessly to the alfresco entertaining area that has a firepit and a layered deck for cold winter nights. As a bonus you have a separate living / media room for quiet reflection or late night viewing.

This home brings it all together in the quiet surroundings of the Pacific Harbour golf course estate!

Outstanding Features

- * Ducted climate control air conditioning
- * 13.2 Kw solar power
- * Gas cooktop
- * Quality appliances – rangehood, oven, dishwasher
- * Undercover BBQ area
- * Alfresco dining area
- * Tiered deck with firepit
- * 4 car accommodation
- * Side access

This home is the complete package – offering you an island lifestyle among the natural surroundings of the golf course!

A DEFINITE VIEWING for your inspections!

More features

- * Stainless steel fans throughout the home
- * Large master suite with walk-in robe and ensuite
- * Optional 4th bedroom or home office
- * Alfresco dining
- * Undercover BBQ area
- * Room for backyard cricket

4 BED | 2 BATH | 4 CAR

PRICE:

Offers over \$1.1million

OPEN FOR INSPECTION:

N/A

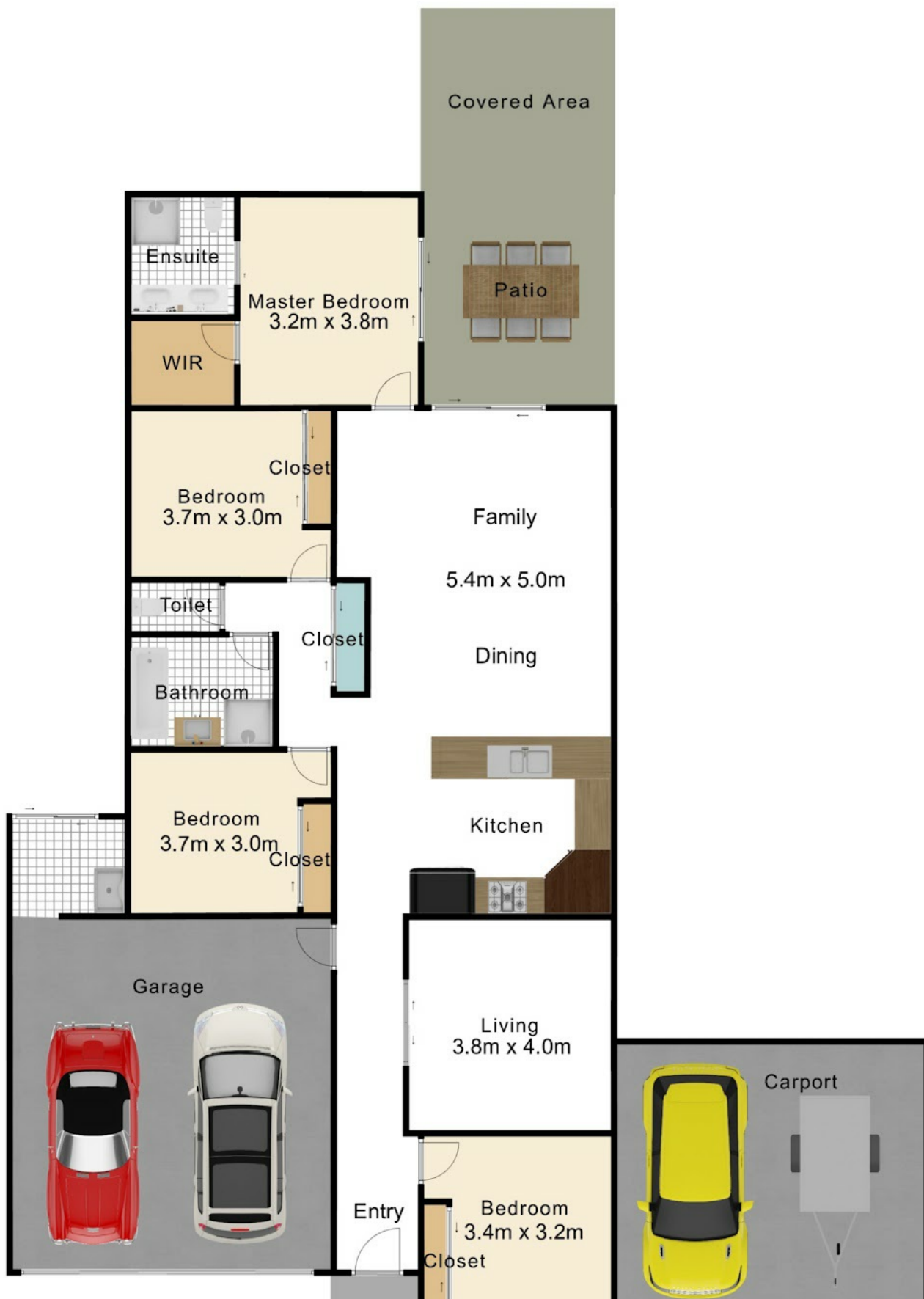


Elena Stevens

0415230521

elena@esre.com.au

www.esre.com.au



Disclaimer: Please note this floor plan is for marketing purposes and is to be used as a guide only. All dimensions are estimates only and may not be exact measurements.



While all care is taken to ensure accuracy this floorplan should be used as a guide only. Do not use measurements for furniture placement or any renovations to be done in the future.

Elena Stevens
0415230521
elena@esre.com.au
www.esre.com.au

