

FOR SALE

BRAND NEW CUSTOM-BUILT FAMILY HOME IN SOUGHT-AFTER LARA LAKES ESTATE.

Step into luxury with this brand new, architecturally designed home at 90 Wattlebird Drive, set in the prestigious Lara Lakes Estate. Impeccably finished with quality materials and a smart, spacious layout, this home delivers stylish family living in a peaceful, nature-rich setting.

Designed for both comfort and elegance, the home features multiple living zones including an open-plan meals, family, and media area, a separate lounge, and a formal living space at the front. Soaring 2.7 metre ceilings and laminated flooring throughout add a sense of openness and flow, while refrigerated heating and cooling ensures total climate control all year round.

The designer kitchen is the heart of the home, boasting 40mm Caesarstone benchtops, quality appliances, a walk-in pantry, and generous storage. It seamlessly connects to the living zones and out to the covered alfresco—perfect for entertaining.

The oversized master bedroom features a walk-in robe and sleek ensuite, while the three additional bedrooms include built-in robes and are serviced by a beautifully appointed central bathroom with 600x600 tiled finishes. There's also a walk-in linen closet, a separate toilet, and a well-equipped laundry.

Outdoors, enjoy easy-care landscaping and a covered alfresco area ideal for weekend BBQs or relaxing evenings. With a house size of approximately 31.5sqm on a 504m² block, there's space to live, entertain and grow.

Positioned in the heart of Lara Lakes Estate, you're just a short walk to scenic parks and wetlands, and moments from Lara Primary School, Lara Secondary College, and Lara Village Shopping Centre. The iconic You Yangs Regional Park is also just a short drive away, offering nature trails and adventure right at your doorstep.

All the hard work is done—just move in and enjoy a lifestyle of comfort and quality.

For further details or to schedule an inspection, please contact Sandeep Bhangu at 0432549151 or Abhi Tyagi at 0468 498 712.

4 BED | 2 BATH | 2 CAR

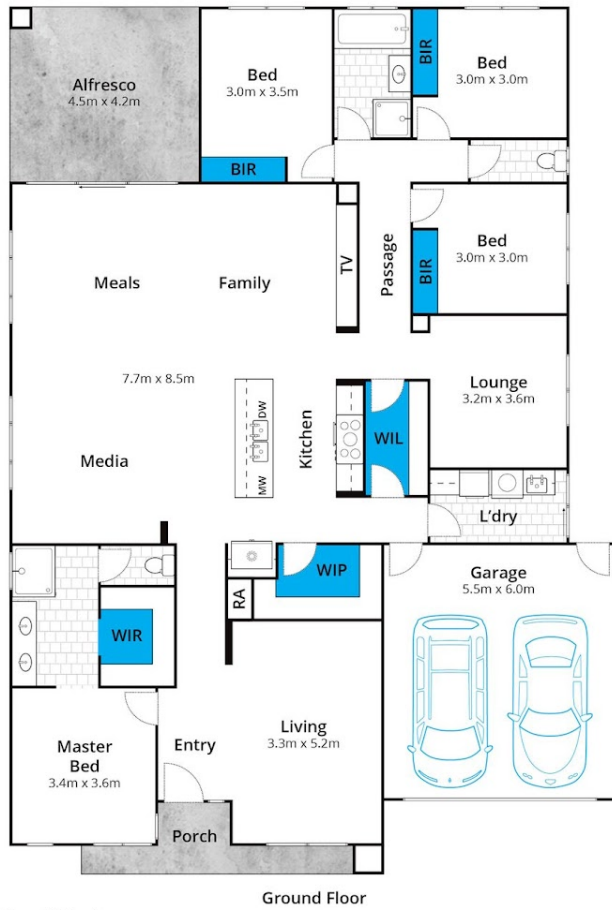
PRICE:
Contact Agent

OPEN FOR INSPECTION:
N/A

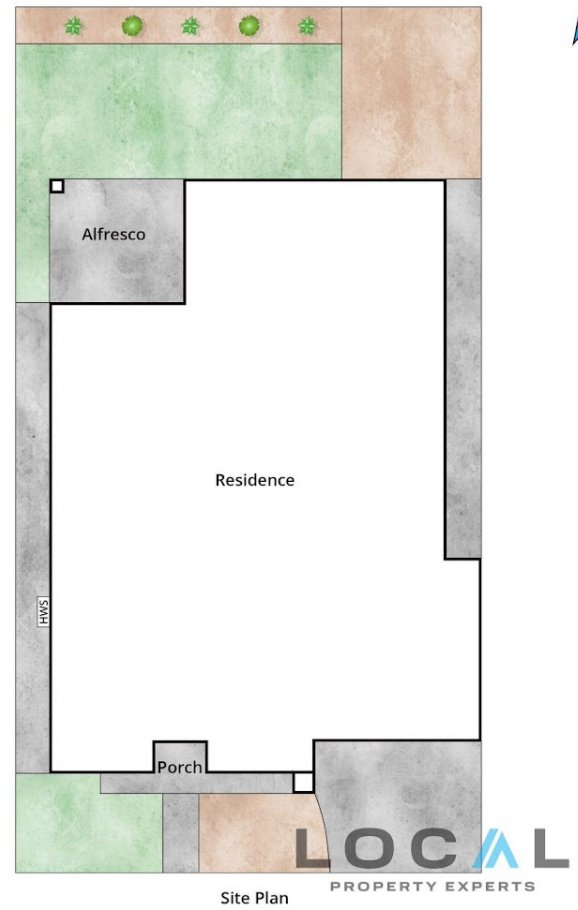


Sandeep Bhangu
0432549151

sandeep@localpropertyexperts.com.au
localpropertyexperts.com.au



Ground Floor



Site Plan

Approx House Area 243m²
Approx Land Area 504m²

Whilst bwr.com.au has made every attempt to ensure the accuracy of the floor plan contained here, measurements are approximate and no responsibility is taken for any error, omission, or mis-statement. This plan is for illustrative purposes only.

90 Wattlebird Drive, Lara



Disclaimer: Please note this floor plan is for marketing purposes and is to be used as a guide only. All dimensions are estimates only and may not be exact measurements.

Sandeep Bhangu
0432549151
sandeep@localpropertyexperts.com.au
localpropertyexperts.com.au

