



**SOLD**

## MODERN 2-BED HAVEN IN WESTMEAD'S MEDICAL PRECINCT!

Perfectly positioned opposite Coles and just moments from Westmead's thriving medical precinct, schools, train station, parks, and amenities, this top-floor, east-facing apartment offers comfort, convenience, and lifestyle.

### Key Features:

- Brand new timber flooring, new blinds & freshly painted throughout
- 2 bedrooms with mirrored built-ins | Master with ensuite
- Open-plan living with reverse-cycle A/C
- Sleek kitchen with gas cooking, stone benches & dishwasher
- Internal laundry with dryer
- Secure building with video intercom
- Underground car space | Secure access
- Bright top-floor position with easterly outlook

2 BED | 2 BATH | 1 CAR

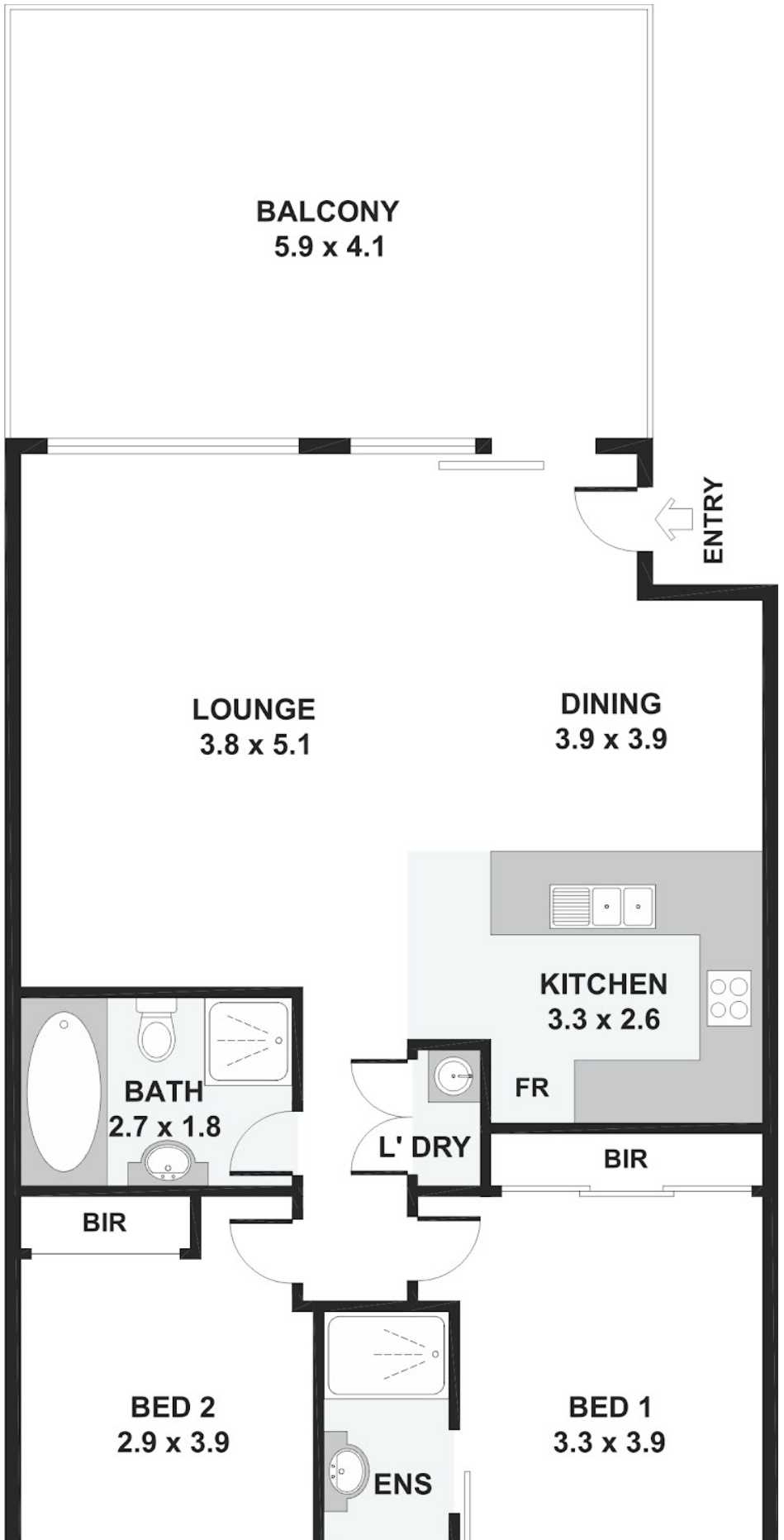
PRICE:  
\$575,000

OPEN FOR INSPECTION:  
N/A



**Leroy Magee**  
**0402963898**

leroymagee@hillsestategroup.com.au  
hillsestategroup.com.au



Disclaimer: Please note this floor plan is for marketing purposes and is to be used as a guide only. All dimensions are estimates only and may not be exact measurements.

NOT IN CORRECT POSITION

Leroy Magee  
0402963898  
leroymagee@hillsestategroup.com.au  
hillsestategroup.com.au

