

5 LLEW SUMMERS STREET,  
BELFAST, CHRISTCHURCH CITY,



**SOLD**

**MOVE-IN READY**

4  | 2  | 2 

4 BED / 2 BATH / 2 GGE  
Floor Area: 155 m2 Land Area: 360 m2

Deadline: 4pm, Tuesday 8 July 2025. (unless sold prior)

The alternative to building but with all the benefits! Just months old and backed by a Master Build Guarantee, this property offers peace of mind, comfort, and the convenience of low-maintenance living. Thoughtfully designed, this warm and inviting home features an inviting open plan layout plus four good sized bedrooms and two well-appointed bathrooms, perfect for growing families, professionals, or those seeking a future-proof investment. The master bedroom includes a private ensuite and walk-in wardrobe, creating a perfect retreat at the end of the day. The heart of the home is the open-plan kitchen, dining, and living area—a light-filled space designed for entertaining and family connection. The contemporary kitchen is well-equipped with quality appliances, ample storage, and stylish finishes, seamlessly connecting to the living area that invites relaxation and conversation. Enjoy all-year-round comfort with full double glazing, excellent insulation, and modern heating to keep your home warm and energy-efficient

Shady Attia | 02102169996 | [shady.attia@attiarealestate.com](mailto:shady.attia@attiarealestate.com) | [Attia Real Estate](#)

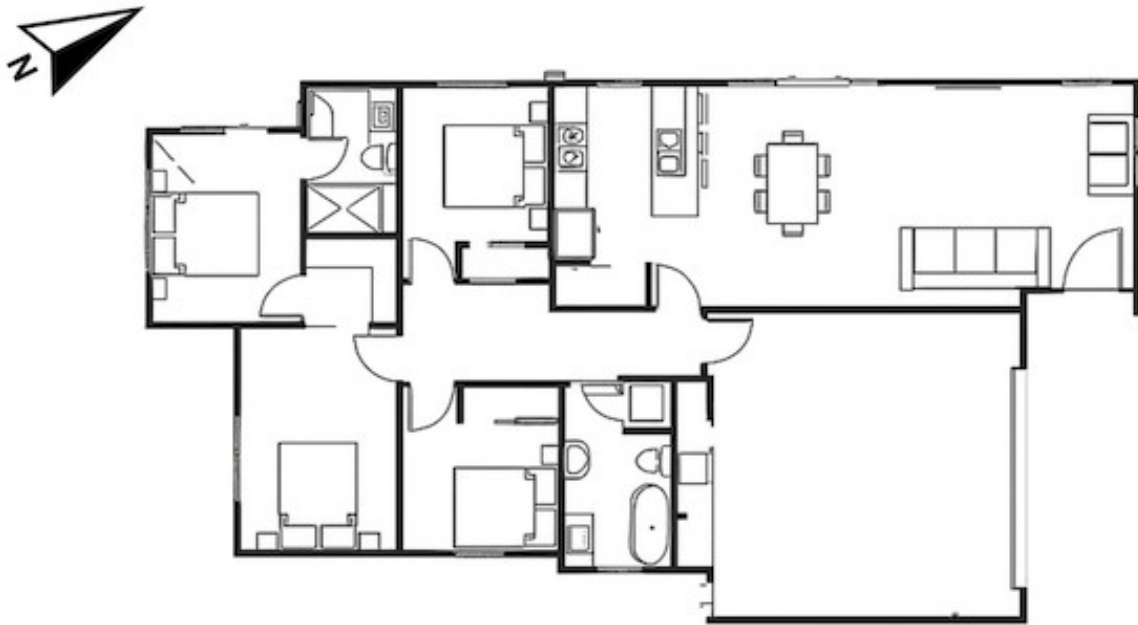
@realty Limited Licensed REA 2008

5 LLEW SUMMERS STREET,  
BELFAST, CHRISTCHURCH CITY, **CANTERBURY**



PRICE: \$790,000

OPEN FOR INSPECTION: N/A



Disclaimer: Whilst every effort has been made to ensure the accuracy of these particulars, no warranty is given by the vendor or the agent as to their accuracy. Interested parties should not rely on these particulars as representations of fact but must instead satisfy themselves by inspection or otherwise. (Rev NZ#1)

Shady Attia | 02102169996 | shady.attia@attiarealestate.com | [Attia Real Estate](#)