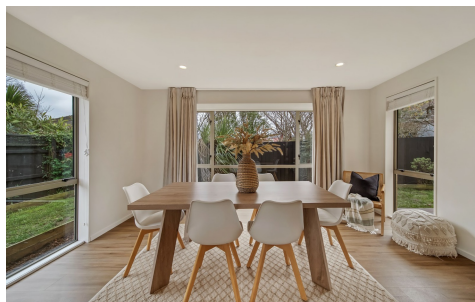


FLAT 2 /69 BOWENVALE AVENUE,
CASHMERE, CHRISTCHURCH CITY,



SOLD

ZONED EXCELLENCE!

3 | 1 | 2

3 BED / 1 BATH / 2 GGE

Floor Area: 150 m2 Land Area: 1/2 share 882 m2

AUCTION: 2pm, Wed 23 July 2025 @ ATTIA Real Estate, 62 Langdons Rd, Papanui, Christchurch (unless sold prior)

Tucked away in a private, fully fenced setting, this low-maintenance home offers the ideal combination of space, security, and convenience for families, first-home buyers, or anyone wanting to enjoy the vibrant Cashmere lifestyle.

Featuring three generously sized bedrooms, open-plan kitchen / dining area and a light-filled living room, this home is thoughtfully designed for everyday comfort and easy entertaining. A separate toilet, full bathroom, and dedicated laundry add practicality to the well-planned layout, while the double internal-access garage and two additional off-street parks ensure there's room for all your vehicles and toys. Built with durable, permanent materials, this is a home designed for peace of mind and low upkeep, giving you more time to enjoy everything this sought-after location has to offer.

Perfectly positioned within zoning for Thorrington Primary and Cashmere High School, this property ensures excellent educational opportunities. Outdoor lovers will appreciate the easy access to Bowenvale Reserve, popular mountain bike and hiking tracks, and

Shady Attia | 02102169996 | shady.attia@attiarealestate.com | [Attia Real Estate](#)

@realty Limited Licensed REA 2008

