



# FOR SALE

## SPACIOUS TWO BEDROOM APARTMENT WITH STUNNING VIEWS!

Undeniably the most sought-after floorplan within the 'Sundale' building, this expansive two-bedroom, two-bathroom apartment is guaranteed to captivate.

Featuring quality finishes throughout, the generous open-plan living and dining area effortlessly spills out onto an expansive North/East-facing balcony, where panoramic Broadwater and Ocean vistas await, while the master bedroom treats you to a second balcony revealing enchanting Hinterland views.

Thanks to its clever design, coastal breezes dance through this residence all day. Act fast, this will certainly not last long.

Features include:

- Situated on level 51 offering outstanding views of the Gold Coast
  - Breathtaking ocean vistas from the living/dining room and patio, showcasing Main Beach and the Broadwater
  - Luxurious master bedroom featuring a spacious walk-in robe, ensuite, and a private balcony with stunning views of the hinterland and Gold Coast skyline
  - Well-proportioned second bedroom with ample storage space provided by a double built-in robe
  - Stylish and contemporary kitchen equipped with high-quality stainless-steel appliances, including a dishwasher, gas stove
  - Expansive bathroom with an exquisite standalone bathtub
  - Convenient separate laundry area
  - Elevate your lifestyle in Southport's tallest residential tower
  - Boasting a plethora of desired conveniences like indoor and outdoor pools, a spa, sauna, and gym, this remarkable addition also hosts its very own shopping hub that houses a Woolworths, a medical centre, pharmacy, and a delightful assortment of restaurants and cafes.
- Conveniently located right at your doorstep, a light rail station awaits, while the Broadwater Parklands and Australia Fair are a mere leisurely stroll away.

Body Corp levies approx \$2200 per quarter  
Council rate approx \$3100 per year

2 BED | 2 BATH | 1 CAR

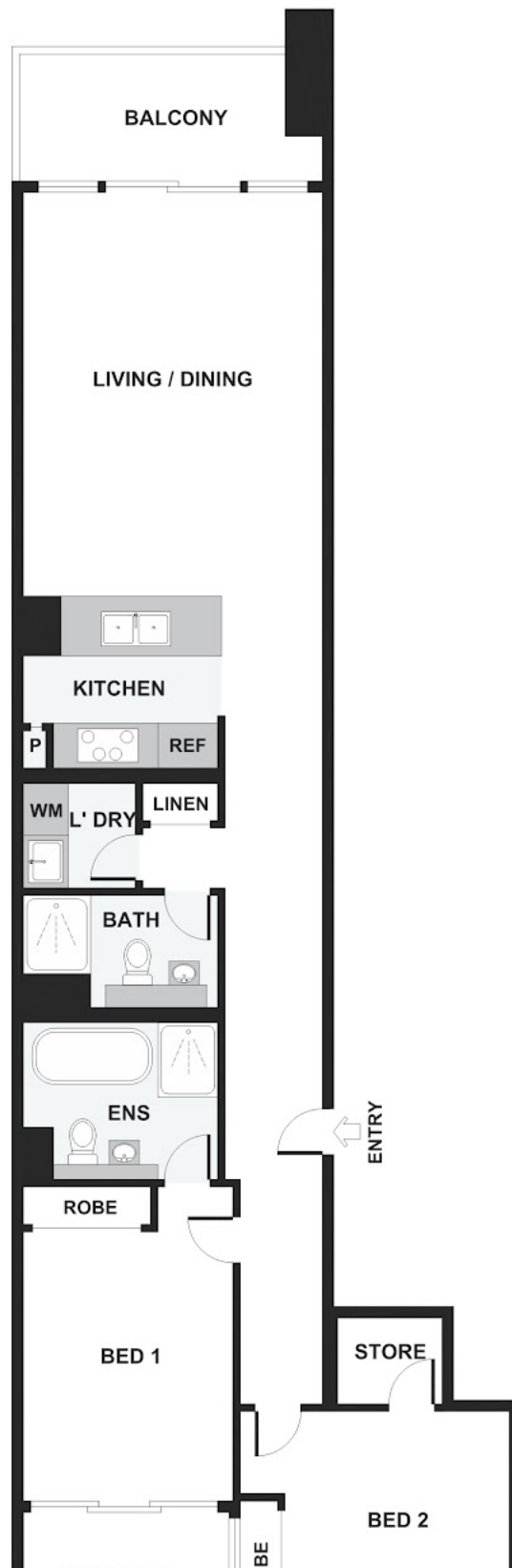
PRICE:  
CONTACT AGENT

OPEN FOR INSPECTION:  
N/A



**Clyde Lin**  
**0459388222**  
clyde@atrealty.com.au  
[www.atrealty.com.au](http://www.atrealty.com.au)

# 5111/2 Como Crescent, Southport



Disclaimer: Please note this floor plan is for marketing purposes and is to be used as a guide only. All dimensions are estimates only and may not be exact measurements.