

# 72 STRAWBERRY ROAD MUDGEERABA



## FOR SALE

### 3.3 ACRE BLOCK WITH BREATHTAKING VIEWS OF SURFERS SKYLINE AND VALLEY

This remarkable multi-level residence with an ideal North East aspect is set across three spacious floors, each offering its own unique charm and privacy. Situated on a 3.3 acre block in prestigious Strawberry Road, just minutes from the top private and public schools, beaches, shopping precincts, the M1 on the Gold Coast, it provides both convenience and exclusivity. With potential for dual living—complete with external access—this home offers flexibility for extended family or rental income.

Enjoy the tranquility of nature with wildlife at your doorstep, while the prized north-east aspect floods the home with natural light. The dedicated entertainment level features a luxurious steam room and full bathroom, perfect for unwinding or hosting guests. Additional highlights include solar panels and ample space for the whole family. The vision has been set—now it's time to finish the dream. The sellers began creating something truly special, but a change in circumstances means it's ready for you to make it your own.

Extra information and what has been done by the owners-

- ✓The owners have reclaimed over 1 acre of land to create the gardens and pool level adding multiple levels of rock walls and access to the pool and garden level
- ✓Planted a magical garden full of fruit trees, vegetables and herbs and chicken pen and some lawn area
- ✓Created the lower level ideal for entertainment all year round
- ✓New Heated pool - pool fencing to be completed
- ✓Installed solar panels
- ✓Renovated bathrooms and bedrooms

#### The Property - First Floor

The top floor is accessible directly from street level and occupies a commanding position above the Gold Coast, offering expansive views that extend beyond Labrador, encompassing both Cbus and Suncorp Stadiums, and reaching as far as Palm Beach. The property also features magnificent Valley views.

- Ducted air conditioned throughout

4 BED | 4 BATH | 2 CAR

#### PRICE:

Best Offers presented to The Seller

#### OPEN FOR INSPECTION:

Jun 28 at 11:30am - 12:00pm



**Audrey Goetz**

**0412148078**

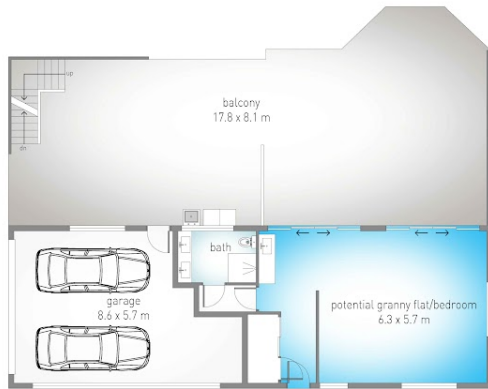
[audrey@atrealty.com.au](mailto:audrey@atrealty.com.au)

[www.atrealty.com.au](http://www.atrealty.com.au)

# 72 Strawberry Road, Mudgeeraba

3 4 2 1.35 ha/ 3.3 acres  
 internal: 277 m<sup>2</sup> | external: 248 m<sup>2</sup> | total: 525 m<sup>2</sup>

@realty  
 Audrey Goetz 0412 148 078



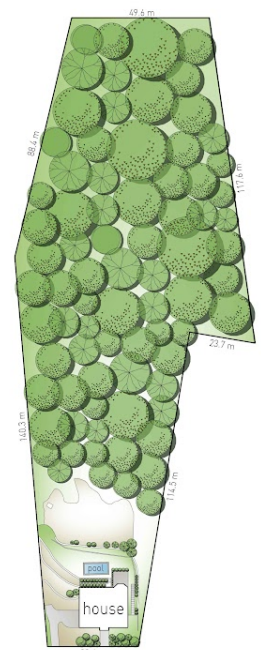
middle floor



lower floor



first floor



strawberry road

site plan



Dimensions are approximate. All information contained herein is gathered from sources we believe to be reliable. However we cannot guarantee its accuracy and interested persons should rely on their own enquiries.



Disclaimer: Please note this floor plan is for marketing purposes and is to be used as a guide only. All dimensions are estimates only and may not be exact measurements.