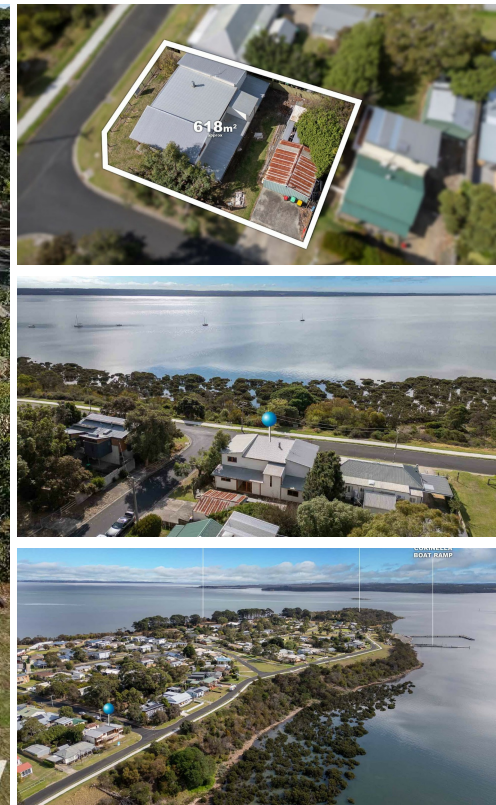


62 THE ESPLANADE CORINELLA



FOR SALE

62 THE ESPLANADE, CORINELLA, WHERE HISTORY LIVES ON WITH SPECTACULAR VIEWS

The Mystery Property – 62 The Esplanade, Corinella
A One-of-a-Kind Home Built from History with Spectacular Bay Views.

Welcome to the Mystery Property, a rare and extraordinary offering at 62 The Esplanade, Corinella — a home where craftsmanship, character, and spectacular coastal vistas come together.

Constructed almost entirely from reclaimed heritage timbers, this unique residence is a true celebration of Australia's history. Oversized Mountain Ash beams and monumental Redgum posts — some freestanding, others embedded into walls — form the stunning structure, reclaimed from World War II U.S. Army sheds built at Bandiana. The Americans cut the forests big, and that grandeur lives on here.

At the apex of the roof, a massive reclaimed bridge timber from Echuca commands attention, while rich, thick Redgum timbers formerly the floors of the old Finley Fire Shed — now grace the kitchen, laundry, and ensuite benchtops.

Inside, the home features:

A tiled sunken lounge set on a concrete slab, providing north-facing thermal mass.

Mixed hardwood flooring throughout.

A double-sided combustion heater that transforms into an open fire, perfect for cosy evenings.

A striking stone feature wall with custom lighting, complementing the stone-encased fireplace.

The heart of the home — the expansive kitchen — includes a large island bench with massive, accessible storage and a thoughtful cut-away section designed for safe cooking with children.

Comfort and Practicality:

Two split-system air-conditioning and heating units (one on each level).

Upstairs master retreat with ensuite (including a bidet) and a second living area. Wide range of lighting configurations to create various night time moods.

Fans throughout, including two dramatic fans in the soaring void above the kitchen and living space.

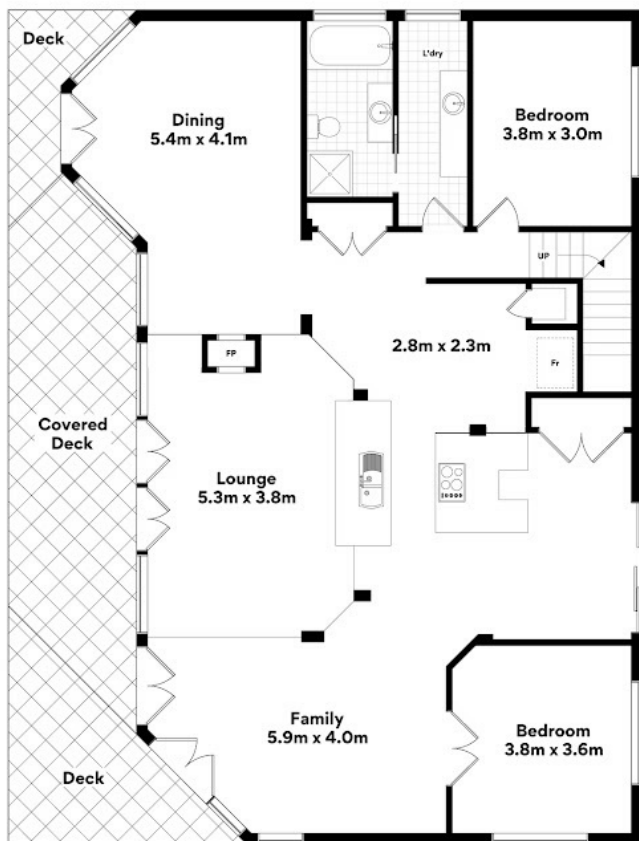
3 BED | 2 BATH | 0 CAR

PRICE:
\$850,000

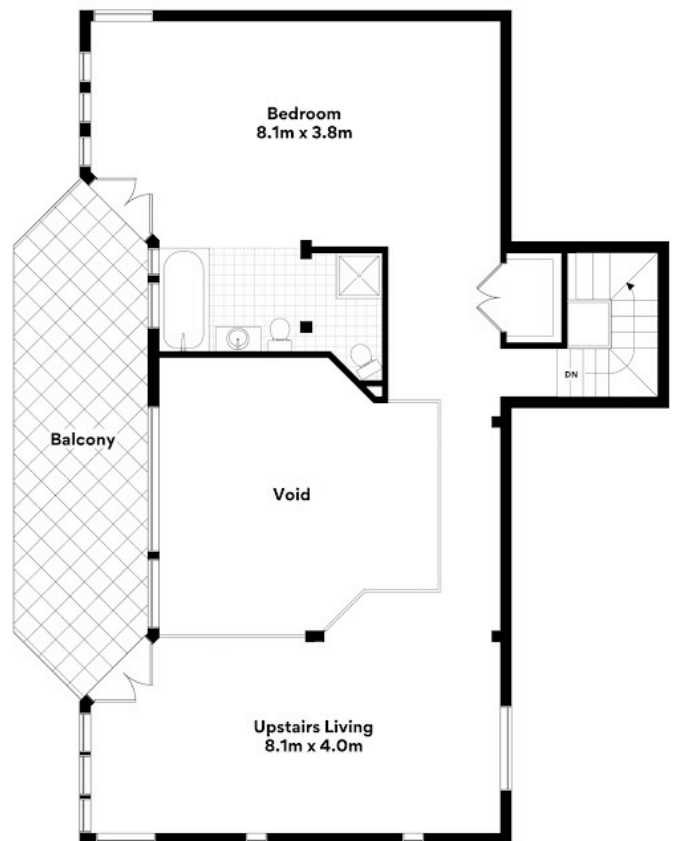
OPEN FOR INSPECTION:
N/A



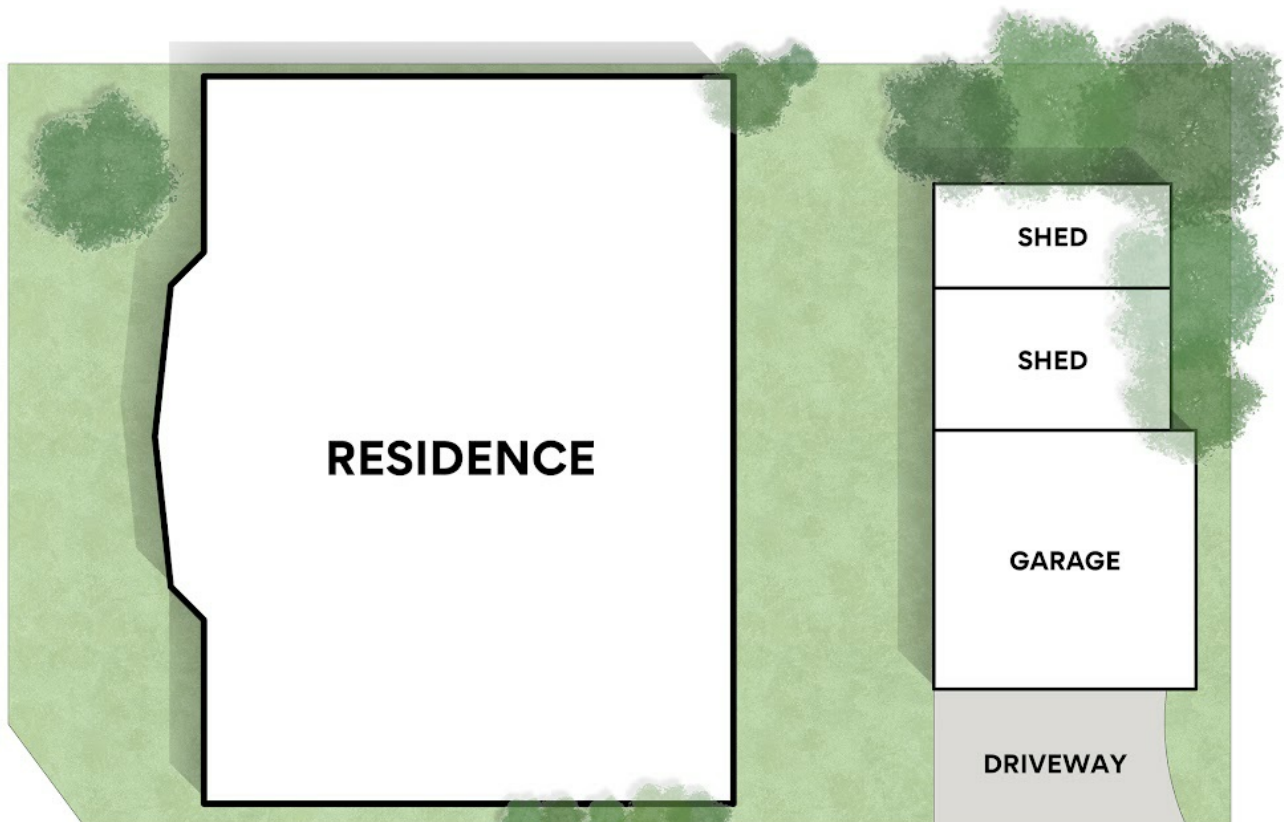
Tamara Leskie
0448809458
tamara.leskie@atrealty.com.au
www.atrealtypropertyexperts.com.au



LOWER LEVEL



UPPER LEVEL



Disclaimer: Please note this floor plan is for marketing purposes and is to be used as a guide only. All dimensions are estimates only and may not be exact measurements.

62 The Esplanade, Corinella

Tamara Leskie
0448809458

tamara.leskie@atrealty.com.au

www.atrealtypropertyexperts.com.au

Whilst every attempt has been made to ensure the accuracy of the floorplans contained here, measurements of doors, windows and rooms are approximate and no responsibility is accepted for any error, omission or mis-statement. These plans are for representation purposes only.

@realty