



FOR SALE

PERFECTLY POSITIONED APARTMENT

Welcome to Harbourside Apartments located in Mt Victoria, literally a stones throw from Courtenay Place.

Where convenience meets function, this two bedroom apartment offers generous open plan living, plus the added bonus of an internal balcony with large sliders to offer plenty of fresh air and light, due to its west facing aspect.

Inside, a hideaway laundry sits in the hallway, leading to a galley-style kitchen, dining area, and spacious lounge.

The primary bedroom is very spacious and warm with double glazed windows. Adjacent to the primary bathroom is a bedroom with built-in wardrobe.

With double glazed windows, and additional internal windows separating the internal balcony, the apartment is very quiet, you can barely hear the traffic.

Located on level two you will feel super connected to everything that is happening outside, with great proximity to New World, eateries, bars, movie theatres and some fantastic local restaurants.

Luxe List of Features:

- Secure car park included
- Five minute stroll to Oriental Bay beach
- Resilient earthquake rating
- Re-clad for peace of mind
- Transport links just across the road
- Enjoy late sun

For all property files please copy and paste this link into your URL: <https://bit.ly/3SgI5Wt>

2 BED | 1 BATH | 1 CAR

PRICE:

Enquiries Over \$625,000

OPEN FOR INSPECTION:

Aug 24 at 11:00am - 11:30am

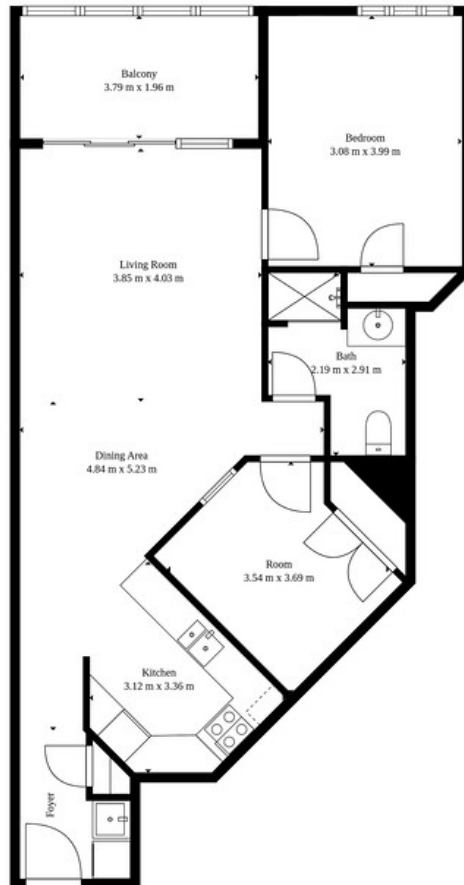


Mike Lovell

0274356007

mike@luxerealty.co.nz

www.luxerealty.co.nz



Measurements are indicative only

2B/5 Kent Terrace
Mount Victoria



Disclaimer: Please note this floor plan is for marketing purposes and is to be used as a guide only. All dimensions are estimates only and may not be exact measurements.