



FOR SALE

CALLING ALL RENOVATORS AND FLIPPERS – UNLOCK THE POTENTIAL IN BADGER CREEK!

INSPECTIONS BY APPOINTMENT ONLY - ENQUIRE NOW TO ARRANGE YOURS!

Set on a generous 656m² (approx.) allotment in the heart of scenic Badger Creek, this solid two-storey home is brimming with potential for those ready to roll up their sleeves and reap the rewards. Zoned for both Badger Creek Primary and Healesville High School, the location combines family-friendly appeal with solid long-term growth prospects.

The layout offers immediate value with three spacious upstairs bedrooms (two with built-in robes), including a master with an ensuite that has been stripped back to bare bones, ready for your vision. All bedrooms enjoy access to either the front or rear balcony with tranquil outlooks. Downstairs, a large lounge, laundry, open-plan dining and a retro kitchen provide a great starting point for a modern transformation, while original timber floors add character to build on.

Outside, the backyard offers a blank canvas and ample space for entertaining, play or future landscaping. A huge garage with own toilet, under-house storage room, and a wide frontage complete the picture.

Whether you're looking to renovate and flip, or create a family home with your own flair—this one's a no-brainer. Priced for opportunity. Ready for your ideas.

Don't miss this incredible opportunity - Contact us today for more information or to arrange an inspection!

Disclaimer: All information provided has been prepared with care; however, we make no guarantee as to the accuracy of the information. Prospective buyers are advised to make their own inquiries and seek independent legal and financial advice. We accept no responsibility for any errors, omissions, or discrepancies.

3 BED | 2 BATH | 1 CAR

PRICE:
\$520,000

OPEN FOR INSPECTION:
N/A

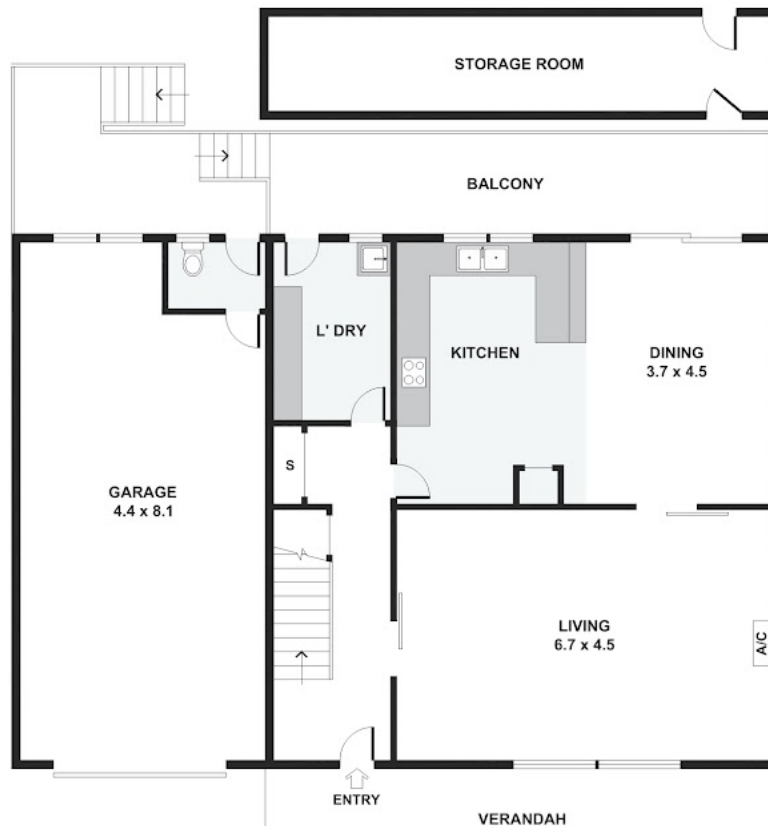


Scott Collins
0499005265
scottcollins@atrealty.com.au
scottcollins.com

481 Don Road, Badger Creek



FIRST FLOOR



Disclaimer: Please note this floor plan is for marketing purposes and is to be used as a guide only. All dimensions are estimates only and may not be exact measurements.