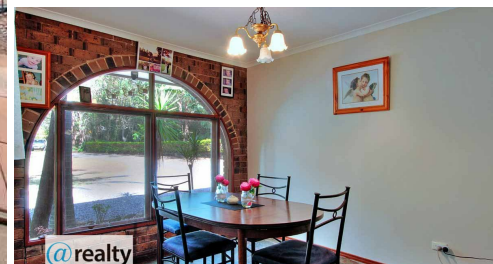
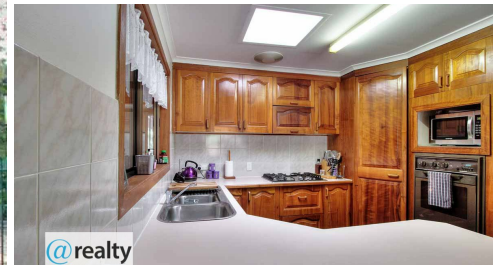


58-60 MALLEE DRV, TANAH MERAH, QLD, 4128



# FOR SALE

## BIG ON MALLEE, WITH PRIVACY & LEAFY SETTINGS!

This brick home is set well back from the road on 2,828m2 block with 4 bedrooms with built-in, ceiling fans. The 5th room is away to one side and can be used as workshop or storage area. This private home has 2 living areas, office, 2 car garages and a very inviting pool.

More benefits to this private & leafy home,

- Brick with metal roof,
- 4/5 Bedroom with built-ins and fans (except 5th)
- Ensuite and 2nd bathroom,
- Formal lounge with carpet and ceiling fans,
- 2nd living area with tiled floors & ceiling fan,
- Separate office,
- Large timber kitchen with plenty of cupboard space,
- Gas cooking and hot water,
- Covered outdoor area overlooking the pool,
- Room for sheds, caravans and trailers.
- Close to motorways and M1,
- close to public transport and major shopping centre,
- Currently rented \$470.00 per week,
- Pest & Building report is available for this home,

Please call Mark Perera for further information on this private home on 0417 199 875

4 BED | 2 BATH | 0 CAR

### PRICE:

Looking for Offers in the high \$500k

### OPEN FOR INSPECTION:

N/A

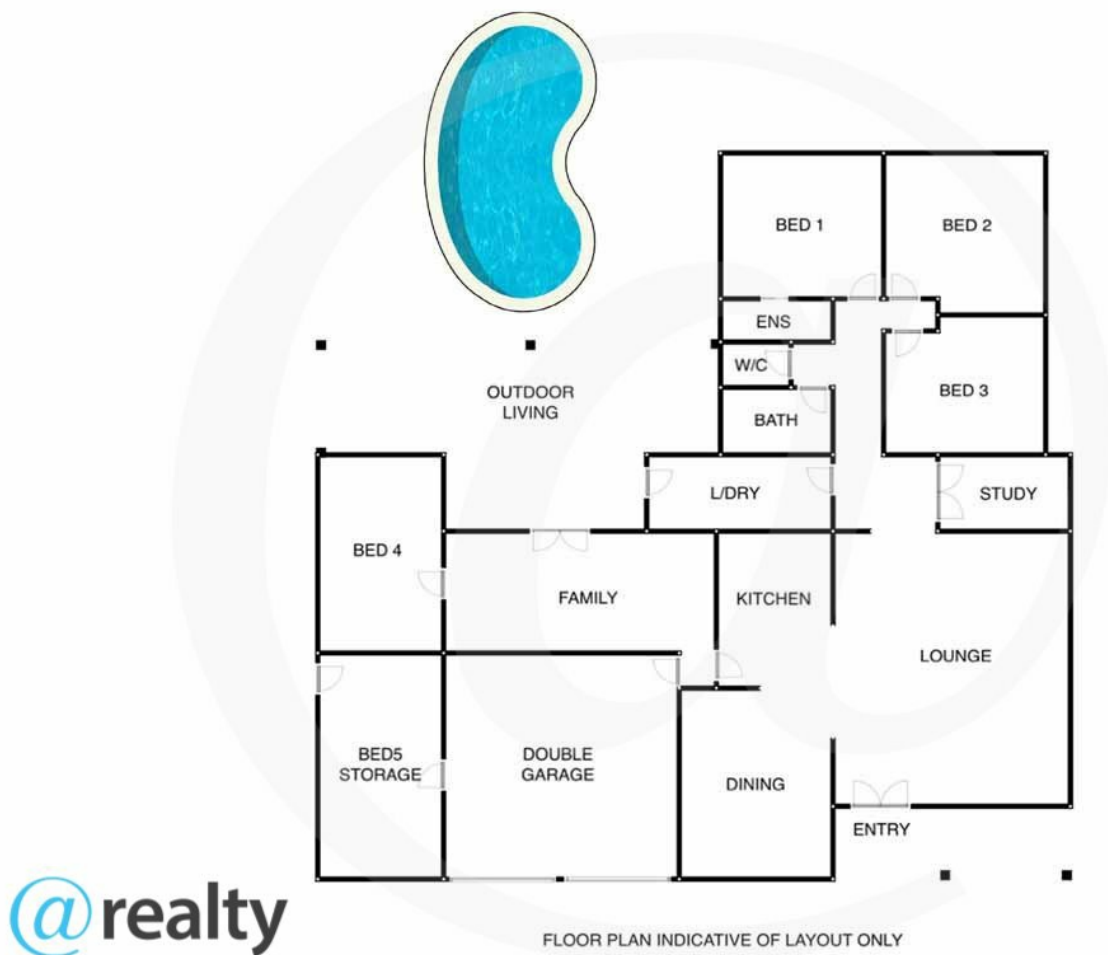


**Mark Perera**

**0417199875**

markperera@atrealty.com.au

[www.atrealty.com.au](http://www.atrealty.com.au)



Disclaimer: Please note this floor plan is for marketing purposes and is to be used as a guide only. All dimensions are estimates only and may not be exact measurements.